



**TranTank**<sup>®</sup>  
INTERNATIONAL

# 2025 PRODUCT CATALOGUE

VALID FROM JANUARY 2025



**TANKS** LIQUID TRANSPORT



**DIESEL** REFUELING TANKS



**FIELD** SPRAYER UNITS



**FIRE** FIGHTING EQUIPMENT



**TRAILED** WATER CARTS



**INDUSTRIAL** WATER CARTS



**TransTank<sup>®</sup>**  
INTERNATIONAL

#### **DISCLAIMER**

There may be information in our catalogue that contains typographical errors, inaccuracies, or omissions that may relate to product descriptions, specifications, pricing and other details. All weights, measurements and colours shown, are best approximations.

Trans Tank International (TTi) cannot guarantee and assumes no legal liability or responsibility for the accuracy or completeness of the information provided. The information contained in this catalogue is for general guidance only. TTi reserves the right to change, delete, or otherwise modify the information which is represented without any prior notice.



# WE DESIGN, DEVELOP AND MANUFACTURE LIQUID TRANSPORT **TANK SOLUTIONS HERE IN AUSTRALIA**

Built for the tough Australian landscape and exported across the world, we offer water cartage, weed spraying, diesel tank and fire fighting solutions for farmers and civil contractors.



## **25-YEAR TANK WARRANTY**

Reliable, dependable solutions you could still be using 25 years from now



## **250+ ACTIVE STOCKING DEALERS**

250+ Active Stocking Dealers  
Australia-Wide



## **LOCAL SERVICE & SUPPORT**

Friendly, helpful Australian support team when you need it for the life of your product



## **100% AUSTRALIAN MADE & OWNED**

Australian-owned and made for the tough Australian landscape



## **SAFEST TANKS IN MOTION**

Reduce your risk with the true liquid transport tank specialists



# WHO WE ARE



WHO

**WE ARE HERE TO  
SERVE HANDS-ON,  
DOWN TO EARTH PRACTICAL  
PEOPLE.**

Built in Australia, by Australians, for the  
tough Australian landscape







## PURPOSE

# TO HELP DEVELOP & PROTECT THE LAND.

—  
Helping you keep the weeds under control, your earthmoving equipment refueled, & fighting fire

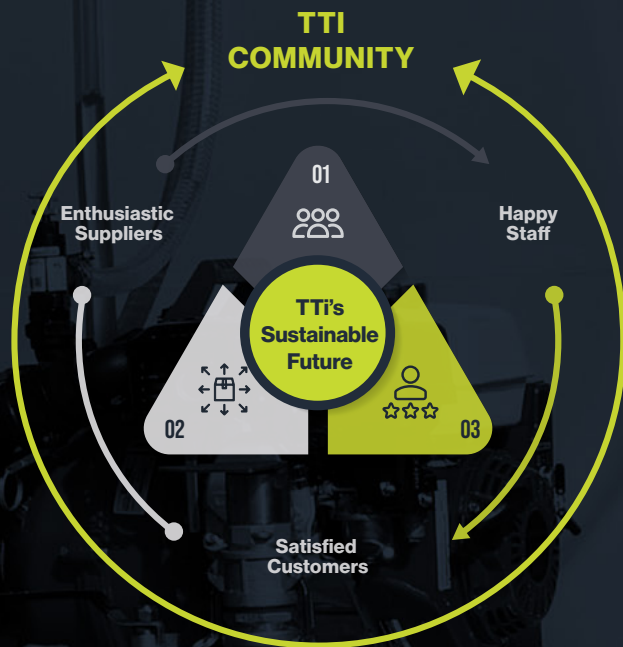


## CULTURE

# OUR CULTURE AND CAPABILITY EQUAL JUST RIGHT, FIRST TIME, EVERY TIME.

—  
Our CRISP values underpin everything we do. Care, Respect, Innovation, Sincerity & Passion





**NATHALIA**  
[HEAD OFFICE]



**NATHALIA**  
[FABRICATION]



**MELBOURNE**  
[WATER TRUCKS]

# THE WORLD'S MOST RELIABLE LIQUID TRANSPORT TANK SOLUTIONS

TTi, or Trans Tank International is respected as Australia's Leading Manufacturer of rotationally moulded poly tanks, and has been for over 25 years.



# WHO ARE WE

## WE PRIDE OURSELVES ON BEING:



### ENVIRONMENTALLY AWARE

- ✓ We generate enough solar power to run our entire factory
- ✓ We commit to recycle wherever possible & continually economise our processes



### COMMITTED TO THE HEALTH & SAFETY OF OUR PEOPLE

- ✓ We are passionate about OH&S and constantly strive for excellence
- ✓ We provide training & development for the personal enrichment of our staff

### TTI VALUES



CARE



RESPECT



INNOVATION



SINCERITY



PASSION



MOULDING



FABRICATION



ADMINISTRATION



ASSEMBLY



WAREHOUSE

# PRODUCT DIRECTORY

## TANKS

LIQUID TRANSPORT TANKS



AquaTrans™ AquaMove™	14
AquaDelivery™	20
TransLoc™	22
InterLoc™	23
SumpTrans™	24
Tank Accessories	30

## SPRAY

WEED SPRAYING EQUIPMENT



Inter™ Knapsack & Compression Sprayers	32
IK™ Industrial Sprayers	36
WeedMasta™ 16R	37
WeedControl™	38
WeedControl™	40
Strike™	42
ReelStrike™	43
OnDeck™	44



# PRODUCT DIRECTORY

OnDeck™ (Standard)	46
OnDeck™ (Compact)	48
OnDeck™ with SuperReel™	50
SpotPro™	52
SpotPro™ (Deluxe)	53
TopCrop™	54
SuperReel™ (Single)	56
SuperReel™ (Twin)	58
TrailPro™	60
TrailPro™ (Deluxe)	61
TrailPro™	62
GlidePath™	64
SuperTrail™	66
SilageMaster™	68
LinkOn™	70
Spray Accessories	74
Remco	75
12v Pumps	75
Spray Hose	80
SuperReel™	81
Compact™	88
Pinnacle™ 'Plus'	89

## DIESEL DIESEL REFUELING TANKS



DieselSergeant™	94
DieselMajor™	95
DieselCaptain™	96
DieselCadet™	100
DieselCadet™ with Pump	104
Diesel Refueling Trailers	106
DieselPatrol14™	107
DieselPatrol15™	108
Diesel Accessories	112
BluEmission™	116

## FIRE FIRE FIGHTING EQUIPMENT



StandBy10™	118
BackUp16™	118
FireCombat™	120
FireGuard™	120

FireBoss™	121
FireDefence™	122
FireAttack™ Deluxe	124
FireAttack™	124
AquaPath™	126
FirePatrol14™	130
FirePatrol15™	132
PantherPatrol™	136

## INDUSTRIAL CIVIL WATER CARTS



PolymerPro™	138
Water Trucks	140
Water Trucks (4x2)	142
Water Trucks (6x4)	143
AquaModule™ (Chassis-Mount)	144
FloodRite™ (Slip-On Water Carts)	146
Hooklift™ (Hooklift Water Carts)	150
xTreme™ (Pressure Washdown Trailer)	152
xTreme™ (Plus)	153

# WHAT'S NEW



See page 29

## SumpTrans™ Tanks

Available in 8,000L, 10,000L & 12,000L

- ◆ Shallow Tank Feet
- ◆ Large, Deep Suction Sump
- ◆ Heavy Duty Pump Plate
- ◆ Agitator Mount Provisions



See page 51

## OnDeck™ 100 - 150m SuperReel™

300L UTV Sprayer with Single/Twin Reel

- ◆ Single 100m or 150m 12v SuperReel™ Auto-rewind Reel
- ◆ Honda GX200 Engine
- ◆ Compact Design Suited for Kubota and LandBoss



See page 75

## Remco 12v Pumps

Professional 12v Spray Pumps

- ◆ High Flow Rate with Less amp Draw
- ◆ Longer Duty Cycle
- ◆ 2000 Hour Life Expectancy
- ◆ 12-Month Warranty



See page 81

## SuperReel™ 50m & 100m/150m

Auto-Rewind 12v Reel - New Enhanced Design

- ◆ Powerful Belt-Driven 12v Motor
- ◆ Geared Reduction for Maximum Torque and Power Efficiency
- ◆ Easy Bolt-Down Points with Tough Powder-Coated Finish



See page 70

## LinkOn™

3PL Sprayer

- ◆ Slotted Boom-Mount Brackets - for Easy Boom Height Adjustment
- ◆ New 'Compact' Boom Design - Reduced Stress on Boom and Sprayer
- ◆ Optional Side Step - for Easy Lid Access (600L - 1000L)



See page 136

## PolymerPro™ 1000L & 2000L

Polymer Application Trailer

- ◆ Reliable Honda GX200 engine & 75L/min Bertolini Pump
- ◆ Heavy duty 36m x 19mm Hose reel with twist type nozzle
- ◆ 100L Tank Flush System





# TANKS

LIQUID  
TRANSPORT



# WHAT MAKES TTI'S TANKS UNIQUE?



Over 20 years specialising in the manufacture of quality water cartage tanks

TTi has over 20 years specialising in the manufacture of quality water cartage tanks. We do not dilute our focus by producing storage tanks and other roto-moulded products.

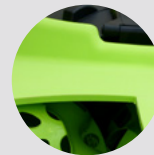
Did you know the DNA of every TTI tank is recorded? This combined with rigorous quality checks including ultrasound thickness testing and laboratory impact testing ensures that our clients are getting the very best available tanks on the Australian market, giving you peace of mind. Our unmatched tooling engineering is reflected in every moulded TTI Tank.

## WATER CARTAGE TANKS

Tank Sizes:  
20 to 17,000 Litres



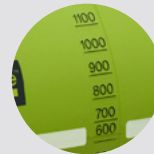
### KEY FEATURES



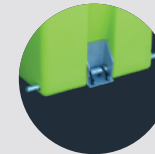
Extra thick tank wall structure with a load capacity of up to an enormous 1.3 Specific Gravity on all AquaTrans™



Exclusive, specially developed and formulated polyethylene powder incorporating the latest technology



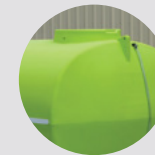
Easy-to-read calibration on side wall of tank for quick measurement of contents (when sight level tube is fitted)



Specifically designed footings to enable easy mounting to any tray surface - mounting pins included.



Factory-fitted outlet with every tank



UV stabilised to withstand the elements; All tanks are cooked to temperature, not time

Suitable for



Potable Water



Molasses



Chemicals



Virtually Any Other Liquid!

# GET ANY TANK IN YOUR CORPORATE COLOUR



## TRANSLUCENT

See the liquid level through the tank wall!



## OPAQUE

Zero light penetration into tank

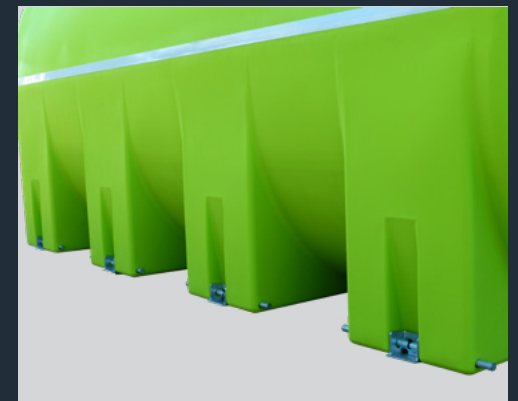
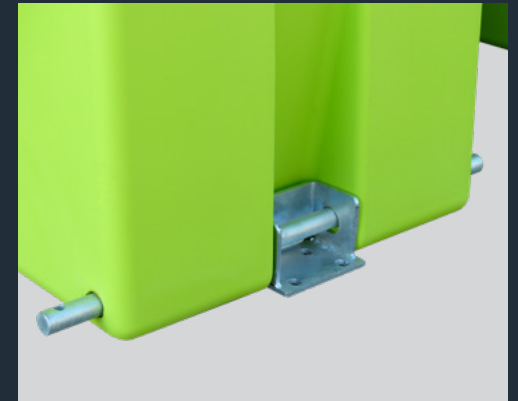


5% Colour Change Surcharge Applies

Note: Actual colours may vary slightly

# SUPPLIED WITH PINS & WEDGES

FOR EFFECTIVE MOUNTING



\*Note: Wedges supplied for tanks 8,000L+





## WATER & FOAM TANKS

- UV stabilised for years of use
- Moulded inserts for mounting
- Tanks can be drilled and tapped to accept fittings

### WATER

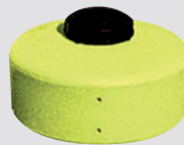


\$199\*

10 Litres

220mm(ø) x 460mm(H)

SKU: PTZV00010SG



\$266\*

35 Litres

450mm(ø) x 400mm(H)

SKU: PTZV00025SG



\$392\*

50 Litres

450mm(ø) x 600mm(H)

SKU: PTZV00050SG



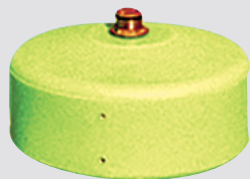
\$600\*

100 Litres

450mm(ø) x 950mm(H)

SKU: PTZV00100SG

### FOAM



\$393\*

35 Litres

450mm(ø) x 400mm(H)

SKU: PTZB00025SG



\$525\*

50 Litres

450mm(ø) x 600mm(H)

SKU: PTZB00050SG



\$715\*

100 Litres

450mm(ø) x 950mm(H)

SKU: PTZB00100SG

450mm lid  
option available on  
some models



# AQUATRANS™ / AQUAMOVE™

Water Cartage Tanks with 15 or 25-Year Warranty



SCAN TO SEE THIS PRODUCT IN ACTION!



AquaTrans™ 25-Year Warranty

**\$ 239\*** **20** Litres

590 x 320 x 280mm (LWH)  
 ø100 Lid & Seal 3/4"  
 Poly Drain Bung & Seal

SKU: PTC00020SG



AquaTrans™ 25-Year Warranty

**\$ 393\*** **50** Litres

800 x 430 x 390mm (LWH)  
 ø150 Lid & Seal  
 3/4" Poly Drain Bung & Seal

SKU: PTC00050SG



AquaTrans™ 25-Year Warranty

**\$ 590\*** **100** Litres

900 x 450 x 475mm (LWH)  
 ø150 Lid & Seal  
 3/4" Poly Drain Bung & Seal

SKU: PTC00100SG



AquaTrans™ 25-Year Warranty

**\$ 660\*** **200** Litres

1000 x 650 x 600mm (LWH)  
 ø150 Lid & Seal  
 3/4" Poly Drain Bung & Seal

SKU: PTC00200SG



AquaTrans™ with 25-Year Warranty

**\$ 675\*** **220** Litres

925 x 710 x 510mm (LWH)  
 ø255 Lid Assembly  
 3/4" Poly Drain Bung & Seal

SKU: PTC00220SG

Steel Skid-Frame  
 SKU: ASF00220

**\$ 675\***

Top-Mount Steel Pump Plate  
 SKU: SSF001

**\$ 295\***



AquaTrans™ with 25-Year Warranty

**\$ 1,200\*** **400** Litres

1620 x 710 x 510mm (LWH)  
 ø255 Lid Assembly  
 3/4" Poly Drain Bung & Seal

SKU: PTC00400ASG

Steel Skid-Frame  
 SKU: ASF00400A

**\$ 800\***

Top-Mount Steel Pump Plate  
 SKU: SSF001

**\$ 295\***

What's the Difference?

# AquaTrans™ AquaMove™

## AquaTrans™

There is nothing much in the way of a rotationally moulded polyethylene water cartage tank that compares with the TTi AquaTrans™ tank range.

A really heavy-duty tank with a 25-year warranty is just part of the deal. The AquaTrans™ is a premium product and is in a league of its own. This is the bees' knees!

## AquaMove™

Without any compromise, the AquaMove™ range has been introduced to be a player in the price sensitive end of the market.

With a slightly lighter design than the AquaTrans™ and a 15-year warranty, this is the everyday range.

## Water Cartage Tanks



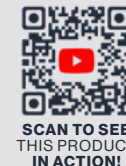
SCAN TO SEE  
THIS PRODUCT  
IN ACTION!





# AQUATRANS™ / AQUAMOVE™

Water Cartage Tanks with 15 or 25-Year Warranty



SCAN TO SEE THIS PRODUCT IN ACTION!



**500 Litres**

**AquaTrans™ 25-Year Warranty**  
SKU: PTC00500SG

**\$1,320\***

1250 x 1070 x 580mm (LWH); Mounting Pins Provided; ø255 Lid, Rim, & Seal Assy; 1½" MBSP Fitting-Poly (fitted)



**600 Litres**

**AquaTrans™ 25-Year Warranty**  
SKU: PTC00600SG

**\$1,385\***

1250 x 1070 x 740mm (LWH); Mounting Pins Provided; ø455 Lid, Rim, & Seal Assy; 1½" MBSP Fitting-Poly (fitted)

★ **LiquidLocker™ 16pcs** **\$208\***



**800 Litres**

**AquaTrans™ 25-Year Warranty**  
SKU: PTC00800SG

**\$1,680\***

1430 x 1220 x 670mm (LWH); Mounting Pins Provided; ø455 Lid, Rim, & Seal Assy; 1½" MBSP Fitting-Poly (fitted)

★ **LiquidLocker™ 17pcs** **\$221\***



**1,000 Litres**

<b>AquaTrans™ 25-Year Warranty</b> SKU: PTC01000SG	<b>AquaMove™ 15-Year Warranty</b> SKU: STC01000SG
---	--

**\$1,920\***

**\$1,780\***

1430 x 1220 x 835mm (LWH); Mounting Pins Provided; ø455 Lid, Rim, & Seal Assy; 1½" MBSP Fitting-Poly (fitted)

★ **LiquidLocker™ 24pcs** **\$312\***



**1,200 Litres**

**AquaTrans™ 25-Year Warranty**  
SKU: PTC01200SG

**\$2,120\***

1720 x 1230 x 840mm (LWH); Mounting Pins Provided; ø455 Lid, Rim, & Seal Assy; 1½" MBSP Fitting-Poly (fitted)

★ **LiquidLocker™ 29pcs** **\$377\***



**1,500 Litres**

<b>AquaTrans™ 25-Year Warranty</b> SKU: PTC01500SG	<b>AquaMove™ 15-Year Warranty</b> SKU: STC01500SG
---	--

**\$2,470\***

**\$2,305\***

1720 x 1230 x 1000mm (LWH); Mounting Pins Provided; ø455 Lid, Rim, & Seal Assy; 1½" MBSP Fitting-Poly (fitted)

★ **LiquidLocker™ 40pcs** **\$520\***

# AQUATRANS™ / AQUAMOVE™

Water Cartage Tanks with 15 or 25-Year Warranty



**2,000 Litres**

**AquaTrans™ 25-Year Warranty**  
SKU: PTC02000SG

**AquaMove™ 15-Year Warranty**  
SKU: STC02000SG

**\$3,430\***

**\$3,235\***

LWH: 2150 x 1410 x 870mm; Mounting Pins Provided;  
ø455 Lid, Rim, & Seal Assy; 2" MBSP Fitting-Poly (fitted)

- ★ LiquidLocker™ 55pcs **\$715\***
- ★ Steel Mounting Frame **\$2,700\***



**2,400 Litres**

**AquaTrans™ 25-Year Warranty**  
SKU: PTC02400SG

**\$3,905\***

LWH: 2150 x 1410 x 1140mm; Mounting Pins Provided;  
ø455 Lid, Rim, & Seal Assy; 2" MBSP Fitting-Poly (fitted)

- ★ LiquidLocker™ 66pcs **\$858\***
- ★ Steel Mounting Frame **\$2,700\***



**3,000 Litres**

**AquaTrans™ 25-Year Warranty**  
SKU: PTC03000SG

**AquaMove™ 15-Year Warranty**  
SKU: STC03000SG

**\$5,110\***

**\$4,445\***

LWH: 2430 x 1540 x 1200mm; Mounting Pins Provided;  
ø455 Lid, Rim, & Seal Assy; 2" MBSP Fitting-Poly (fitted)

- ★ LiquidLocker™ 85pcs **\$1,105\***
- ★ Steel Mounting Frame **\$4,205\***



**4,000 Litres**

**AquaTrans™ 25-Year Warranty**  
SKU: PTC04000SG

**AquaMove™ 15-Year Warranty**  
SKU: STC04000SG

**\$5,980\***

**\$5,660\***

LWH: 2430 x 1540 x 1450mm; Mounting Pins Provided;  
ø455 Lid, Rim, & Seal Assy; 2" MBSP Fitting-Poly (fitted)

- ★ LiquidLocker™ 110pcs **\$1,430\***
- ★ Steel Mounting Frame **\$4,205\***



**5,000 Litres**

**AquaTrans™ 25-Year Warranty**  
SKU: PTC05000SG

**AquaMove™ 15-Year Warranty**  
SKU: STC05000SG

**\$7,170\***

**\$6,430\***

LWH: 2760 x 2000 x 1400mm; Mounting Pins Provided;  
ø455 Lid, Rim, & Seal Assy; 2" MBSP Fitting-Poly (fitted)

- ★ LiquidLocker™ 138pcs **\$1,794\***
- ★ Steel Mounting Frame **\$5,525\***



**6,000 Litres**

**AquaTrans™ 25-Year Warranty**  
SKU: PTC06000SG

**\$8,405\***

LWH: 2760 x 2000 x 1540mm; Mounting Pins Provided;  
ø455 Lid, Rim, & Seal Assy; 2" MBSP Fitting-Poly (fitted)

- ★ LiquidLocker™ 165pcs **\$2,145\***
- ★ Steel Mounting Frame **\$5,525\***





# AQUATRANS™ / AQUAMOVE™

Water Cartage Tanks with 15 or 25-Year Warranty



SCAN TO SEE  
THIS PRODUCT  
IN ACTION!



**13,000** Litres

**AquaTrans™ 25-Year Warranty**

SKU: PTC13000ASG

**\$16,765\***

LWH: 4310 x 2350 x 1795mm; Pins and Wedges Supplied;  
2 x ø455 Lid, Rim, & Seal Assy; 3" MBSP Fitting-Brass

★ **LiquidLocker™ 385pcs** **\$5,005\***

★ **Steel Mounting Frame** **\$7,785\***



**15,000** Litres

**AquaTrans™ 25-Year Warranty**

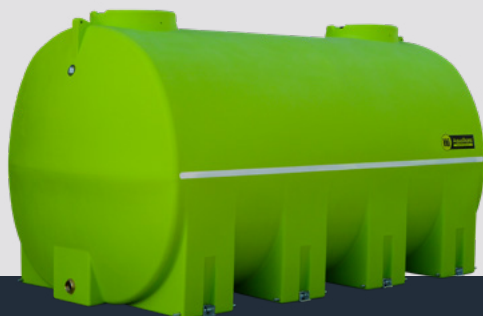
SKU: PTC15000SG

**\$19,950\***

LWH: 4310 x 2350 x 2040mm; Pins and Wedges Supplied;  
2 x ø455 Lid, Rim, & Seal Assy; 3" MBSP Fitting-Brass

★ **LiquidLocker™ 445pcs** **\$5,785\***

★ **Steel Mounting Frame** **\$7,785\***



**17,000** Litres

**AquaTrans™ 25-Year Warranty**

SKU: PTC17000SG

**\$22,580\***

LWH: 4310 x 2350 x 2395mm; Pins and Wedges Supplied;  
2 x ø455 Lid, Rim, & Seal Assy; 3" MBSP Fitting-Brass

★ **LiquidLocker™ 505pcs** **\$6,565\***

★ **Steel Mounting Frame** **\$7,785\***



**LOW-PROFILE DESIGN**

**FOR MAXIMUM VEHICLE STABILITY**

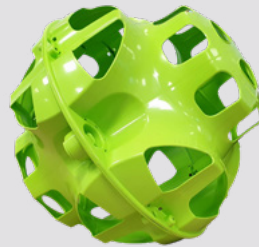
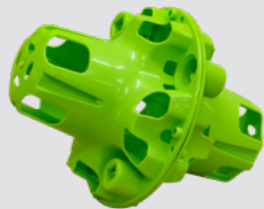




**LiquidLocker™**  
tti BAFFLE SYSTEM

## The Locker that Stops The Slosh!

- ✓ **Complies with load restraint** guide performance standards
- ✓ **Suitable for use with all tanks** - poly, steel, fibreglass, aluminium, etc.
- ✓ **LiquidLocker™ baffles** can be used with water, diesel and other liquids
- ✓ **Simple to install** LiquidLocker™ baffles are supplied in two halves



**LiquidLocker™**  
Anti-Surge Baffling Safety System  
(Supply Only)

**\$ 8\***

**Ø195mm**

**1 Ball per 5.8 Litres (1:6)**  
SKU: LLB195

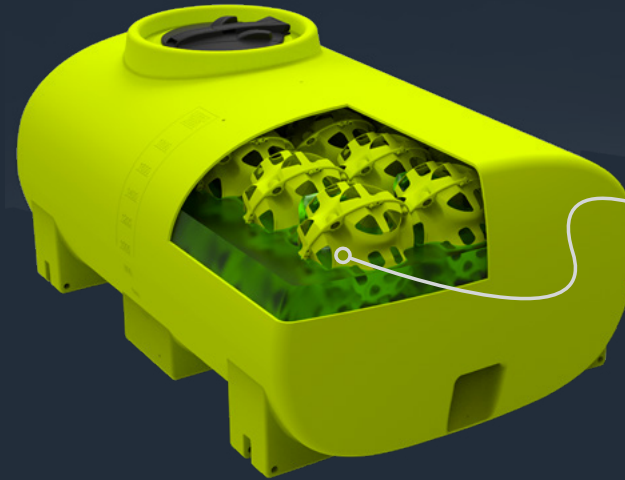
**LiquidLocker™**  
Anti-Surge Baffling Safety System  
(Supply Only)

**\$ 11\***

**Ø380mm**

**1 Ball per 33 Litres (1:33)**  
SKU: LLB380

## LiquidLocker Testing & Demonstration Results:



IT TAKES UP JUST  
**1.7%**  
OF YOUR TANKS  
TOTAL VOLUME!

**100%**  
ELIMINATION OF  
LIQUID SURGE

**80%**  
IMPROVED CORNERING &  
MANEUVERABILITY

**40%**  
SHORTER BRAKING  
DISTANCE

**50%**  
VEHICLE WEAR AND  
TEAR REDUCTION

\*Results may vary depending on tank size, vehicle & road conditions



SCAN TO SEE  
VIDEO  
DEMONSTRATION!

# AquaDelivery™

Bulk Water Delivery with Honda GX200 and 3" Water Delivery Pump

- ✓ Heavy-duty water cartage tank on forkable steel frame
- ✓ Honda GX200 (Electric Start) Motor with QP303 1000L/min Transfer Pump
- ✓ Lockable Toolbox with 2 x 10m Lengths of Certified Potable Food Grade Layflat Hose
- ✓ Hydrant Filler Lid with Spring non-return valve

## Bulk Water Delivery Unit



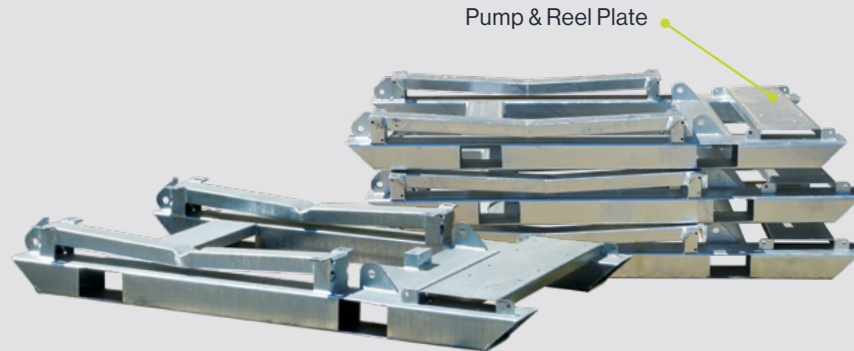
CODE	CAPACITY (LITRES)	RRP*(\$)
PWD05000L	<b>5,000</b> Litres	<b>\$ 20,325*</b>
PWD06000L	<b>6,000</b> Litres	<b>\$ 21,470*</b>
PWD07000L	<b>7,000</b> Litres	<b>\$ 24,470*</b>
PWD08000AL	<b>8,000</b> Litres	<b>\$ 25,640*</b>
PWD10000ALSG	<b>10,000</b> Litres	<b>\$ 27,760*</b>

CODE	CAPACITY (LITRES)	RRP*(\$)
PWD12000L	<b>12,000</b> Litres	<b>\$ 29,585*</b>
PWD13000L	<b>13,000</b> Litres	<b>\$ 32,015*</b>
PWD13000AL	<b>13,000</b> Litres	<b>\$ 32,015*</b>
PWD15000L	<b>15,000</b> Litres	<b>\$ 34,670*</b>
PWD17000L	<b>17,000</b> Litres	<b>\$ 37,010*</b>



# FRAMES

## Forkliftable Tank Skids



### To Suit Tanks from 500L to 1,500L

Simple tank to frame SureFit mounting system

TTi's steel frames are over engineered and hot dip galvanized for long lasting protection

Frames standard with forklift pockets from all four sides

SKU	DESCRIPTION	KG	L X W (MM)	RRP* (\$)
ASFCA00500	Steel Frame for <b>500L &amp; 600L</b> SumpTrans, includes forklift tine pockets on all sides	37	1630 x 1010	<b>\$2,610</b>
ASFCA00800	Steel Frame for <b>800L &amp; 1000L</b> SumpTrans, includes forklift tine pockets on all sides	53	1780 x 1110	<b>\$2,820</b>
ASFCA01200	Steel Frame for <b>1200L &amp; 1500L</b> SumpTrans, includes forklift tine pockets on all sides	72	1780 x 1344	<b>\$2,990</b>

\*Disclaimer: Check compatibility with your forklift width between tynes

### To Suit Tanks from 2,000L to 17,000L

Forkliftable for easy lift on, lift off convenience

Simple tank to frame SureFit mounting system

TTi's steel frames are over engineered and hot dip galvanized for long lasting protection

SKU	DESCRIPTION	KG	L X W (MM)	RRP* (\$)
ASFC02000	Steel Frame for <b>2000L &amp; 2400L</b> AquaTrans™	190	2910 x 1410	<b>\$2,700</b>
ASFC03000	Steel Frame for <b>3000L &amp; 4000L</b> AquaTrans™	218	3020 x 1355	<b>\$4,205</b>
ASFC05000	Steel Frame for <b>5000L &amp; 6000L</b> AquaTrans™	302	3500 x 1820	<b>\$5,525</b>
ASFC07000	Steel Frame for <b>7000L, 10000L &amp; 13000L</b> AquaTrans™	410	4100 x 2200	<b>\$6,940</b>
ASFCA08000	Steel Frame for 8000L, <b>10000L &amp; 12000L</b> Tipper AquaTrans	428	4210 x 2000	<b>\$6,940</b>
ASFC13000	Steel Frame for <b>13000L, 15000L &amp; 17000L</b> AquaTrans™	480	5300 x 2330	<b>\$7,785</b>

\*Disclaimer: Check compatibility with your forklift width between tynes

# TransLoc™

Heavy Duty Modular Water Cartage Tanks

## Heavy-Duty

Modular Water Cartage Tanks



- ✓ **Expandable** Capacity
- ✓ Modules can be plumbed to **drain independently** or **together!**
- ✓ **Low-Profile** Design
- ✓ Improved **Safety**
- ✓ **3,000L Modules**



Free-standing design allows for mounting to flat deck truck/trailer. Unique 2 x 6" connections between modules for even filling/draining.

Fully baffled every 3,000 Litres to minimise surge (optional LiquidLocker™ baffles). Low profile design for improved safety.





# InterLoc™

Fully-Drainable Chemical Tanks

Fully-Drainable

Modular Tank System



- ✓ Needing to **cart different chemicals** in one load?
- ✓ Standard with **Steel-Mounted Frame**
- ✓ Modules can be plumbed to **drain independently or together!**
- ✓ Fully **Baffled** (Every 2500 litres)

Needing to cart different chemicals in one load?  
Modules can be plumbed to drain independently  
or together!

Fully baffled every 2,500 Litres to minimise surge (optional LiquidLocker™ baffles). Low profile design for improved safety.

\*GST included | Freight Rates Apply





# SumpTrans™

Fully-Drainable Chemical Tanks



**TTi's SumpTrans™ Tank use specially blended polyethylene to handle the broadest range of liquids possible from plain water to the harshest chemicals – ask for a copy of our compatibility chart!**

TTi's SumpTrans™ tanks have excellent impact resistant qualities and impervious to some of the most aggressive chemicals. SumpTrans™ incorporate the latest technology to easily handle any work environment.

## Fully-Drainable Chemical Tanks



SCAN TO SEE  
THIS PRODUCT  
IN ACTION!



## KEY FEATURES



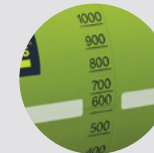
Manufactured from chemical resistant, UV stabilised polyethylene



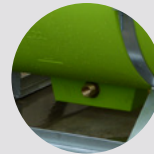
Large tank opening for fast, easy filling. Sealed with 455mm lid with labyrinth breather (600L+)



Easy fill, no spill containment lip on all spray tanks above 500L



Easy to read calibrations for measurement of contents (when sight level tube fitted on tank)



Fully draining sump with smooth interior and enables complete drainage and decontamination of tank



Available with robust hot-dip galvanised steel mounting frame for correct tank support and ease of mounting



Basket filter supplied with tanks 200 Litres and larger

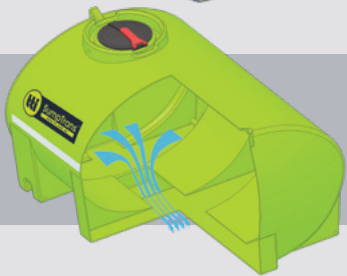


SureFit™ safe and secure mounting pin system





SCAN TO SEE  
THIS PRODUCT  
IN ACTION!

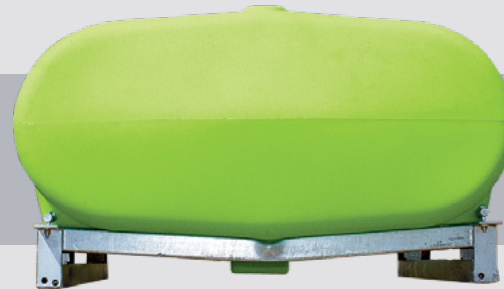


### CUTAWAY

Shows Fully Draining  
Tank Floor

### END VIEW

Shows 'V' Frame  
Supporting Tank



### SUITABLE FOR:



POTABLE WATER



MOLASSES



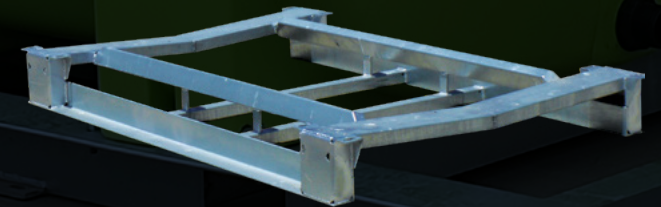
CHEMICALS



VIRTUALLY ANY OTHER LIQUID!\*



## TANK FRAMES



All spray tanks require a steel mounting support frame to give sump clearance

TTi's steel frames are over engineered and hot dip galvanized for long lasting protection.

# SUMPTRANS™

Fully-Drainable Chemical Tanks



SCAN TO SEE  
THIS PRODUCT  
IN ACTION!



## 100 Litres

Tank Only	with Frame
815 x 450 x 595mm (LWH) SKU: PTSS00100SG	815 x 450 x 600mm (LWH) SKU: PTSS00100KSG
<b>\$560*</b>	<b>\$955*</b>

ø150 Lid Assembly Complete; Pair of mounting straps; 1" MBSP Fitting-Poly; Skid Frame



## 200 Litres

Tank Only	with Frame
940 x 600 x 750mm (LWH) SKU: PTSS00200SG	940 x 600 x 760mm (LWH) SKU: PTSS00200KSG
<b>\$820*</b>	<b>\$1,135*</b>

ø255 Filter Basket; ø255 Lid Assembly Complete; 1½" MBSP Fitting-Poly; Straps Only (pair); Skid Frame



## 200 Litres (Low Profile)

Tank Only	with Frame
960 x 690 x 550mm (LWH) SKU: PTSP00200SG	1085 x 700 x 600mm (LWH) SKU: PTSP00200KSG
<b>\$835*</b>	<b>\$1,105*</b>

ø255 Filter Basket; ø255 Lid Assembly Complete; ¾" MBSP Fitting-Poly; Pump Compartment Cover; Skid Frame



## 300 Litres

Tank Only	with Frame
1270 x 615 x 730mm (LWH) SKU: PTSS00300SG	1270 x 615 x 750mm (LWH) SKU: PTSS00300KSG
<b>\$1,015*</b>	<b>\$1,380*</b>

ø255 Filter Basket; ø255 Lid Assembly Complete; 1½" MBSP Fitting-Poly; Straps Only (pair); Skid Frame



## 300 Litres

Tank Only	with Frame
940 x 600 x 950mm (LWH) SKU: PTSS00300ASG	940 x 615 x 965mm (LWH) SKU: PTSS00300AKSG
<b>\$1,015*</b>	<b>\$1,380*</b>

ø255 Filter Basket; ø255 Lid Assembly Complete; 1½" MBSP Fitting-Poly; Straps Only (pair); Skid Frame



## 400 Litres (Low Profile)

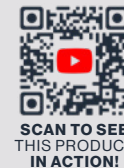
Tank Only	with Frame
1145 x 850 x 680mm (LWH) SKU: PTSP00400SG	1230 x 850 x 710mm (LWH) SKU: PTSP00400KSG
<b>\$1,165*</b>	<b>\$1,905*</b>

ø255 Filter Basket; ø255 Lid Assembly Complete; Pump compartment cover; ¾" MBSP Fitting-Poly; 4x8x100mm BSW HED HD Bolt; 8 x 8mm washers, 4 x 8mm; nyloc nuts; Skid Frame



# SUMPTRANS™

Fully-Drainable Chemical Tanks



SCAN TO SEE THIS PRODUCT IN ACTION!



**400 Litres**

<b>Tank Only</b> 890 x 820 x 960mm (LWH) SKU: PTSS00400SG	<b>with Frame</b> 890 x 820 x 975mm (LWH) SKU: PTSS00400KSG
<b>\$1,175*</b>	<b>\$1,925*</b>

ø255 Lid Assembly Complete; ø255 Filter Basket; 1½" MBSP Fitting-Poly; Straps Only (pair); Skid Frame



**500 Litres**

<b>Tank Only</b> 1250 x 1070 x 590mm (LWH) SKU: PTSP00500SG	<b>with Frame</b> 1250 x 1070 x 630mm (LWH) SKU: PTSP00500KSG
<b>\$1,315*</b>	<b>\$2,095*</b>

ø255 Lid Assembly Complete; ø255 Filter Basket; 1½" MBSP Fitting-Poly; 4 Pins 18 x 200; Skid Frame



**600 Litres**

<b>Tank Only</b> 1200 x 840 x 970mm (LWH) SKU: PTSS00600SG	<b>with Frame</b> 1200 x 840 x 1000mm (LWH) SKU: PTSS00600KSG
<b>\$1,325*</b>	<b>\$2,085*</b>

ø255 Lid Assembly Complete; ø255 Filter Basket; 1½" MBSP Fitting-Poly; Straps Only (pair); Skid Frame



**600 Litres**

<b>Tank Only</b> 1250 x 1070 x 750mm (LWH) SKU: PTSP00600SG	<b>with Frame</b> 1250 x 1070 x 790mm (LWH) SKU: PTSP00600KSG
<b>\$1,435*</b>	<b>\$2,300*</b>

ø455 Lid Assembly Complete; ø455 Filter Basket; 1½" MBSP Fitting-Poly; 4 Pins 18 x 200; Skid Frame



**800 Litres**

<b>Tank Only</b> 1430 x 1220 x 770mm (LWH) SKU: PTSP00800SG	<b>with Frame</b> 1430 x 1220 x 800mm (LWH) SKU: PTSP00800KSG
<b>\$1,690*</b>	<b>\$2,790*</b>

ø455 Lid, Rim, & Seal Assy; ø455 Filter Basket; 1½" MBSP Fitting-Poly; 4 Pins 18 x 200; Skid Frame



**1,000 Litres**

<b>Tank Only</b> 1430 x 1220 x 940mm (LWH) SKU: PTSP01000SG	<b>with Frame</b> 1430 x 1220 x 980mm (LWH) SKU: PTSP01000KSG
<b>\$1,865*</b>	<b>\$2,975*</b>

ø455 Lid, Rim, & Seal Assy; ø455 Filter Basket; 1½" MBSP Fitting-Poly; 4 Pins 18 x 200; Skid Frame

# SUMPTRANS™

Fully-Drainable Chemical Tanks



SCAN TO SEE  
THIS PRODUCT  
IN ACTION!



**1,200 Litres**

Tank Only	with Frame
1700 x 1200 x 950mm (LWH) SKU: PTSP01200SG	1700 x 1200 x 990mm (LWH) SKU: PTSP01200KSG
<b>\$ 2,135*</b>	<b>\$ 3,425*</b>

ø455 Lid, Rim, & Seal Assy; ø455 Filter Basket; 1½" MBSP Fitting-Poly; 4 Pins 18 x 260; Skid Frame



**1,500 Litres**

Tank Only	with Frame
1700 x 1200 x 1150mm (LWH) SKU: PTSP01500SG	1700 x 1200 x 1190mm (LWH) SKU: PTSP01500KSG
<b>\$ 2,635*</b>	<b>\$ 4,075*</b>

ø455 Lid, Rim, & Seal Assy; ø455 Filter Basket; 1½" MBSP Fitting-Poly; 4 Pins 18 x 260; Skid Frame



**2,000 Litres**

Tank Only	with Frame
2150 x 1410 x 1150mm (LWH) SKU: PTSP02000SG	2150 x 1410 x 1180mm (LWH) SKU: PTSP02000KSG
<b>\$ 3,355*</b>	<b>\$ 5,210*</b>

ø455 Lid, Rim, & Seal Assy; ø455 Filter Basket; 2" MBSP Fitting-Poly; 4 Pins 24 x 260; Skid Frame



**2,400 Litres**

Tank Only	with Frame
2150 x 1410 x 1310mm (LWH) SKU: PTSP02400SG	2150 x 1410 x 1360mm (LWH) SKU: PTSP02400KSG
<b>\$ 3,940*</b>	<b>\$ 5,815*</b>

ø455 Lid, Rim, & Seal Assy; ø455 Filter Basket; ø455 Lid Seal Only; 2" MBSP Fitting-Poly; 4 pins 24 x 260; Skid Frame



**3,000 Litres**

Tank Only	with Frame
2430 x 1540 x 1280mm (LWH) SKU: PTSP03000SG	2430 x 1540 x 1350mm (LWH) SKU: PTSP03000KSG
<b>\$ 5,230*</b>	<b>\$ 8,320*</b>

ø455 Lid, Rim, & Seal Assy; ø455 Filter Basket; ø455 Lid Seal Only; 2" MBSP Fitting-Poly; 4 pins 24 x 260; Skid Frame

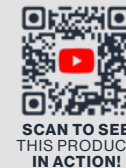


**4,000 Litres**

Tank Only	with Frame
2430 x 1540 x 1530mm (LWH) SKU: PTSP04000SG	2430 x 1540 x 1550mm (LWH) SKU: PTSP04000KSG
<b>\$ 5,905*</b>	<b>\$ 9,010*</b>

ø455 Lid, Rim, & Seal Assy; ø455 Filter Basket; ø455 Lid Seal Only; 2" MBSP Fitting-Poly; 4 pins 24 x 260; Skid Frame





### 5,000 Litres

Tank Only	with Frame
2760 x 2000 x 1520mm (LWH) SKU: PTSP05000SG	2760 x 2000 x 1620mm (LWH) SKU: PTSP05000KSG
<b>\$6,860*</b>	<b>\$10,005*</b>

ø455 Lid, Rim, & Seal Assy; ø455 Filter Basket; ø455 Lid Seal Only; 2" MBSP Fitting-Poly; 4 pins 24 x 330; Skid Frame



### 6,000 Litres

Tank Only	with Frame
2760 x 2000 x 1670mm (LWH) SKU: PTSP06000SG	2760 x 2000 x 1770mm (LWH) SKU: PTSP06000KSG
<b>\$8,585*</b>	<b>\$12,085*</b>

ø455 Lid, Rim, & Seal Assy; ø455 Filter Basket; ø455 Lid Seal Only; 2" MBSP Fitting-Poly; 4 pins 24 x 330; Skid Frame



### 8,000 Litres

Tank Only	with Frame
3600 x 2100 x 1619mm (LWH) SKU: PTSP08000SG	3600 x 2100 x 1773mm (LWH) SKU: PTSP08000KSG
<b>\$12,600*</b>	<b>\$17,400*</b>

ø455 Lid, Rim, & Seal Assy; ø455 Filter Basket; ø455 Lid Seal Only; 2" MBSP Fitting-Poly; 6 pins 24 x 330; Skid Frame



### 10,000 Litres

Tank Only	with Frame
3600 x 2100 x 1960mm (LWH) SKU: PTSP10000SG	3600 x 2100 x 2114mm (LWH) SKU: PTSP10000KSG
<b>\$14,660*</b>	<b>\$18,900*</b>

ø455 Lid, Rim, & Seal Assy; ø455 Filter Basket; ø455 Lid Seal Only; 2" MBSP Fitting-Poly; 6 pins 24 x 480; Skid Frame



### 12,000 Litres

Tank Only	with Frame
3600 x 2100 x 2319mm (LWH) SKU: PTSP12000SG	3600 x 2100 x 2473mm (LWH) SKU: PTSP12000KSG
<b>\$16,200*</b>	<b>\$20,900*</b>

ø455 Lid, Rim, & Seal Assy; ø455 Filter Basket; ø455 Lid Seal Only; 2" MBSP Fitting-Poly; 6 pins 24 x 480; Skid Frame

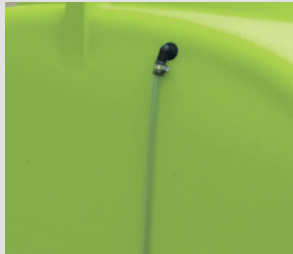


### 13,000 Litres

Tank Only	with Frame
3480 x 2250 x 2420mm (LWH) SKU: PTSP13000SG	3480 x 2250 x 2470mm (LWH) SKU: PTSP13000KSG
<b>\$17,615*</b>	<b>\$21,855*</b>

ø455 Lid, Rim, & Seal Assy; ø455 Filter Basket; ø455 Lid Seal Only; 2" MBSP Fitting-Poly; 4 pins 24 x 480; Skid Frame

# Tank Accessories



## Sight Level Kit (Fitted)

**\$114\***

**Level Kit**

See Your Tank Liquid Level at a Glance

SKU: ARN001-F



## 3" Hydrant Fill Lid

**\$1,250\***

**Fill Lid**

Hydrant Fill System with Tilt-Lid Mechanism & 3" Top Pipe

SKU: ARH080



## 80mm Hydrant Funnel Lid

**\$2,445\***

**Funnel Kit**

Funnel Fill System with Mesh Basket & 3" Top Pipe

SKU: ARU450F

## FLANGED BRASS

Tank Outlet Fittings



SKU	DESCRIPTION	RRP*(\$)
ARFB025	1" Brass tank outlet	\$66*
ARFB032	1¼" Brass tank outlet	\$88*
ARFB038R	1½" Brass tank outlet	\$103*
ARFB050R	2" Brass tank outlet	\$128*
ARFB080R	3" Brass tank outlet - with Reverse Thread to Prevent Loosening	\$238*
ARFB100R	4" Brass tank outlet - with Reverse Thread to Prevent Loosening	\$356*

## FLANGED POLY

Tank Outlet Fittings



SKU	DESCRIPTION	RRP*(\$)
ARFP020	¾" Tank Outlet - Flanged Poly	\$20*
ARFP025	1" Tank Outlet - Flanged Poly	\$20*
ARFP032	1¼" Tank Outlet - Flanged Poly	\$23*
ARFP038	1½" Tank Outlet - Flanged Poly	\$34*
ARFP050	2" Tank Outlet - Flanged Poly	\$39*
ARFP050R	2" Tank Outlet - Reverse Thread with 2 Seals Supplied M & F Threads	\$60*

## LIDS & BASKETS



SKU	DESCRIPTION	RRP*(\$)
ARLP150AV	Female Thread Tank Lid (150mm) - with Spring Breather Valve & Gasket	\$37*
ARLP250VSR	Male Thread 'Smoother-Line Lid (255mm) - with Fixed Ring; Labyrinth Double Breather Valve	\$77*
ARLP450VSS	Screw Tank Lid (455mm) - with Rim and Seal; Fixed Labyrinth Double Breather Valve	\$135*
ARLP450VSR	Hinged Tank Lid (455mm) - with Rim and Seal 180°; with Fixed Ring; Labyrinth Breather Valve	\$135*
ARLS450VSR	450mm Stainless Steel Hinged Lid	\$580*
TTI30065	450mm Aluminium Lid	\$399*
ARK200	Basket Filter (250mm) - To suit 255mm Lid; 18# Screen 210mm ø x 235mm deep	\$63*
ARK400	Basket Filter (450mm) - To suit 455mm Lid; 18# Screen 410mm ø x 235mm deep	\$81*
LLB195	BallBaffle™ Ø195mm - 1 ball per 7 Litres	\$8*
LLB380	LiquidLocker™ Ø380mm - 1 ball per 33 Litres	\$11*





# SPRAY

EQUIPMENT



# inter

## Inter™ Knapsack & Compression Sprayers



SCAN TO SEE  
THIS PRODUCT  
IN ACTION!

### Hand-Operated Compression Sprayers Less Pumping - More Spraying

LIGHT  
WEIGHT  
FOR EASE  
OF USE



- ✓ **Minimum effort** ergonomic handle
- ✓ **Large filter** with viton seals in lance handle and rustproof spring
- ✓ **Fiberglass lance** (excluding 1L)
- ✓ **Easy to use** pressurisation/carrying handle
- ✓ **Safety valve** with automatic release of excess pressure
- ✓ **Polypropylene tank**, lightweight and very strong
- ✓ **Connector** for accessories
- ✓ **Adjustable** conical nozzle



with 5-Year Warranty



Hand-Held Sprayer

\$49\*

Elite 1 Litre

SKU: PG10001L



Hand-Held Sprayer

\$120\*

Elite 5 Litres

SKU: PG10005L



Hand-Held Sprayer

\$154\*

Elite 6 Litres

SKU: PG10006L



Knapsack Sprayer

\$242\*

Evo 12 Litres

SKU: PG10012LE



Free Nozzle Kit



Knapsack Sprayer

\$266\*

Evo 16 Litres

SKU: PG10016LE

Featured with a Clear Liquid Level Strip

# inter ACCESSORIES

Quick Fit Accessories for Maximum Spray Options

## Spray Hoods

Hit your target every time without collateral damage, with the Inter Elite Spray Hoods.



Rectangular Hood

\$54\*

SKU: ATA00B



Conical Hood

\$43\*

SKU: ATA00C

## Pressure Regulator



**Function 1.5 bar:  
Herbicide**

(with deflective fan nozzle)

Regulator

\$63\*

SKU: ATA00A



**Function 3 bar  
Insecticide-fungicide**

(with hollow cone nozzle)



SET AND  
FORGET  
PRESSURE  
CONTROL

SIMPLE TO USE  
ACCURATE  
SPRAYING  
TOUGH & DURABLE

# inter ACCESSORIES

## Herbicide Spray Nozzles

Consistent application rates for spraying



**Elbow**  
with Fan Nozzle

**\$ 31\***

SKU: ATA00F



**L.V. Elbow**  
w/ Low Volume Herbicide Nozzle

**\$ 51\***

SKU: ATA00G

## Evolution Lance

Complete lance to suit Inter Evo 12/16



**Evolution Lance**  
with Fan Nozzle

**\$ 83\***

SKU: AHL011

## Flexible Pipe

250mm long flexible pipe. Can be manually moulded for specialised applications.



**Flexible Pipe**  
250mm Long

**\$ 34\***

SKU: ATA00I

## Flexible Double Nozzle

Tubes can be manually moulded for specialised spraying requirements. Two models available, one with adjustable cone nozzles (H) and one with fan nozzles (HF)

*Used for basal bark spraying and ant block treatments*



**with Adjustable Cone**  
460mm with 10mm Hose Tail

**\$ 66\***

SKU: ATA00HC

**with Fan Nozzle**  
460mm with 10mm Hose Tail

**\$ 80\***

SKU: ATA00HF

## Telescopic Lance

Gives your sprayer extendible length to reach hard to access areas.



**Versatile Lance**  
460mm with 10mm Hose Tail

**\$ 76\***

SKU: AHL002T

**Telescopic Lance**  
460mm with 10mm Hose Tail

**\$ 117\***

SKU: AHL003T



# inter ACCESSORIES

## Spray Booms

Three boom types to choose from to speed up your ground coverage.  
Lightweight for ease of use.



### Extendable Double

1m Nozzle Boom

**\$ 87\***

SKU: ATA0ORF



### Quadruple Nozzle Boom

with Cone Spray Nozzles 1.5m

**\$ 118\***

SKU: ATA0OEC

### Quadruple Nozzle Boom

with Fan Spray Nozzles 1.5m

**\$ 135\***

SKU: ATA0OEF

## Lance Extensions

Increase your spray reach with these lightweight extensions.  
Ideal for reaching higher targets from the safety of the ground.



### 0.5m Extension

**\$ 33\***

SKU: ATA00D

### 1m Extension (Aluminium)

**\$ 53\***

SKU: ATA00K

### 1.5m Extension

**\$ 77\***

SKU: ATA00L

## Seals



### Seals kit for Inter 7 / 9

(159,164,165)

**\$ 24\***

SKU: CGK10005L



### Seals kit for Inter Evo 12 / 16

**\$ 30\***

SKU: CGK10012L



# IK™ INDUSTRIAL SPRAYERS

with 5-Year Warranty

These special sprayers are amongst the toughest on the market, and can be used safely in a wide variety of situations and conditions.

- ✓ Made of special, **high resistance materials for use with various chemicals**
- ✓ **Viton seals** for excellent **chemical resistance and durability**
- ✓ See liquid level at a glance with **tank graduations**
- ✓ **Pressure safety valve** ensures sprayer is protected from over pressurisation

WITH HEAVY-DUTY  
VITON  
SEALS

FOR  
EXCELLENT  
CHEMICAL  
RESISTANCE



## Ideal for:

- |                       |                    |
|-----------------------|--------------------|
| ✓ Truck Washing       | ✓ Animal Husbandry |
| ✓ Brick Cleaning      | ✓ Amenity Cleaning |
| ✓ Carpet Cleaning     | ✓ Disinfecting     |
| ✓ Wallpaper Stripping | ✓ Degreasing       |



1L Hand-Held Sprayer

**IK 1** Litre **\$76\***

SKU: PGK0001L



6L Hand-Held Sprayer

**IK 6** Litres **\$230\***

SKU: PGK0006L



8L Hand-Held Sprayer

**IK 8** Litres **\$241\***

SKU: PGK0008L



12L Knapsack Sprayer

**IK 12** Litres **\$299\***

SKU: PGK0012L



# WeedMasta™ 16R

Rechargeable Knapsack Sprayer with Trolley

- ◆ 16 Litre capacity tank, ergonomically designed for maximum carrier comfort
- ◆ Padded shoulder straps and backrest reduces user fatigue
- ◆ Spray flow rate control for spray accuracy and reduced chemical wastage
- ◆ Over two hours of continuous spraying from a rechargeable sealed lead acid 12 volt battery
- ◆ No more frustrating tangles with our kink resistant hose
- ◆ Sturdy trolley with large handle and wheels for ergonomic operation
- ◆ Reliable and effective 2.4 L/min 70psi pump for maximum spray capacity
- ◆ On-off switch control with fuse protection
- ◆ Supplied with battery charging kit



Trolley and Knapsack  
Can Be Easily Separated!

\*GST included | Freight Rates Apply



**Pump: Speed Control**

**\$348\***

**16 Litres**

**Pump: Speed Control with 2.4 L/min 70psi**

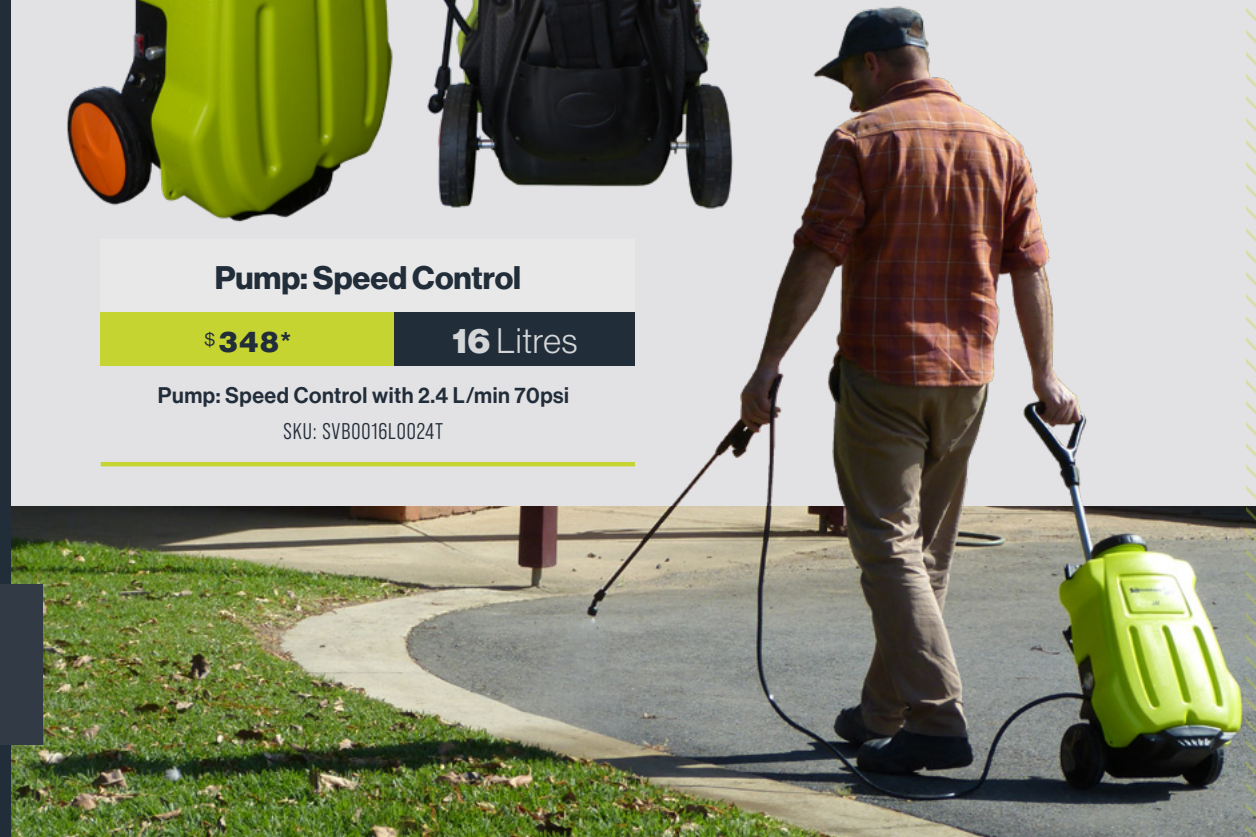
SKU: SVB0016L0024T



SCAN TO SEE  
THIS PRODUCT  
IN ACTION!

**TIRED OF PUMP-UP  
HAND SPRAYERS?**

Over 2 hours of continuous  
spraying from a single charge!





# WeedControl™

## SPOT SPRAYERS

Spot Sprayers with 12v Pump



SCAN TO SEE  
THIS PRODUCT  
IN ACTION!



### Spot Sprayers with 8.3 L/min Pump & Powerjet Spray Gun.

The WeedControl™ 12v Sprayer is a reliable choice for any property owner who takes pride in keeping their property in top condition.

The WeedControl™ is designed to be mounted to UTEs, UTV's and ATVs, ensuring your spraying task gets completed safely.

### KEY FEATURES



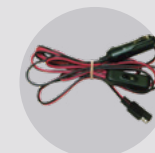
8.3L/min 70psi  
EverFlow 12v pump  
with Pressure regulator  
and gauge for  
controlled spraying



Sturdy UV stabilized  
tank with drain for  
easy cleaning



4.5m Spray hose with  
PowerJet spray gun  
& adjustable brass  
nozzle



2.4m electrical cables  
with 12v adaptor &  
alligator clip



# WEEDCONTROL™

Spot Sprayers with 12v Pump



SCAN TO SEE  
THIS PRODUCT  
IN ACTION!



\$ 590\*

55 Litres

12v 8.3L/min 70psi Pump with Spray Gun  
865 x 390 x 345mm (LWH)

SKU: SVS0055L0077



\$ 690\*

95 Litres

12v 8.3L/min 70psi Pump with Spray Gun  
865 x 390 x 435mm (LWH)

SKU: SVS0095L0077



\$ 965\*

150 Litres

12v 8.3L/min 70psi Pump with Spray Gun  
900 x 620 x 500mm (LWH)

SKU: SVS0150L0077



\$ 1,190\*

225 Litres

12v 8.3L/min 70psi Pump with Spray Gun  
900 x 620 x 650mm (LWH)

SKU: SVS0225L0077

## SKID-MOUNTED

For Side-by-Sides with  
8.3L/min 70psi; 12v Pump



\$ 1,685\*

150 Litres

\$ 2,070\*

with 4m Boom

12v 8.3L/min 70psi Pump with Spray Gun  
1000 x 720 x 550mm (LWH)

SKU: SVK0150L0077 / SVK0150L0077B



\$ 1,925\*

225 Litres

\$ 2,310\*

with 4m Boom

12v 8.3L/min 70psi Pump with Spray Gun  
1000 x 720 x 750mm (LWH)

SKU: SVK0225L0077 / SVK0225L0077B

# WeedControl™

12v Spray Trailers



## Spot Spray Trailers with 8.3 L/min Pump & Powerjet Spray Gun.

The WeedControl™ 12v spray trailer is a reliable choice for any property owner who takes pride in keeping their property in top condition.

The WeedControl™ is designed to be towed by a standard or zero-turn mower ensuring your spraying task gets completed safely.

## TRAILED



with **Solid Rubber Tyres**



SCAN TO SEE THIS PRODUCT IN ACTION!

### STANDARD TRAILERS

Standard drawbar for smooth towing - suitable for any mower



**\$1,135\***

**55 Litres**

12v 8.3 with 2m Boom  
SKU: SVT0055L0077B2

**\$1,220\***

**95 Litres**

12v 8.3 with 2m Boom  
SKU: SVT0095L0077B2

### ZERO-TURN TRAILERS

Long drawbar for extra-sharp turning - up to 90° - more suitable for zero-turn mowers



**\$1,135\***

**55 Litres**

12v 8.3 with 2m Boom  
SKU: SVT0055L0077B2

**\$1,220\***

**95 Litres**

12v 8.3 with 2m Boom  
SKU: SVT0095L0077B2

### ATV TRAILERS

Large pneumatic tyres for handling rough terrain - suitable for mowers and ATV's



**\$2,595\***

**150 Litres**

12v 8.3 with 3m Boom  
SKU: SVT0150L0077B3

**\$2,835\***

**225 Litres**

12v 8.3 with 3m Boom  
SKU: SVT0225L0077B3



# WEEDCONTROL™ BOOMS AND ACCESSORIES



SCAN TO SEE  
THIS PRODUCT  
IN ACTION!



**\$197\***

**2 Metre Boom**

2m Spray width  
CODE: ABS020



**\$465\***

**3 Metre Boom**

3m Spray width  
CODE: ABS030



**\$545\***

**4 Metre Boom**

4m Spray width  
CODE: ABS040



**\$14\***

**Poly 1 GHT Nut**

& Tail with  
10mm Hosetail  
SKU: ATPXP2510S



**\$23\***

**Nozzle Body Assy Tee**

10mm Barbs (2 way)  
SKU: ATPNDTT10C



**\$23\***

**Nozzle Body Assy Elbow**

Pack 2 | (1 way)  
SKU: ATPNDE10CX2



**\$21\***

**Drain Cap**

Complete with Seal  
SKU: ATPVC20T



**\$11\***

**Lance Clips**

2 pcs of Holding Clips  
SKU: CHCLP12MMX2



**\$5\***

**Filter**

50 Mesh Filter  
SKU: 8079-PP-50



**\$53\***

**Brown Nozzle**

Deflector 140°  
(Pack 10)  
SKU: CNSDEF140025



**\$191\***

**PowerJet Spray Gun**

700mm overall length  
with 10mm hose tail  
SKU: AHG110ST



**\$12/m**

**Spray Hose**

10mm Spray Hose  
SKU: CUY58010MM



**\$37\***

**Lid**

150mm Screw Lid  
with Seal  
SKU: ARLP150AT



**\$135\***

**Regulator**

Pressure Regulator  
Assembly | QA  
SKU: ATRV027LQ12



**\$28\***

**Poppit Valve**

On-Off  
Valve  
SKU: 34-140141



**\$330\***

**Pump**

Remco™ 12v Pump  
100psi 8.3 L/min  
SKU: I-11355



**\$34\***

**Gauge**

Gauge 0-100psi to  
Suit SVS WeedControl  
SKU: CFGD100P08B

# Strike™

## Professional 12v Spot Sprayers



SCAN TO SEE THIS PRODUCT IN ACTION!

The Strike, a sprayer that has proved itself over many years as a versatile and reliable professional 12v sprayer in our TTI range.



\$1,790\*

200 Litres

1055 x 700 x 580mm (LWH)  
6m Hose & Gun;  
8.3L/min 100psi Pump

SKU: PVQ0200LK0076



\$2,780\*

400 Litres

1200 x 800 x 700mm (LWH)  
6m Hose & Gun;  
8.3L/min 100psi Pump

SKU: PVQ0400LK0076

### KEY FEATURES



8.3L/min 100psi Remco 12v pump mounted under pump cover for protection



Fully-drainable tank with a hot dip galvanised base frame



6m Spray hose with PowerJet spray gun & adjustable brass nozzle



Pressure regulator and gauge for accurate & controlled spraying

### STRIKE & REELSTRIKE BOOM OPTIONS



BoomTech Nozzle

\$540\*

Boom Tech Nozzle Kit with Tailgate Bracket

SKU: ABT001



Boomless Nozzle #2

\$570\*

HitchIt Hayman Reece Attachment; Boomless Nozzle

SKU: ABK02-GN



Versatile Boom 4m

\$895\*

HitchIt Hayman Reece Attachment; Versatile Boom

SKU: ABVL040-GN



# ReelStrike™

Professional 12v Spot Sprayers  
with 30m Reel

The ReelStrike™, a TTi icon sprayer that has proved itself over many years as the most versatile and reliable professional 12v sprayer in our TTi range.

The 30m reel allows you to access those “hard to get to” areas, while the 100psi pump gives you that extra pressure when you need to hit your spray target from a distance.

## KEY FEATURES



8.3L/min 100psi Remco 12v pump mounted under pump cover for protection



Fully-drainable tank with a sturdy hot dip galvanised base frame



30m heavy duty poly hose reel with PowerJet spray gun



Pressure regulator and gauge for accurate & controlled spraying



SCAN TO SEE  
THIS PRODUCT  
IN ACTION!



\$2,740\*

200 Litres

1055 x 700 x 1100mm (LWH)  
30m Hose Reel; 8.3 L/min  
100psi Pump

SKU: PVQ0200LK0076H3



\$3,880\*

400 Litres

1200 x 800 x 1220mm (LWH)  
30m Hose Reel; 8.3 L/min  
100psi Pump

SKU: PVQ0400LK0076H3





# OnDeck™

300L Purpose-Built UTV Sprayer



**NEW!**

**Possibly the most unique and well-designed UTV Sprayer, the OnDeck™ suits the ever growing UTV market.**

The 300L model comes in a clever choice of pump, motor and hose reel combinations. From weed spraying to firefighting, the OnDeck range is sure to be a valuable investment.



**FULLY DRAINABLE SUMP TANK**



**INTEGRATED FRESH WATER TANK**

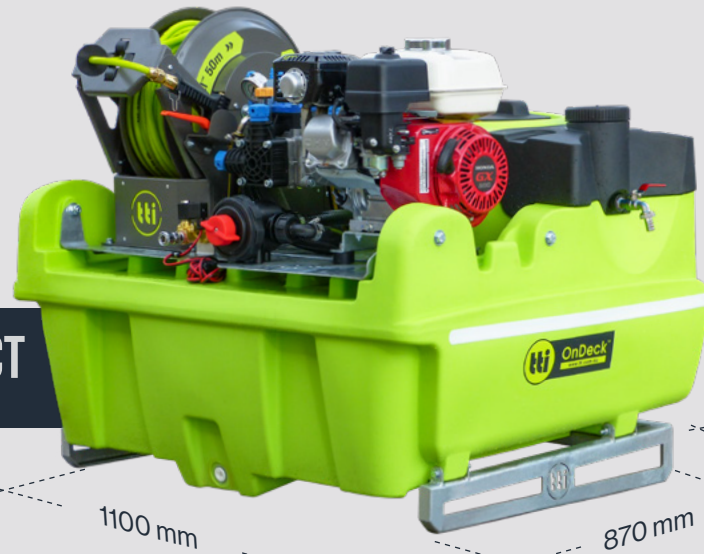




SCAN TO SEE THIS PRODUCT IN ACTION!

## COMPACT

SEE PAGE 48 →



1100 mm

870 mm

## STANDARD

SEE PAGE 46 →



1000 mm

1250 mm

## KEY FEATURES



Fully-drainable Tank with tie-down provisions & integrated lifting handles



Pressure regulator with gauge & bypass system



Integrated freshwater bottle & tap for hand-washing



Galvanised Forkable Steel Frame

## NEW ONDECK™ TWIN SUPERREEL™





# OnDeck™

## STANDARD

Purpose-Built Sprayer for UTVs



Dim (LWH): 1000 x 1250 x 600mm

Fits UTVs including:

**Kubota**

**LANDBOSS**

### BOOM & SOLENOID OPTIONS



**Boom Elec On/Off**

**\$ 323\***

Solenoid Valve Kit &  
Pressure Relief  
(Fitted)

SKU: ATVS10B036F



**BoomTech™ Nozzle**

**\$ 540\***

Universal Stainless Steel  
Tailgate Mounting Bracket;  
Boomless Nozzle

SKU: ABT001



**#2 Boomless Nozzle**

**\$ 570\***

HitchIt Hayman Reece  
Attachment; Boomless  
Nozzle

SKU: ABK02-GN



**4m Versatile Boom**

**\$ 895\***

HitchIt Hayman Reece Attachment;  
Versatile Boom

SKU: ABVL040-GN



**4m Compact™ Boom**

**\$ 2,135\***

4m Folding Boom with Hayman Reece  
Attachment

SKU: ABM040-GN



# STANDARD

✓ Fits UTVs including Kubota and LandBoss

✓ Dim (LWH): 1000 x 1250 x 600mm



SCAN TO SEE THIS PRODUCT IN ACTION!



**\$3,580\***

**300 Litres**

8.3 L/min 100psi 12v Pump  
30m Hose Reel; Spray Gun

SKU: PUD0300L0076H3

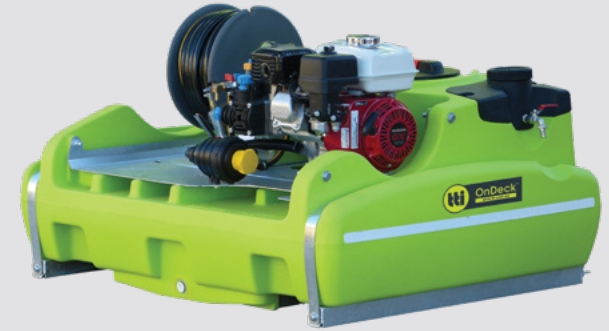


**\$4,370\***

**300 Litres**

12 L/min Pump; Honda GX35  
30m Hose Reel; Spray Gun

SKU: PUD0300L0120H



**\$6,735\***

**300 Litres**

22 L/min Pump; Honda GX200  
30m Hose Reel; Spray Gun

SKU: PUD0300L0220H3

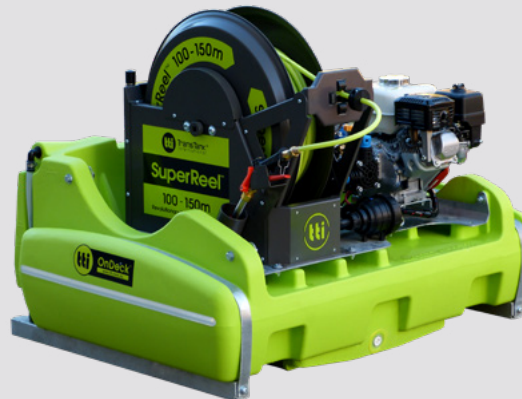


**\$9,620\***

**300 Litres**

22 L/min Pump with GX200  
50m Auto-Rewind SuperReel™

SKU: PUD0300L0220Q50



**\$10,490\***

**300 Litres**

22 L/min Pump with GX200  
100m Auto-Rewind SuperReel™

SKU: PUD0300L0220Q1



# OnDeck™

## COMPACT

Purpose-Built Sprayer for UTVs

Dim (LWH): 870 x 1100 x 850mm

Fits UTVs including:



### BOOM & SOLENOID OPTIONS



#### Boom Elec On/Off

\$ 323\*

Solenoid Valve Kit & Pressure Relief (Fitted)

SKU: ATVS10B036F



#### BoomTech™ Nozzle

\$ 540\*

Universal Stainless Steel Tailgate Mounting Bracket; Boomless Nozzle

SKU: ABT001



#### #2 Boomless Nozzle

\$ 570\*

HitchIt Hayman Reece Attachment; Boomless Nozzle

SKU: ABK02-GN



#### 4m Versatile Boom

\$ 895\*

HitchIt Hayman Reece Attachment; Versatile Boom

SKU: ABVL040-GN



#### 4m Compact™ Boom

\$ 2,135\*

4m Folding Boom with Hayman Reece Attachment

SKU: ABM040-GN



# COMPACT

✓ Fits UTVs including Polaris, Honda and Can-Am ✓ **150L** (LWH): 730 x 950 x 500mm | **300L** (LWH): 870 x 1100 x 850mm



SCAN TO SEE THIS PRODUCT IN ACTION!



**\$1,910\***

**150** Litres

8.3 L/min 100psi 12v Pump;  
6m Hose; Spray Gun

SKU: PUD0150L0076



**\$2,805\***

**150** Litres

8.3 L/min 100psi 12v Pump;  
30m Hose Reel; Spray Gun

SKU: PUD0150L0076H3



**\$3,580\***

**300** Litres

8.3 L/min 100psi 12v Pump;  
30m Hose Reel; Spray Gun

SKU: PUDA0300L0076H3



**\$4,370\***

**300** Litres

12 L/min Pump; Honda GX35;  
30m Hose Reel; Spray Gun

SKU: PUDA0300L0120H



**\$6,735\***

**300** Litres

22 L/min Pump; Honda GX200  
30m Hose Reel; Spray Gun

SKU: PUDA0300L0220H3



**\$9,620\***

**300** Litres

22L/min Pump; Honda GX200;  
50m SuperReel™

SKU: PUDA0300L0220Q50



# OnDeck™

## WITH SUPERREEL™

Compact Single or Twin Reel Sprayer

Dim (LWH): 980 x 1185 x 1095mm

Fits UTVs including:



### BOOM & SOLENOID OPTIONS



**Boom Elec On/Off**

**\$ 550\***

Solenoid Valve Kit & Pressure Relief (Fitted)

SKU: I-15047



**BoomTech™ Nozzle**

**\$ 540\***

Universal Stainless Steel Tailgate Mounting Bracket; Boomless Nozzle

SKU: ABT001



**#2 Boomless Nozzle**

**\$ 570\***

HitchIt Hayman Reece Attachment; Boomless Nozzle

SKU: ABK02-GN

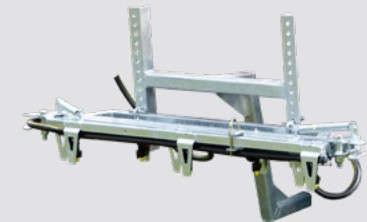


**4m Versatile Boom**

**\$ 895\***

HitchIt Hayman Reece Attachment; Versatile Boom

SKU: ABVL040-GN



**4m Compact™ Boom**

**\$ 2,135\***

4m Folding Boom with Hayman Reece Attachment

SKU: ABM040-GN





# COMPACT WITH SUPERREEL™

✓ Dim (LWH): 980 x 1185 x 1095mm



SCAN TO SEE THIS PRODUCT IN ACTION!



**\$ 14,125\*** **300 Litres**

34 L/min Pump & GX200  
Twin 50m SuperReel™

SKU: PUDT0300L0340TQ50



**\$ 11,155\*** **300 Litres**

34 L/min Pump & GX200  
Single 100m SuperReel™

SKU: PUDT0300L0340Q1



**\$ 11,800\*** **300 Litres**

34 L/min Pump & GX200  
Single 150m SuperReel™

SKU: PUDT0300L0340Q2



**\$ 16,055\*** **300 Litres**

34 L/min Pump & GX200  
Twin 100m SuperReel™

SKU: PUDT0300L0340TQ1



**\$ 16,700\*** **300 Litres**

34 L/min Pump & GX200  
Twin 150m SuperReel™

SKU: PUDT0300L0340TQ2

# SpotPro™

Motorised Spot Sprayer

TTi's SpotPro™ sprayers features a powerful 360psi pump coupled to a GX35 4-stroke motor, delivering great performance out of the 30m hose reel.

## KEY FEATURES



Reliable Genuine Honda GX35 Engine



12L/min 360psi Commando Pump



30m of 8mm Hose with Reel



Adjustable Turbo Spray Gun



SCAN TO SEE THIS PRODUCT IN ACTION!



**\$3,465\***

**220 Litres**

925 x 710 x 910mm (LWH)

SKU: SU0220L0120H

**\$4,065\***

**400 Litres**

1620 x 710 x 910mm (LWH)

SKU: SU0400AL0120H

## SPOTPRO™ & SPOTPRO™ DELUXE BOOM OPTIONS



**BoomTech Nozzle**

**\$540\***

Boom Tech Nozzle Kit with Tail Gate Bracket

SKU: ABT001



**#2 Boomless Nozzle**

**\$570\***

HitchIt Hayman Reece Attachment; Boomless Nozzle

SKU: ABK02-GN



**4m Versatile Boom**

**\$895\***

HitchIt Hayman Reece Attachment; Versatile Boom

SKU: ABVL040-GN



# SpotPro™

## DELUXE

### Deluxe Motorised Spot Sprayer

The SpotPro™ Deluxe features a fully drainable tank for maximum use of spray mix, mounted to a forkable steel frame.

The powerful 360psi pump coupled to a GX35 4-stroke motor, delivering great performance out of the 30m hose reel. It's the preferred UTV Weed Sprayer, by many satisfied customers.

#### KEY FEATURES



Reliable Genuine Honda GX35 Engine



12L/min 360psi Commando Pump



30m of 8mm Hose with Reel



Adjustable Turbo Spray Gun



Fully-Drainable Tank with Steel Frame



Steel Skid Frame



SCAN TO SEE THIS PRODUCT IN ACTION!



\$3,700\*

200 Litres

1100 x 700 x 1110mm (LWH)

SKU: PUF0200L0120H



\$4,560\*

400 Litres

1200 x 800 x 1220mm (LWH)

SKU: PUF0400L0120H





# TopCrop™

Professional UTE Slip-On Field Sprayer



**A high performing UTE mounted field sprayer. Boasting a genuine GX200 Honda Motor, coupled to the reliable Bertolini pump, and 30m hose reel.**

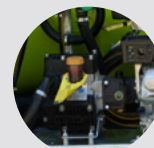
The forkliftable steel frame allows both easy loading and safe securing of your spray unit to your vehicle, allowing it to be put to work in minutes.



SCAN TO SEE THIS PRODUCT IN ACTION!



## KEY FEATURES



22L/min Bertolini Italian Pump



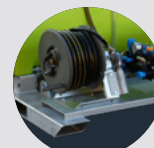
Fully-drainable Sump Tank with 455mm Hinged Lid & Basket Filter



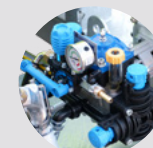
Genuine Reliable Honda GX200



Galvanized Steel Frame with Forklift Pockets



Heavy-duty 30m Hose Reel with Adjustable Pistol Grip Spray Gun



Pressure Regulator with Gauge for Controlled Spraying & Bypass Agitation System





SCAN TO SEE THIS PRODUCT IN ACTION!



**\$ 5,525\***

**300 Litres**

1250 x 600 x 950mm  
SKU: PUF0300L0220H3



**\$ 7,170\***

**400 Litres**

1489 x 970 x 1100mm  
SKU: PUF0400L0220H3



**\$ 7,300\***

**500 Litres**

1740 x 1250 x 760mm  
SKU: PUF0500L0220H3



**\$ 7,485\***

**600 Litres**

1740 x 1250 x 920mm  
SKU: PUF0600L0220H3



**\$ 8,090\***

**800 Litres**

1900 x 1430 x 810mm  
SKU: PUF0800L0220H3



**\$ 8,355\***

**1000 Litres**

1900 x 1430 x 1000mm  
SKU: PUF1000L0220H3

### Add a Compact Spray Boom!

Note: Available with 400L +



**\$ 2,730\***

**4m Boom**

4m Galvanised Steel with Boom Bracket Arms

**\$ 3,356\***

**6m Boom**

6m Galvanised Steel with Boom Bracket Arms

**\$ 3,975\***

**8m Boom**

8m Galvanised Steel with Boom Bracket Arms

**UPGRADE!**  
**50m SuperReel™**

**\$ 2,895\***





# SuperReel™ SINGLE

Field Sprayer with Single Auto-Rewind SuperReel™



**The SuperReel™ slip-on field sprayer is the professionals proven choice.**

The heavy-duty electric rewind reel features a powerful 120w 12v motor and is capable of winding up to 150m of hose. The FrictionFree™ nylon hose, genuine Honda engine and Bertolini pump ensures this sprayer will perform in any conditions.



SCAN TO SEE THIS PRODUCT IN ACTION!

2-Year Warranty On Reel



## KEY FEATURES



34L/min 580psi Bertolini Italian pump with Genuine Honda GX200 engine



Fully-Drainable Poly Tank with Forkable Galvanised Steel Frame



Single 100m 12v Auto Rewind SuperReel™ with Wireless Remote Control



Anti-kink nylon hose with adjustable Turbo400 spray gun

**Upgrade to 150m Length Reels**

**\$323\***



# SUPERREEL™

Field Sprayer with Single Auto-Rewind SuperReel™



SCAN TO SEE THIS PRODUCT IN ACTION!

## SINGLE REEL



**SHORT**

**\$ 12,605\***

**400 Litres**

1800 x 970 x 1000mm  
SKU: PUF0400L0340Q1



**\$ 12,820\***

**500 Litres**

2030 x 1070 x 690mm  
SKU: PUF0500L0340Q1



**SHORT**

**\$ 12,975\***

**600 Litres**

1800 x 970 x 1160mm  
SKU: PUF0600L0340Q1



**\$ 12,975\***

**600 Litres**

2030 x 1070 x 850mm  
SKU: PUF0600L0340Q1



**\$ 13,225\***

**800 Litres**

2180 x 1220 x 870mm  
SKU: PUF0800L0340Q1



**\$ 13,635\***

**1000 Litres**

2180 x 1220 x 1140mm  
SKU: PUF1000L0340Q1



# SuperReel™ TWIN

Field Sprayer with Single Auto-Rewind SuperReel™



**Increase Your Spraying Efficiency with the SuperReel™ twin reel slip-on field sprayer.**

The professionals proven choice, the SuperReel Sprayer with twin heavy-duty electric rewind reels are capable of winding up to 150m of hose. The FrictionFree™ nylon hose, genuine Honda engine and Bertolini pump ensures this sprayer will perform in any conditions.



SCAN TO SEE THIS PRODUCT IN ACTION!

2-Year Warranty On Reel



## KEY FEATURES



54L/min 580psi Bertolini Italian pump with Genuine Honda GX200 engine



Fully-Drainable Poly Tank with Forkable Galvanised Steel Frame



Twin 100m 12v auto rewind SuperReel's with wireless remote control



Anti-kink nylon hose with adjustable Turbo400 spray guns

**Upgrade to 150m Length Reels**

**\$ 646\***



# SUPERREEL™

Field Sprayer with Twin Auto-Rewind SuperReel™



SCAN TO SEE THIS PRODUCT IN ACTION!

## TWIN REEL



SHORT

\$ 20,125\*

400 Litres

1800 x 1280 x 990mm (LWH)  
SKU: PUF0400L0540TQ1



\$ 20,335\*

500 Litres

2090 x 1300 x 832mm (LWH)  
SKU: PUF0500L0540TQ1



SHORT

\$ 20,490\*

600 Litres

1800 x 1280 x 990mm (LWH)  
SKU: PUF0600L0540TQ1



\$ 20,490\*

600 Litres

2180 x 1310 x 870mm (LWH)  
SKU: PUF0600L0540TQ1



\$ 20,735\*

800 Litres

2180 x 1310 x 1140mm (LWH)  
SKU: PUF0800L0540TQ1



\$ 21,140\*

1000 Litres

2180 x 1310 x 1140mm (LWH)  
SKU: PUF1000L0540TQ1





# TrailPro™

## ATV/UTV Spray Trailer

**The hitch and go convenience of the TrailPro™ trailed sprayers for ATV/UTV's, gives you the versatility of reel spraying and boom spraying from the one unit!**

The 200L or 400L TrailPro™ trailer is fitted with the Honda GX200 motor, coupled to the renowned Bertolini Italian pump, so its genuine, powerful, and reliable pump and motor combination. The Standard trailer is fitted with a 8.3 L/min 100psi 12v pump which is mounted underneath a protected pump cover. Simply hitch up to your ATV or UTV and get your spraying jobs done with ease!



# TrailPro™

## ATV/UTV 12v Spray Trailer

The hitch and go convenience of the TrailPro 12v ATV boom spray trailer is second to none. Quiet yet powerful, the 12v TrailPro is a true pleasure to use and operate.

Compact, tough, economical, the 12v TrailPro makes for safe spraying, and gives the operator the versatility of reel spraying and boom spraying from the one unit.

### KEY FEATURES



8.3L/min 100psi Remco 12v Pump Under Protected Pump Cover



Sturdy Hot Dip Galvanised Steel Chassis with High Flotation Tyres



Fully-Drainable Tank with 250mm Screw Lid & Basket Filter



1.2m Versatile Boom Fitted with 4m Swath



SCAN TO SEE THIS PRODUCT IN ACTION!



\$4,970\*

200 Litres

8.3 L/min 12v Pump; 6m Hose & Lance; 1.2m Versatile Boom

SKU: PRAV0200L0076-VB

\$5,865\*

200 Litres with Reel

8.3 L/min 12v Pump; 1.2m Versatile Boom; 30m Hose Reel

SKU: PRAV0200L0076H3-VB





# TrailPro™ DELUXE

Deluxe ATV/UTV Spray Trailer



SCAN TO SEE  
THIS PRODUCT  
IN ACTION!

The professionals choice, the TrailPro™ Deluxe provides unmatched performance.

The powerful GX200 Honda Engine, coupled with the Italian Bertolini 22L/min Pump, provides consistent true performance out of the spray gun or boom. The well balanced and robust design of the TrailPro handles rough terrain with ease.

## KEY FEATURES



22L/min 290psi Bertolini Italian Pump with Genuine Honda GX200 Engine



Fully-Drainable Sump Tank with 250mm Screw Lid & Basket Filter



Sturdy Hot Dip Galvanised Steel Chassis with High Flotation Tyres



Heavy-Duty 30m Hose Reel with Adjustable Pistol Grip Spray Gun or 6m Hose



# TRAILPRO™ DELUXE

Deluxe ATV/UTV Spray Trailer



SCAN TO SEE THIS PRODUCT IN ACTION!



Pictured with Booms



**DUAL AXLE**

**200 Litres**

**\$7,225\***

**\$7,955\***

with 6m Hose & Gun  
SKU: PRAA0200L0220

with 30m Reel  
SKU: PRAA0200L0220H3

22 L/min Pump; GX200 Honda Engine; Flotation Tyres;

**400 Litres**

**\$8,490\***

**\$9,455\***

with 6m Hose & Gun  
SKU: PRAA0400L0220

with 30m Reel  
SKU: PRAA0400L0220H3

22 L/min Pump; GX200 Honda Engine; Flotation Tyres;

## OPTIONS



**\$ 650**

**4m Versatile Boom**

1.2m Versatile Boom with 4m Swath



**\$ 1,945\***

**4m Compact Boom**

4m Compact Spray Break-away Boom with Non-drip Nozzles



**\$ 2,580\***

**6m Compact Boom**

6m Compact Spray Break-away Boom with Non-drip Nozzles



**\$3,045\***

**Foam Marker Kit**

Double Sided Foam Marker Kit with Solenoid Controls (for 6m Boom)



**\$ 2,895\***

**50m SuperReel™**

SuperReel™ 50m Auto-Rewind 12v Reel (Upgrade from 30m Poly Reel)



# GlidePath™

Spray Trailers with Folding Boom



## KEY FEATURES

**TTi's GlidePath™ Trailers are the perfect choice for farmers looking to keep weeds down and profits up.**

Whether spraying weeds or fertilizer, the GlidePath™ spray trailer will get the job done on time, during the optimum small window of opportunity given.



Genuine Honda GX200 engine with 75L/min Bertolini Italian Pump



Fully-Drainable Poly Tank with 25-Year Warranty



Heavy-Duty Galvanised Steel Chassis with 65mm 2T-Rated Galvanised Axles



Heavy-Duty 30m Hose Reel with Adjustable Pistol Grip Spray Gun



Pressure Regulator with Gauge for Accurate & Controlled Spraying



50L Fresh Water Tank for Hand Washing



# GLIDEPATH™

## Spray Trailers with Folding Boom



SCAN TO SEE THIS PRODUCT IN ACTION!



Pictured with Optional Boom



**\$17,755\*** **1000 Litres**

1000L UnBraked with GX200 Honda Motor and 75L/min Pump & 3-Way Regulator

SKU: PRAX1000L0750Z

**\$20,570\*** **1000 Litres**

1000L Braked / Registerable with GX200 Honda Motor and 75L/min Pump & 3-Way Regulator

SKU: PRAQ1000L0750Z

**\$18,905\*** **1200 Litres**

1200L UnBraked with GX200 Honda Motor and 75L/min Pump & 3-Way Regulator

SKU: PRAX1200L0750Z

**\$21,585\*** **1200 Litres**

1200L Braked / Registerable with GX200 Honda Motor 75L/min Pump & 3-Way Regulator

SKU: PRAQ1200L0750Z

## UPGRADE OPTIONS



**\$3,190\***

**8m Boom**

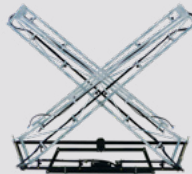
Heavy-Duty Steel Boom



**\$5,780\***

**10m Boom**

Heavy-Duty Self-Leveling Steel Boom



**\$5,935\***

**12m Boom**

Heavy-Duty Self-Leveling Steel Boom



**\$825\***

**30m Reel**

30m Poly Hose Reel with Spray Gun



**\$2,895\***

**50m SuperReel™**

50m SuperReel™ Auto-Rewind Reel



**\$3,045\***

**Foam Marker**

Double Sided Deluxe Foam Marker Kit Fitted



# SuperTrail™

Spray Trailers with SuperReel™  
Auto-Rewind Reel



**TTi's SuperTrail™ Trailers are the perfect choice spray trailer for councils, Landcare & environmental organisations.**

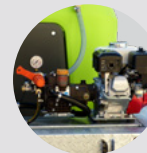
Custom built to suit your requirements, the SuperTrail spray trailer will get the job done on time, even in the toughest terrain.

Speak to us about your specific requirements

Fitted with  
Twin SuperReels™



## KEY FEATURES



Genuine Honda GX200 Engine with 54L/min 580psi Bertolini Italian Pump



Fully-Drainable Poly Tank with 25-Year Warranty



Heavy-Duty Galvanized Steel Chassis with 65mm 2T-Rated Galvanized Axles



Protected 3 Nozzle Boom & Twin 100m Auto Rewind SuperReels



# Panther™ 1100L New Spray Trailer

**NEW!**



**1,000** Litres

**Braked / Registerable; Single Axle Trailer;  
GX200 Honda; 54 L/min 40Bar Pump**

SKU: PRAQS1000L0540TQ2



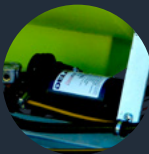


# SilageMaster™

Silage Applicator with  
Wireless Remote Control

Silage applicator kit with 100 & 200 litre spray tank, double nozzle silage boom, regulator kit & 12 volt 8.3 L/min 100psi pump & wireless remote on/off switch.

## KEY FEATURES



8.3L/min 100psi  
Remco 12v pump



Covers 1 metre  
with 2 non-drip  
nozzles  
(green nozzles)



Ideal for  
mounting to a  
baler



Wireless remote  
On/off switch for  
boom activation



**FREE!**  
WIRELESS  
REMOTE

\$1,840\*

100 Litres

Silage Applicator with 2 Nozzle Boom  
815 x 450 x 600mm (LWH)

SKU: PJA0100L

\$1,980\*

200 Litres

Silage Applicator with 2 Nozzle Boom  
940 x 600 x 760mm (LWH)

SKU: PJA0200L





# CUSTOM SPRAY EQUIPMENT

Call to Discuss Your Customised Spray Solutions!

## CHOOSE FROM A HUGE RANGE OF SPRAY EQUIPMENT

We build spray trailers for councils, large contractors, mines & much more!

Give our helpful customer service team a challenge to build the sprayer you need!

CUSTOMISED TO YOUR REQUIREMENTS



Call to Discuss Your Customised Spray Solutions!

**1800 816 277**



# LinkOn™

3-Point Linkage  
Professional Sprayers



Hook up and go with TTi's LinkOn™ Plus Sprayer Range.

From small acreage farms to large scale operations, TTi's range of 3 point linkage boom sprayers are the perfect choice to get your boom spraying done on time using your tractor.



UV STABILISED, CHEMICAL RESISTANT TANK



HAND WASH TANK





SCAN TO SEE  
THIS PRODUCT  
IN ACTION!



### KEY FEATURES



Heavy-Duty Hot Dip Galvanised Frame with Forklift Pockets



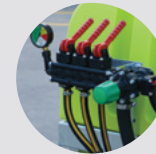
Fully-Drainable Tank with Basket Filter & 25 Year Warranty



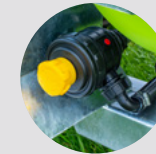
Built-in 10L Freshwater Tank with Tap for Handwashing



22L/min or 75L/min Bertolini PTO Pump with PTO Shaft



Pressure Regulator with Gauge for Accurate & Controlled Spraying



Suction Filter (Fitted)





Note: Pricing below does not include the boom or hose reel



SCAN TO SEE  
THIS PRODUCT  
IN ACTION!



**\$5,245\***

**300 Litres**

300 Litre 3-Point Linkage Complete with 22 L/min Pump, 3-way Bertolini Regulator and Gauge and PTO Shaft

SKU: PLG0300L0220



**\$5,760\***

**400 Litres**

400 Litre 3-Point Linkage Complete with 22 L/min Pump, 3-way Bertolini Regulator and Gauge and PTO Shaft

SKU: PLG0400L0220



**\$7,520\***

**600 Litres**

600 Litre 3-Point Linkage Complete with 75 L/min Pump, 3-way Arag Regulator and Gauge and PTO Shaft

SKU: PLG0600L0750



**\$8,210\***

**800 Litres**

800 Litre 3-Point Linkage Complete with 75 L/min Pump, 3-way Arag Regulator and Gauge and PTO shaft

SKU: PLG0800L0750



Scan to see  
this product  
in action!

**\$10,380\***

**1,000 Litres**

1000 Litre 3-Point Linkage Complete with 75 L/min Pump, 3-way Arag Regulator with Main Elec On/Off, Gauge and PTO Shaft

SKU: PLY1000L0750C0



# SPEC UP YOUR LINKON™

## 3-Point Linkage Professional Sprayers



SCAN TO SEE  
THIS PRODUCT  
IN ACTION!

### SELECT YOUR BOOM



**\$1,945\***

**4m Boom**

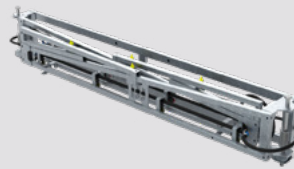
**Compact™ Steel Boom**  
SKU: ABM040



**\$2,580\***

**6m Boom**

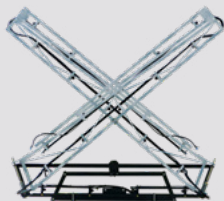
**Compact™ Steel Boom**  
SKU: ABM060



**\$3,190\***

**8m Boom**

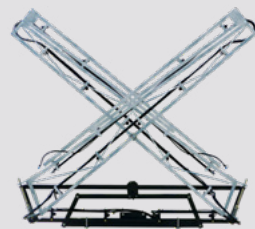
**Compact™ Steel Boom**  
SKU: ABM080



**\$5,520\***

**8m Boom**

**Pinnacle™ Self-Leveling  
Steel Boom**  
SKU: ABM080PS



**\$5,780\***

**10m Boom**

**Pinnacle™ Self-Leveling  
Steel Boom**  
SKU: ABM100PS



**\$5,935\***

**12m Boom**

**Pinnacle™ Self-Leveling  
Steel Boom**  
SKU: ABM120PS

### OTHER OPTIONS



**\$865\***

**30m Reel**

**30m Poly Hose Reel with Spray Gun**  
SKU: ATHW03X030M10G



**\$3,045\***

**Foam Marker**

**Double Sided Deluxe Foam Marker  
Kit Fitted**  
SKU: ATF0024DF



**\$3,605\***

**GPS System**

**TeeJet Matrix 430 Guidance System**  
SKU: ATCG0430



**\$533\***

**Main Elec On/Off**

**Main On/Off valve with 1 way switch box  
(for 600L, 800L, & 1000L)**





# SPRAY ACCESSORIES

Pumps

Booms

Guns

Nozzles

Reels

## Foam Marker Complete Kit - Double Sided

\$2,215\*

SKU: ATF0024D

- ◆ Double sided deluxe model with solenoid controls
- ◆ **In-cab controller** for left/right selection
- ◆ **24 Litre high strength poly tank** with safety valve
- ◆ Maximum **foam production 330 L/hr**
- ◆ Working **pressure 0.75 bar** at 12 volt DC
- ◆ Water/Foam **agent solution consumption 10.6 L/hr**
- ◆ **Foam spreader** made of flexible EPDM rubber to withstand accidental impacts & more...



## GPS Guidance System - Matrix 430

\$3,605\*

SKU: ATCG0430

### TeeJet Matrix 430

- ◆ GPS/GLONASS engine with ClearPath technology
- ◆ Easy to install and easy to operate
- ◆ Compact - install in front of the steering wheel for easy viewing during field operation
- ◆ Calculates field area, counts applied acres and produces Google Earth™ coverage maps
- ◆ Provides warning sound when entering into previously applied areas
- ◆ Cross-track error with user selectable displays for worked area, worked time & more...



## GPS Guidance - Matrix 570G

\$5,955\*

SKU: ATCG0570

### TeeJet Matrix 570G

- ◆ The Matrix Pro GS system can be used with up to eight RealView cameras
- ◆ The Matrix Pro 570GS console features a 14.5 cm (5.7") touch screen
- ◆ A+ Azimuth (degree heading) allows identical, parallel, guidelines when operating multiple vehicles in the same field
- ◆ Field Finder organizes saved jobs according to your current GPS location
- ◆ Easy-to-use PC utility simplifies creating and maintaining client/farm/field/job data & more...





# Remco

## 12v Pumps

TESTED | TRUSTED | CERTIFIED

- ✓ **High flow rate** with less amp draw
- ✓ **Longer duty cycle**
- ✓ **2000 Hour** life expectancy
- ✓ **12-Month** Warranty



### VARIANTS



**\$155\***

**3.8 L/min 40psi**

SKU: I-11805

PSI	LMP	AMPS
OPEN	3.79	1.75
20	2.84	2.25
40	2.27	3.00



**\$283\***

**4.5 L/min 60psi**

SKU: I-11353

PSI	LMP	AMPS
OPEN	4.55	3.50
20	3.98	4.50
40	3.60	5.25
60	3.03	5.50



**\$330\***

**8.3 L/min 100psi**

SKU: I-11355

PSI	LMP	AMPS
OPEN	8.33	2.65
20	7.38	4.40
40	6.06	5.80
60	5.49	6.70
80	5.11	7.10
100	3.79	8.00



**\$405\***

**11.4 L/min 60psi**

SKU: I-11347

PSI	LMP	AMPS
OPEN	11.75	4.00
20	8.72	6.00
40	7.20	8.00
60	5.50	9.50



**\$415\***

**15.1 L/min 100psi**

SKU: I-12572

PSI	LMP	AMPS
OPEN	17.24	4.00
20	14.21	6.00
40	11.56	8.00
60	9.29	9.50
80	8.34	10.50
100	7.20	11.75



**\$511\***

**20 L/min 60psi**

SKU: I-11354

PSI	LMP	AMPS
OPEN	20.09	8.00
20	18	11.00
40	14.59	15.00
60	11.37	18.00



**\$830\***

**26 L/min 100psi**

SKU: I-11796

PSI	LMP	AMPS
OPEN	26	11.00
20	24	12.00
40	20	15.00
60	16	19.00
80	13	23.00
100	9	25.00

# 12V PUMP PARTS & ACCESSORIES

## REMCO PUMP SPARES

SKU	DESCRIPTION	RRP*(\$)
3300-PSW	Pressure switch, Remco 3300 Series 60PSI	\$37
3300-PSW-100	Pressure switch, Remco 3300 Series, 100PSI	\$61
VHA7863-7F77	Valve Housing, Remco 3300 Series	\$84
PSW-580R-60	Pressure Switch, Remco 5500 Series, 60psi	\$61
VHA5513-1X77	Valve Housing, Remco 5500 Series	\$97

## DELAVAN PUMP SPARES

SKU	DESCRIPTION	RRP*(\$)
CDPLHA78607E77	Lower housing assy - for 7801 pumps; Diaphragm	\$102
CDPLHA78637F77	Lower housing assy - for 7800 pumps; Diaphragm	\$102
CDP53LHA002	Lower housing assy - for 7800 pumps; Geolast Diaphragm	\$161
CDPVHA78637F77	Valve housing assy for 7800 pumps	\$89
CDPUHA78637F77	Upper housing assy for 7800 pumps	\$89
CDPUHA78637F77T	Upper housing assy for 7812 pumps	\$89
CDP2200PSW	Pressure switch for 2200 pumps	\$26
CDP7800PSW60	Pressure switch to suit 7800 series pumps - 60psi	\$37
CDP7800PSW100	Pressure switch to suit 7800 series pumps - 100psi	\$50



SKU	DESCRIPTION	RRP*(\$)
CDP3DFE38X2	Quick Attach 10mm Elbow x 2 for 7800	\$23
CDP3DFA38X2	Quick Attach 10mm Straight x 2 for 7800	\$23
CDP5DFA38X2	Quick Attach 10mm Straight x 2 for 5900	\$30
CDP5DFE38X2	Quick Attach 10mm Elbow x 2 for 5900	\$30
CDP3DFE12X2	Quick Attach 12mm Elbow x 2 for 7800	\$23
CDP3DFA12X2	Quick Attach 12mm Straight x 2 for 7800	\$23
CDP5DFA12X2	Quick Attach 12mm Straight x 2 for 5900	\$30
CDP5DFE12X2	Quick Attach 12mm Elbow x 2 for 5900	\$30



### Quick Attach Filters

- Available in 2 sizes to suit Delavan and Remco pumps
- Stainless steel mesh filter
- Simple push in & lock fitting – no tools required

SKU	DESCRIPTION	RRP*(\$)
ATPFS050Q10	Quick attach filter for 7800 pumps	\$66
ATPFS050Q12	Quick attach filter for 5900 pumps (suits Remco Pumps)	\$66



### Quick Attach Regulator & Gauge

- Fitted standard to our professional spot sprayers
- Simple push in & lock fitting – no tools required
- Set & forget pressure control
- Excess fluid returns to tank & provides agitation

SKU	DESCRIPTION	RRP*(\$)
ATRM020LQ10G	Quick attach regulator & gauge for 7800 pumps	\$174
ATRM020LQ12G	Quick attach regulator & gauge for 5900 pumps (suits Remco Pumps)	\$174

### Wire Harness Kit

- 3.6 metre wire harness kit with on/off switch
- Power control switch & fuse protection included
- Easy quick connect 2-pin plugs
- Kit includes both lighter adapter and alligator clips
- Max 10 Amp draw



SKU	DESCRIPTION	RRP*(\$)
ATCWLO3612VSAC	Wire harness kit complete - 10 Amp	\$66



**BERTOLINI  
SPARE PARTS KITS**

SKU	DESCRIPTION	RRP*[\$]
CBK949879973	O-ring kit for Poly 2020	\$ 153
CBK949888973	SS valves kit for Poly 2020	\$ 160
CBK949871973	Diaphragm Kit - 20VF/RT4Poly2020 (Buna)	\$ 138
CBK039830973	Pump Seals Kit - PA330	\$ 157
CBK039850973	Valve Kit for PA330 (up to Nov 2004)	\$ 194
CBK039875973	Valve Kit for PA330.1 (from Dec 2004)	\$ 285
CBK039851973	Diaphragm Kit - PA330 (Buna)	\$ 138
CBK039873973	Diaphragm Kit - PA330 (Desmopan)	\$ 252

**BERTOLINI  
PUMP SPARE PARTS**

SKU	DESCRIPTION	RRP*[\$]
CBK639880973	Pump Seals Kit - Poly 73/2073	\$ 138
CBK639870973	Valve Kit - Poly 73/2073	\$ 455
CBK639871973	Diaphragm Kit - Poly 73/2073 (Buna)	\$ 180
CBK639873973	Diaphragm Kit - Poly 73/2073 (Desmopan)	\$ 343
CBK239880973	Valve Kit - PA530	\$ 327
CBK239829973	Valve Kit - PA530	\$ 530
CBK239828973	Buna Diaphragm Kit for PA530	\$ 183

\*GST included | Freight Rates Apply

Honda applied its superior engine technology to create the world's first 360° inclinable 4-Stroke engines. The ultra-lightweight GX35 Mini 4-Stroke efficiently delivers the kind of efficient cleaner, powerful, quiet performance that you'd expect from a larger engine – but in a very compact package.



Need it coupled to a  
**Honda GX200?**  
just add  
**\$1,465\***



**GX35 "Commando"**  
**\$2,090\***  
**12L/min Pump;**  
**30m Reel and Gun**  
SKU: APP0120GH030G



**22L/min Pump**

2 Diaphragms; 1 3/8" Shaft; 290psi/20bar  
Max Pressure; Weight: 6.6kg

**\$1,350\***

**\$1,780\***

**Bare Pump & Shaft**  
SKU: APL0220S

**Pump & Gear Box**  
SKU: APL0220KG



**34L/min Pump**

3 Diaphragms; 1 3/8" Shaft; 580psi/40bar  
Max Pressure; Weight: 8.3kg

**\$1,585\***

**\$2,195\***

**Bare Pump & Shaft**  
SKU: APL0340S

**Pump & Gear Box**  
SKU: APL0340KG



**54L/min Pump**

3 Diaphragms; 1 3/8" Shaft;  
580psi/40bar Max Pressure

**\$2,175\***

**\$2,785\***

**Bare Pump & Shaft**  
SKU: APL0540S

**Pump & Gear Box**  
SKU: APL0540KG



**75L/min Pump**

3 Diaphragms; 1 3/8" Shaft; 218psi/15bar  
Max Pressure; Weight: 11kg

**\$1,740\***

**\$2,505\***

**Bare Pump & Shaft**  
SKU: APL0750S

**Pump & Gear Box**  
SKU: APL0750KG



**126L/min Pump**

5 Diaphragms; 1 3/8" Shaft; 218psi/15bar  
Max Pressure; Weight: 12kg

**\$2,360\***

**Bare Pump & Shaft**  
SKU: APL1260S



**210L/min Pump**

3 Diaphragms; 1 3/8" Shaft; 218psi/15bar  
Max Pressure; Weight: 26kg

**\$4,910\***

**Bare Pump & Shaft**  
SKU: APL2100S

# SPRAY ACCESSORIES

## Bertolini Regulators

- ◆ 90 L/min flow rate
- ◆ Choose from 15 bar (218psi) and 40 bar (580psi) pressure ratings
- ◆ 3 Outlets with 10mm hose tails and ball valves
- ◆ Complete with pressure gauge and mounting bracket
- ◆ Accurate and progressive pressure selection
- ◆ Reliable pressure control
- ◆ 3-way fluid control



**\$ 600\***

**218psi**

**Sting 3-Way Regulator  
90L/min, 15 bar**  
SKU: ATRB15B09013M3K



**\$ 630\***

**580psi**

**Sting 3-Way Regulator  
90L/min, 40 bar**  
SKU: ATRB40B09013M3K

**Pressure Gauge**

**\$ 109\***

**ADD A GAUGE!**

**0-24 bar (340 psi)**  
SKU: CBP830010002



## Arag Regulators

- ◆ Polypropylene high capacity modular system with viton seals
- ◆ Main control lever shuts off flow completely - good for boom sprays
- ◆ Manual section valves can be replaced by CA463011S electric valves to give in cab control of boom sections.
- ◆ When ordering electric controllers select switch box to suit application



**\$ 830\***

**Arag Regulator  
3 Manual Section Valves;  
Manual On/Off**  
SKU: ATRA20B14013M3



**\$ 1,755\***

**Arag Regulator & Gauge  
3 Manual Section Valves; Elec  
On/Off**  
SKU: ATRA20B14023M3



**\$ 1,880\***

**Arag Regulator & Gauge  
2 section: 2 Electric; 1 Manual  
Section Valves; Electric On/Off**  
SKU: ATRA20B14023E2M1

## Switches & Cables

The Arag compact control box is an electric device that connected to a suitable control unit allows managing all spraying stages directly inside the agricultural vehicle cabin it is installed in.

- ◆ Models with 1, 2 and 4 output sections
- ◆ Available main valve control and pressure settings adjustment



**\$ 214\***

**1-Way On/Off Switch Box**  
SKU: ATCC1W



**\$ 297\***

**2-Way On/Off Switch Box**  
SKU: ATCC2W



**\$ 700\***

**3-Way & Main On/Off  
Switch Box with Pressure  
Control**  
SKU: ATCC3WV



**\$ 820\***

**5-Way & Main On/Off Switch  
Box with Pressure Control**  
SKU: ATCC5WVP



# SPRAY ACCESSORIES

## Filters

- ◆ keep your spray clear & clean!
- ◆ reduce nozzle blockage & protect your pump
- ◆ Quick attach suction filter designed to fit directly onto the female port of Delavan pumps, 80 mesh screen filter



**\$66\***  
Suction Filter

For 7800 Series Pumps  
SKU: ATPFS050Q10  
For 5900 Series Pumps  
SKU: ATPFS050Q12



**\$66\***  
1/2" Suction Filter (Threaded)

To Suit Shurflo Pumps  
SKU: ATPFS080T12



**\$182\***  
1 1/4" Suction Filter

25mm Hosetails  
SKU: ATPFSV032T32T



**\$213\***  
1 1/2" Suction Filter

32mm Hosetails  
SKU: ATPFSV038T38T

## Boom Spray Control

### Make Your Spraying Jobs Easier & Professional

- ◆ Heavy duty brass 1/2" BSP, 12VDC solenoid valves
- ◆ Suitable for most chemicals
- ◆ Viton diaphragm

Choose From 1-way or 3-way Solenoid Kits



**\$323\***  
1-Way Solenoid Valve Kit

10 bar (140psi) 3.6m Electrical Leads 1/2" BSP Port Solenoid  
SKU: ATVS10B036



**\$895\***  
3-Way Solenoid Valve Kit

10 bar (140psi) with 3 way switch box and cables 1/2" BSP port solenoid  
SKU: ATVS10BX3W

# Spray Hose

SAFE TO USE!  
UP TO 40 BAR

## Highly Flexible Spray Hose Great Value Kink Resistant Hose

- ◆ High quality TTI agricultural spray hose
- ◆ High flexibility, kink resistant
- ◆ Working pressure 40 bar (580 psi)
- ◆ Burst Pressure 150 bar (2200 psi)
- ◆ Suction hose available also - call for details
- ◆ Black ribbed outer cover with a specially formulated yellow chemical resistant tube
- ◆ 10mm & 12mm hose available in 100m rolls - Call for your price

## PRESSURE SPRAY HOSE

SKU	DESCRIPTION	RRP*(\$)
CUY58010MM	10mm Spray Hose (working pressure 40 bar; 580psi) / metre	\$12
CUY58010MMX10	10mm Spray Hose (working pressure 40 bar; 580psi) / 10 metre	\$96
CUY58012MM	12mm Spray Hose (working pressure 40 bar; 580psi) / metre	\$15
CUY58012MMX10	12mm Spray Hose (working pressure 40 bar; 580psi) / 10 metre	\$130
CUY58019MM	19mm Spray Hose (working pressure 40 bar; 580psi) / metre	\$31
CUY58025MM	25mm Spray Hose (working pressure 40 bar; 580psi) / metre	\$56

## SUCTION HOSE

SKU	DESCRIPTION	RRP*(\$)
CUUC19MM	19mm Clear Suction Hose (not for pressure lines) / metre	\$20
STAHSB25BLK	25mm Suction Hose (not for pressure lines) / metre	\$23
STAHSB32	32mm Suction Hose (not for pressure lines) / metre	\$28
STAHSB38	38mm Suction Hose (not for pressure lines) / metre	\$30



# POLY REELS

## Keep your hose Neat, Tidy & Protected with a TTI Reel!

- ◆ New stronger frame design
- ◆ Reel constructed from rust-free UV stabilised poly
- ◆ NEW ReelPro - Engineered Steel Design
- ◆ Hose Reel Optimised full flow ball bearing swivel – easier rewinding under pressure
- ◆ New positive reel locking device works in four positions to prevent hose unwinding in transit



**\$ 865\***

**30m Reel & Hose**

**Base Mount - 10mm Hose & Free Spray Gun**

SKU: ATHW03B030M10G

**\$ 865\***

**30m Reel & Hose**

**Side Mount - 30m Hose Reel w/ 10mm Hose & Free Spray Gun**

SKU: ATHW03X030M10G

**\$ 1,585\***

**100m Hose & Reel**

**Base Mount - for 10mm Hose and Spray Gun**

SKU: ATHW10B100M10G

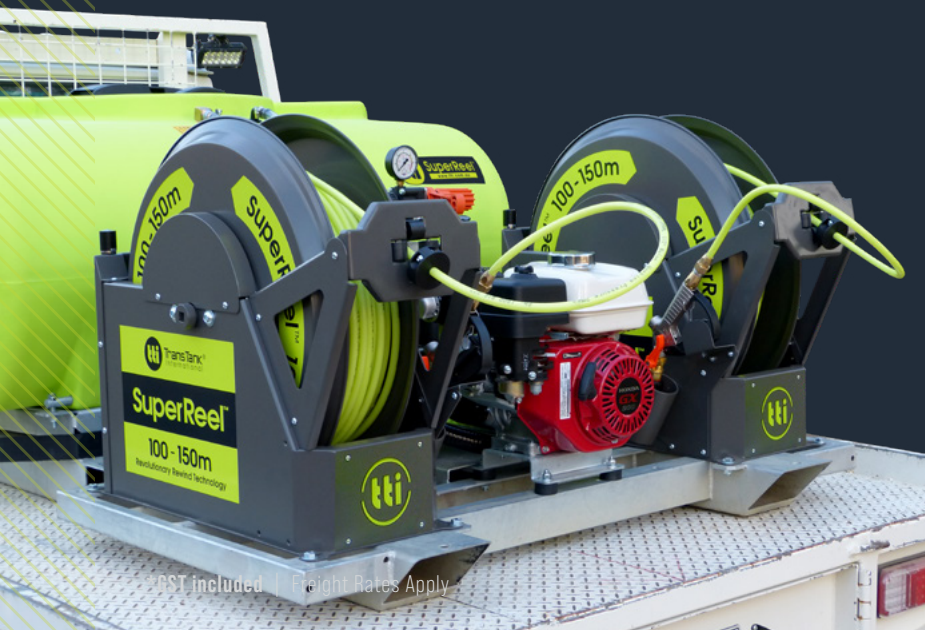


# SuperReel™

## Remote Controlled Rewind Hose Reel

Designed to perform in the toughest terrain, the remote controlled SuperReel™ spray reels are guaranteed to make the job quick, easy and safe for any operator.

- ◆ Powerful belt-driven 12v motor. Geared reduction for maximum torque and power efficiency
- ◆ 100m or 150m 10mm ID anti-kink nylon hose
- ◆ Hose roller guide allows for one-person operation, from any angle
- ◆ Manual override button for powered retraction, without the remote control
- ◆ Easy bolt-down points with tough powder-coated finish
- ◆ Wireless remote transmits up to 200m in uneven terrain!
- ◆ Interchangeable left/right spray gun holder
- ◆ Turbo 400 spray gun (optional accessory)



\$ 3,760\*

**50m**

Auto-Rewind Reel  
600 x 355 x 450mm (LWH)

SKU: ATHR050M10-R



\$ 5,135\*

**100m**

Auto-Rewind Reel  
810 x 355 x 675mm (LWH)

SKU: ATHR100M10



\$ 5,515\*

**150m**

Auto-Rewind Reel  
810 x 355 x 675mm (LWH)

SKU: ATHR150M10



SCAN TO SEE  
THIS PRODUCT  
IN ACTION!

# SPRAY ACCESSORIES - HOME GARDEN SPRAY LANCES

Add any of these to your versatile or telescopic lances

## Versatile Lance

- Lightweight all-purpose lance
- Virtually unbreakable shaft
- Adjustable spray nozzle
- Overall length: 760mm
- Maximum pressure: 10 bar
- Choose from a large range of compatible accessories
- 10mm hoesetail



**\$76\***

**Versatile Lance**

with 10mm Hose Tail  
SKU: AHL002T

**\$17\***

**Nozzle Replacement**

SKU: CGP726

## Economy Lance

- Lightweight chromed aluminium
- Adjustable spray nozzle
- Filter in handle
- 10mm hose barb connection
- 850mm overall length



**\$51\***

**Economy Lance**

with 10mm Hose Barb  
Length: 850mm  
SKU: AHL009

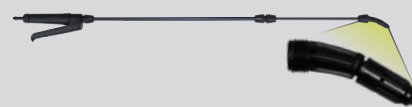
**\$16\***

**Nozzle Replacement**

SKU: CPLP009N

## Telescopic Lance

- Lightweight lance with long reach for trees and bushes
- Very easily adjusted
- Maximum pressure: 10 bar (145 psi)
- Overall length: from 710 to 1150mm
- Compatible with Inter accessories as shown
- 10mm hoesetail



**\$117\***

**Telescopic Lance**

with 10mm Hose Tail  
Length: 760mm  
SKU: AHL003T

**\$17\***

**Nozzle Replacement**

SKU: CGP726

## Spray Booms

- Three boom types to choose from to speed up your ground coverage.
- Lightweight for ease of use.



**\$87\***

**Telescopic Lance**

Nozzle Boom  
SKU: ATA00RF

**\$118\* / \$135\***

**Quadruple Nozzle Boom**

with Cone/Fan Spray Nozzles 1.5m  
SKU: ATA00EC (CONE) / ATA00EF (FAN)

## Spray Hoods

- Hit your target every time without collateral damage, with the Inter Elite Spray Hoods.



**\$43\***

**Conical Hood**

SKU: ATA00C



**\$54\***

**Rectangular Hood**

SKU: ATA00B

## Herbicide Nozzles

- Consistent application rates for band spraying



**\$51\***

**Elbow**

With low volume

SKU: ATA00G



**\$31\***

**Elbow**

with fan nozzle

SKU: ATA00F

## Spray Hoods

Tubes can be manually moulded for specialised spraying requirements.

Two models available, one with adjustable cone nozzles and one with fan nozzles.

Used for basal bark spraying and ant block treatments.



**\$66\* / \$80\***

**Flexible Double Nozzle**

Adjustable Cone/Fan Spray Nozzles

SKU: ATA00HC (CONE) / ATA00HF (FAN)



# SPRAY ACCESSORIES - SPRAY GUNS

## Heavy Duty Pistol Grip

- ◆ All metal construction – stainless steel, aluminium & brass
- ◆ High pressure, long range spray gun
- ◆ Teflon seal
- ◆ Overall Length: 180mm
- ◆ Easily adjustable spray pattern
- ◆ Max. pressure: 55 bar (800psi)
- ◆ Max. flow: 15 L/min (580psi) with 3mm nozzle



**\$ 261\***

**Pistol Grip Spray Gun**

SKU: AHG104ST

### KITS

**REPAIR KIT - CPLK104R  
NUT & WASHER**

FOR NOZZLE - CPLP104N  
1.5MM NOZZLE - CPLP104N15  
2.0MM NOZZLE - CPLP104N20  
2.5MM NOZZLE - CPLP104N25  
3.0MM NOZZLE - CPLP104N30  
3.5MM NOZZLE - CPLP104N35  
4.0MM NOZZLE - CPLP104N40

## Spot 300 Lance

- ◆ Heavy Duty Spot Spray Gun
- ◆ Trigger adjustable spray pattern with lock
- ◆ Max pressure: 40 bar (580psi)
- ◆ Overall length: 300mm



**\$ 269\***

**Spot 300 Lance**

SKU: AHG105ST

### KITS

**REPAIR KIT - CPLK105R  
NUT & WASHER**

5MM NOZZLE - CPLP105N15  
2.3MM NOZZLE - CPLP105N23

## Top Gun

- ◆ High pressure, long range, multipurpose spray gun
- ◆ Front handgrip allows quick spray pattern selection
- ◆ Fitted with trigger lock and ½" swivel inlet
- ◆ Overall length: 700mm
- ◆ Max range: 25m @ 50bar
- ◆ Max pressure: 60 bar (870psi)
- ◆ Max flow rate: 135 L/min



**\$ 397\***

**Top Gun**

SKU: AHG107ST

### KITS

**REPAIR KIT - CPLK107R  
2.3MM NOZZLE - CPLP107N23**

## KEEP YOUR PLANTS SAFE!

**Add a Spray Hood for  
Target Spraying**

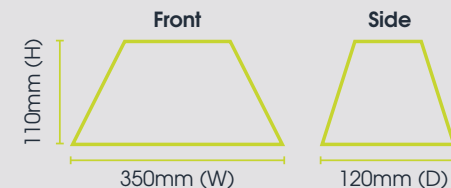
**\$ 92\***

**Rectangular Spray Shield Kit**

SKU: ATPS001



**Rectangular  
Spray Shield  
Kit to suit  
Powerjet  
Spray Gun**

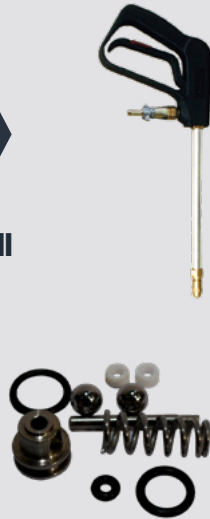


# SPRAY ACCESSORIES - SPRAY GUNS

## PowerJet Spray Guns

Simple & effective operating system using stainless steel ball & seat & brass housing

- ◆ Durable, dependable spray gun for all spraying applications
- ◆ Adjustable spray nozzle
- ◆ Maximum pressure: 20Bar 300psi
- ◆ Fitted with hose swivel



**\$191\***  
**Regular Lance**  
 Overall length: 475mm  
 SKU: AHG109ST

**\$37\***  
**Repair Kit PowerJet**  
 SKU: CPLK108R

**\$191\***  
**Standard Lance**  
 Overall length: 700mm  
 with 10mm Hose Tail  
 SKU: AHG110ST

**\$218\***  
**Long Lance**  
 Overall length: 840mm  
 with 10mm Hose Tail  
 SKU: AHG111ST



## RapidJet Spray Gun



- ◆ Ergonomic spray gun with long reach
- ◆ Easily adjustable brass nozzle for a variety of spray patterns
- ◆ Maximum pressure: 17 bar (250 psi)
- ◆ Max. flow rate: 26 L/min
- ◆ Overall length: 740mm
- ◆ 10mm hose barb

**\$129\***  
**RapidJet Spray Gun**  
 SKU: AHG112T

## Turbo Spray Gun



- ◆ Great value multipurpose spray gun
- ◆ One hand operation for easy pattern adjustment + on/off trigger
- ◆ Adjustable turbo atomiser
- ◆ Supplied with 10mm hose tail
- ◆ Max pressure 360psi
- ◆ Overall length 445mm

**\$129\***  
**Turbo Spray Gun**  
 SKU: AHG101T

### KITS

- REPAIR KIT**  
 SKU: CPLK102R  
 2.3MM CERAMIC NOZZLE  
 SKU: CPLP102N23  
 3.5MM CERAMIC NOZZLE  
 SKU: CPLP102N35





# SPRAY ACCESSORIES - SPRAY GUNS



## Turbo 400 Spray Gun

- ◆ Professional multipurpose spray gun with Viton seals
- ◆ One hand operation for easy pattern adjustment and on/off trigger
- ◆ Adjustable turbo atomiser
- ◆ Comes with swivel & 10mm hose tail
- ◆ Max pressure: 50 bar (725psi)
- ◆ Overall length: 400mm

**\$ 213\***

### Turbo 400 Spray Gun

SKU: AHG102ST

#### KITS

REPAIR KIT  
SKU: CPLK102R

2.3MM CERAMIC NOZZLE  
SKU: CPLP102N23  
3.5MM CERAMIC NOZZLE  
SKU: CPLP102N35



## Multi-Purpose Spray Gun

- ◆ Professional multipurpose high pressure spray gun with Viton seals
- ◆ Adjustable turbo atomiser for full range of spray requirements from straight stream to soft atomised cone spray position
- ◆ Metal handle & trigger guard favoured by many operators
- ◆ Swivel & 10mm hose tail supplied
- ◆ Max pressure: 50 bar (725psi)
- ◆ Overall length: 400mm

**\$ 253\***

### Multi-Purpose Spray Gun

SKU: AHG103ST

#### KITS

REPAIR KIT  
SKU: CPLK102R



# SPRAY ACCESSORIES - SPRAY BOOMS

For Firebreaks, Rough Country Spraying & Locust Control

## Brass Boomless Nozzle Kits

Ideal for Blanket Spraying



### FEATURES

- ◆ 4 sizes to choose from
- ◆ Use with ATV, 3PL or ute sprayers
- ◆ Can be used as 180° swath or 90° swath by swapping nozzle plates
- ◆ Ideal for rough country spraying & locust control
- ◆ Optimum mounting height between 0.5m & 1.0m above ground



**\$ 234\***

**7m (37L/hect)**

**7m Spray Width**  
Minimum Pump Capacity 7L/min  
SKU: ABK02

**\$ 303\***

**16m (147L/hect)**

**16m Spray Width**  
Minimum pump capacity 20 L/min  
SKU: ABK10

**\$ 247\***

**15m (74L/hect)**

**15m Spray Width**  
Minimum pump capacity 11L/min  
SKU: ABK05

**\$ 329\***

**17m (190L/hect)**

**17m Spray Width**  
Minimum pump capacity 30 L/min  
SKU: ABK20



**\$ 313\***

**Mounting Bracket**

**Goose Neck (Only)**  
**Fits any 50mm Haymen**  
**Reese Tow Hitch; Compatible**  
**with Boomless Nozzle**

## BoomJet™ Nozzle

Boomless Brass Nozzle

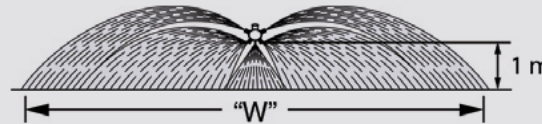


**\$ 705\***

**BoomJet**

**Boomless Brass Nozzle;**  
**0.91kg**

SKU: SEE TABLE



**BoomJet NOZZLES** W= Maximum effective coverage with nozzle mounted at 1m height

	(2)	(2)	(1)		bar	l/min	"W" (meters)
ABJ006	6733-OC06	H1/4VV-1506	H1/4VVL-9502 with 50 mesh strainer		1.5 2.0 2.5	7.26 8.38 9.37	10.2 10.3 10.5
ABJ010	OC10	H1/4U-0508HE	H1/4VVL-11004 with 50 mesh strainer		1.5 2.0 2.5	11.16 12.89 14.41	12.0 12.1 12.3
ABJ020	OC20	H1/4U-0520HE	H1/4VVL-9506 with 50 mesh strainer		1.5 2.0 2.5	24.00 27.72 30.99	14.3 15.2 15.8
ABJ040	OC40	H1/4U-0540HE	H1/4U-9510		1.5 2.0 2.5	47.44 54.78 61.25	17.1 18.2 19.2

Notes: Always double check your application rates.  
Tabulations are based on spraying water at 70°F (21°C).

## BoomTech™ Nozzle

Tail Gate Mounted Nozzle Kit

**\$ 540\***

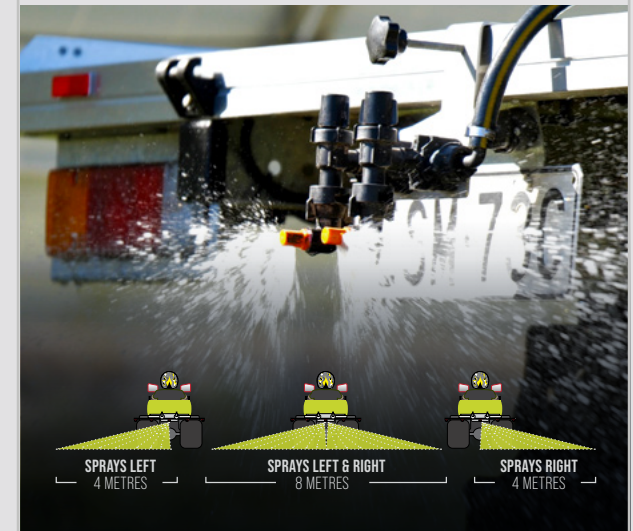
**BoomTech**

**BoomTech Nozzle Kit**

SKU: ABT001



- ◆ Universal Stainless Steel Tailgate Mounting Bracket
- ◆ Ideal for fence lines, orchard, blanket and end row spraying
- ◆ Excellent Drift Control
- ◆ Min Pump Capacity Required: 11.4L/min
- ◆ Recommended spray pressure range: 20-60 PSI (1.5-4 bar)



SPRAYS LEFT  
4 METRES

SPRAYS LEFT & RIGHT  
8 METRES

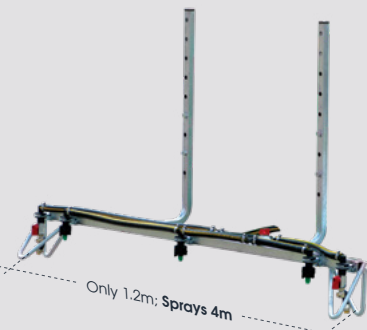
SPRAYS RIGHT  
4 METRES



# SPRAY ACCESSORIES - SPRAY BOOMS

## Versatile Boom

- ◆ 1.2 metre compact boom
- ◆ Sprays 4 metre swath width
- ◆ Compatible with any spot sprayer with pump - 6.5 L/min or more
- ◆ Taps for 7-way nozzle control
- ◆ Versatility of spraying options



**\$650\***

**4m Boom**

Sprays up to 4 metres

SKU: ABVL040



**\$895\***

**4m Boom**

Haymen Reese Goose neck attachment  
with Versatile Boom

SKU: ABVL040-GN

## Economy Booms



**\$197\***

**2 Metre Boom**

2m Spray width

SKU: ABS020



**\$465\***

**3 Metre Boom**

3m Spray width

SKU: ABS030



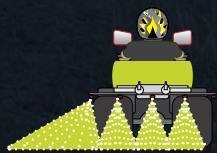
**\$545\***

**4 Metre Boom**

4m Spray width

SKU: ABS040

## Versatile Boom Spray Selections

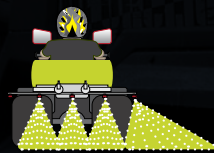


JETS LEFT & CENTER



JETS LEFT, RIGHT & CENTER

4 METRES



JETS RIGHT & CENTER



JETS LEFT



JETS LEFT & RIGHT



JETS RIGHT



JETS CENTER ONLY

# Compact™

Compact Galvanised Spray Boom



**NEW & IMPROVED**

**DESIGN**

- ✓ Very easy to fold/unfold for spraying and traveling positions
- ✓ Spring-loaded breakaway with nozzle protection
- ✓ Non-drip nozzle bodies with TeeJet AIXR Air Induction spray tips
- ✓ Easy to mount onto your existing sprayer!

**Fitted with  
TeeJet Air Induction Nozzles**

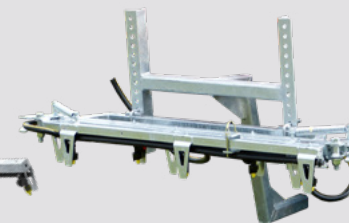


**\$1,945\***

**4m Boom**

Galvanised Boom with  
Nozzle Protection

SKU: ABM040



**\$2,135\***

**4m Boom with Goose Neck**

4m Folding Boom with  
Hayman Reece Attachment

SKU: ABM040-GN

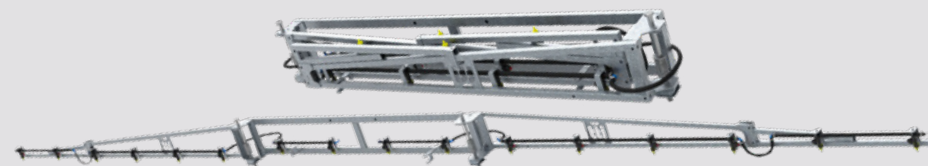


**\$2,580\***

**6m Boom**

Galvanised Boom with Nozzle Protection

SKU: ABM060



**\$3,190\***

**8m Boom**

Galvanised Boom with Nozzle Protection

SKU: ABM080



# Pinnacle™ 'Plus'

Galvanised Spray Boom with Self Level



- ✓ Self-levelling booms allows boom to ride smoothly over uneven terrain
- ✓ Breakaway boom with nozzle protection
- ✓ Non drip nozzle bodies with Teejet AIXR Air Induction spray tips
- ✓ Easy to mount onto your existing sprayer!
- ✓ Hot dipped galvanised steel framework
- ✓ Optional upgrade to Tri-nozzle bodies

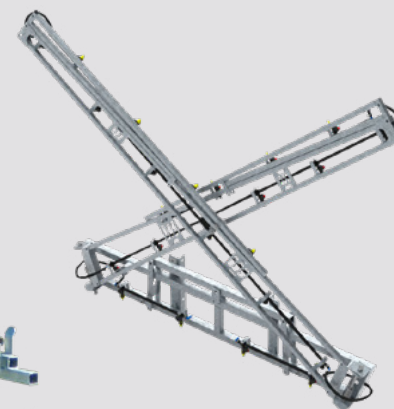


**\$ 5,520\***

**8m Boom**

**Galvanised Boom with Self-levelling Kit**

SKU: ABM080PS



**\$ 5,780\***

**10m Boom**

**Galvanised Boom with Self-levelling Kit**

SKU: ABM100PS



**\$ 5,935\***

**12m Boom**

**Galvanised Boom with Self-levelling Kit**

SKU: ABM120PS



# XR

## Air Induction



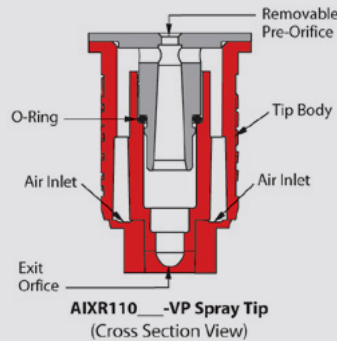
### Flat Spray Tips

**110° wide, tapered flat spray angle** with air induction technology offers better drift management

Made of a **two piece UHMWPE polymer construction with VisiFlo®** colour-coding. UHMWPE provides excellent chemical resistance, including acids, exceptional wear life

Depending on the chemical, produces large air-filled drops through a **Venturi air aspirator**

Available in **seven tip capacities** with a wide operating pressure range: **15–90 PSI** (1–6 bar)



SKU	DESCRIPTION	COLOUR	RRP*(\$)
CNSAIXR110015X10			\$ 191*
CNSAIXR110020X10			\$ 191*
CNSAIXR110025X10			\$ 191*
CNSAIXR110030X10			\$ 191*
CNSAIXR110040X10			\$ 191*
CNSAIXR110050X10			\$ 191*
CNSAIXR110060X10			\$ 191*

### Air induction XR Flat Spray Tips

(PACK of 10)

Icon	Pressure (bar)	DROP SIZE	CAPACITY ONE NOZZLE IN l/min	I/ha  50cm												
				4 km/h	5 km/h	6 km/h	7 km/h	8 km/h	10 km/h	12 km/h	16 km/h	18 km/h	20 km/h	25 km/h	30 km/h	35 km/h
	1.0	XC	0.34	102	81.6	68.0	58.3	51.0	40.8	34.0	25.5	22.7	20.4	16.3	13.6	11.7
	2.0	VC	0.48	144	115	96.0	82.3	72.0	57.6	48.0	36.0	32.0	28.8	23.0	19.2	16.5
	3.0	C	0.59	177	142	118	101	88.5	70.8	59.0	44.3	39.3	35.4	28.3	23.6	20.2
	4.0	C	0.68	204	163	136	117	102	81.6	68.0	51.0	45.3	40.8	32.6	27.2	23.3
	5.0	M	0.76	228	182	152	130	114	91.2	76.0	57.0	50.7	45.6	36.5	30.4	26.1
	6.0	M	0.83	249	199	166	142	125	99.6	83.0	62.3	55.3	49.8	39.8	33.2	28.5
	1.0	XC	0.46	138	110	92.0	78.9	69.0	55.2	46.0	34.5	30.7	27.6	22.1	18.4	15.8
	2.0	VC	0.65	195	156	130	111	97.5	78.0	65.0	48.8	43.3	39.0	31.2	26.0	22.3
	3.0	C	0.79	237	190	158	135	119	94.8	79.0	59.3	52.7	47.4	37.9	31.6	27.1
	4.0	C	0.91	273	218	182	156	137	109	91.0	68.3	60.7	54.6	43.7	36.4	31.2
	5.0	C	1.02	306	245	204	175	153	122	102	76.5	68.0	61.2	49.0	40.8	35.0
	6.0	M	1.12	336	269	224	192	168	134	112	84.0	74.7	67.2	53.8	44.8	38.4
	1.0	XC	0.57	171	137	114	97.7	85.5	68.4	57.0	42.8	38.0	34.2	27.4	22.8	19.5
	2.0	XC	0.81	243	194	162	139	122	97.2	81.0	60.8	54.0	48.6	38.9	32.4	27.8
	3.0	VC	0.99	297	238	198	170	149	119	99.0	74.3	66.0	59.4	47.5	39.6	33.9
	4.0	C	1.14	342	274	228	195	171	137	114	85.5	76.0	68.4	54.7	45.6	39.1
	5.0	C	1.28	384	307	256	219	192	154	128	96.0	85.3	76.8	61.4	51.2	43.9
	6.0	C	1.40	420	336	280	240	210	168	140	105	93.3	84.0	67.2	56.0	48.0
	1.0	XC	0.68	204	163	136	117	102	81.6	68.0	51.0	45.3	40.8	32.6	27.2	23.3
	2.0	XC	0.96	288	230	192	165	144	115	96.0	72.0	64.0	57.6	46.1	38.4	32.9
	3.0	VC	1.18	354	283	236	202	177	142	118	88.5	78.7	70.8	56.6	47.2	40.5
	4.0	C	1.36	408	326	272	233	204	163	136	102	90.7	81.6	65.3	54.4	46.6
	5.0	C	1.52	456	365	304	261	228	182	152	114	101	91.2	73.0	60.8	52.1
	6.0	C	1.67	501	401	334	286	251	200	167	125	111	100	80.2	66.8	57.3
	1.0	XC	0.91	273	218	182	156	137	109	91.0	68.3	60.7	54.6	43.7	36.4	31.2
	2.0	XC	1.29	387	310	258	221	194	155	129	96.8	86.0	77.4	61.9	51.6	44.2
	3.0	VC	1.58	474	379	316	271	237	190	158	119	105	94.8	75.8	63.2	54.2
	4.0	VC	1.82	546	437	364	312	273	218	182	137	121	109	87.4	72.8	62.4
	5.0	C	2.04	612	490	408	350	306	245	204	153	136	122	97.9	81.6	69.9
	6.0	C	2.23	669	535	446	382	335	268	223	167	149	134	107	89.2	76.5
	1.0	XC	1.14	342	274	228	195	171	137	114	85.5	76.0	68.4	54.7	45.6	39.1
	2.0	XC	1.61	483	386	322	276	242	193	161	121	107	96.6	77.3	64.4	55.2
	3.0	XC	1.97	591	473	394	338	296	236	197	148	131	118	94.6	78.8	67.5
	4.0	VC	2.27	681	545	454	389	341	272	227	170	151	136	109	90.8	77.8
	5.0	C	2.54	762	610	508	435	381	305	254	191	169	152	122	102	87.1
	6.0	C	2.79	837	670	558	478	419	335	279	209	186	167	134	112	95.7
	1.0	XC	1.37	411	329	274	235	206	164	137	103	91.3	82.2	65.8	54.8	47.0
	2.0	XC	1.94	582	466	388	333	291	233	194	146	129	116	93.1	77.6	66.5
	3.0	XC	2.37	711	569	474	406	356	284	237	178	158	142	114	94.8	81.3
	4.0	VC	2.74	822	658	548	470	411	329	274	206	183	164	132	110	93.9
	5.0	C	3.06	918	734	612	525	459	367	306	230	204	184	147	122	105
	6.0	C	3.35	1005	804	670	574	503	402	335	251	223	201	161	134	115

Note: Always double check your application rates. Tabulations are based on spraying water at 70°F (21°C).





# VISIFLO

## Air Induction



### Angle Flat Spray Tips

**Tapered edge wide angle flat spray pattern** for uniform coverage in broadcast spraying. Large, **rounded internal passage** to minimize clogging.

Excellent **resistance to corrosive solutions**

**Superior wear** characteristics

**Larger droplets** for less drift; **15–90 PSI** (1–6 bar)

## Applications

Herbicides, fungicides and insecticides

SKU	DESCRIPTION	COLOUR	RRP*(\$)
CNSTT110010X10	Turbo TeeJet Angle Flat Spray Tips  (PACK of 10)		\$ 174*
CNSTT110015X10			\$ 174*
CNSTT110020X10			\$ 174*
CNSTT110025X10			\$ 174*
CNSTT110030X10			\$ 174*
CNSTT110040X10			\$ 174*
CNSTT110050X10			\$ 174*
CNSTT110060X10			\$ 174*
CNSTT110080X10			\$ 174*

	bar	DROP SIZE	CAPACITY ONE NOZZLE IN l/min
TT11001 (100)	1.0	C	0.23
	2.0	M	0.32
	3.0	F	0.39
	4.0	F	0.45
	5.0	F	0.50
	6.0	F	0.55
TT110015 (100)	1.0	C	0.34
	2.0	M	0.48
	3.0	M	0.59
	4.0	M	0.68
	5.0	F	0.76
	6.0	F	0.83
TT11002 (50)	1.0	C	0.46
	2.0	C	0.65
	3.0	M	0.79
	4.0	M	0.91
	5.0	M	1.02
	6.0	F	1.12
TT110025 (50)	1.0	VC	0.57
	2.0	C	0.81
	3.0	M	0.99
	4.0	M	1.14
	5.0	M	1.28
	6.0	M	1.40
TT11003 (50)	1.0	VC	0.68
	2.0	C	0.96
	3.0	C	1.18
	4.0	M	1.36
	5.0	M	1.52
	6.0	M	1.67
TT11004 (50)	1.0	XC	0.91
	2.0	C	1.29
	3.0	C	1.58
	4.0	C	1.82
	5.0	M	2.04
	6.0	M	2.23
TT11005 (50)	1.0	XC	1.14
	2.0	VC	1.61
	3.0	C	1.97
	4.0	C	2.27
	5.0	C	2.54
	6.0	M	2.79
TT11006 (50)	1.0	XC	1.37
	2.0	VC	1.94
	3.0	C	2.37
	4.0	C	2.74
	5.0	C	3.06
	6.0	M	3.35
TT11008 (50)	1.0	XC	1.82
	2.0	VC	2.58
	3.0	C	3.16
	4.0	C	3.65
	5.0	C	4.08
	6.0	M	4.47

# TURBO

## 2, 4 - D Compliant



### Twin Flat Spray Tips

**110° wide angle**, air induction, **tapered flat spray tip pattern** based on the **patented outlet orifice design** of the original **Turbo TeeJet® nozzle**

**Patented orifice design** provides large, round passages to minimize plugging.

Depending on the chemical, produces large air-filled drops through a **Venturi air aspirator** resulting in less drift

## Applications

Herbicides, fungicides and insecticides

SKU	DESCRIPTION	COLOUR	RRP*(\$)
TT110015-VPX10	Turbo TeeJet  (PACK of 10)		\$ 225*
TT11002-VPX10			\$ 225*
TT110025-VPX10			\$ 225*
TT11003-VPX10			\$ 225*
TT11004-VPX10			\$ 225*

	PSI	DROP SIZE	CAPACITY ONE NOZZLE IN GPM	CAPACITY ONE NOZZLE IN OZ./MIN.
TT110015 (100)	15	UC	0.092	12
	20	UC	0.11	14
	30	UC	0.13	17
	40	UC	0.15	19
	50	UC	0.17	22
	60	XC	0.18	23
	70	XC	0.20	26
	80	XC	0.21	27
	90	XC	0.23	29
	100	XC	0.24	31
TT11002 (50)	15	UC	0.12	15
	20	UC	0.14	18
	30	UC	0.17	22
	40	UC	0.20	26
	50	UC	0.22	28
	60	XC	0.24	31
	70	XC	0.26	33
	80	XC	0.28	36
	90	XC	0.30	38
	100	XC	0.32	41
TT110025 (50)	15	UC	0.15	19
	20	UC	0.18	23
	30	UC	0.22	28
	40	UC	0.25	32
	50	UC	0.28	36
	60	XC	0.31	40
	70	XC	0.33	42
	80	XC	0.35	45
	90	XC	0.38	49
	100	XC	0.40	51
TT11003 (50)	15	UC	0.18	23
	20	UC	0.21	27
	30	UC	0.26	33
	40	UC	0.30	38
	50	UC	0.34	44
	60	XC	0.37	47
	70	XC	0.40	51
	80	XC	0.42	54
	90	XC	0.45	58
	100	XC	0.47	60
TT11004 (50)	15	UC	0.24	31
	20	UC	0.28	36
	30	UC	0.35	45
	40	UC	0.40	51
	50	UC	0.45	58
	60	UC	0.49	63
	70	XC	0.53	68
	80	XC	0.57	73
	90	XC	0.60	77
	100	XC	0.63	81
TT11005 (50)	15	UC	0.31	40
	20	UC	0.35	45
	30	UC	0.43	55
	40	UC	0.50	64
	50	UC	0.56	72
	60	UC	0.61	78
	70	XC	0.66	84
	80	XC	0.71	91
	90	XC	0.75	96
	100	XC	0.79	101
TT11006 (50)	15	UC	0.37	47
	20	UC	0.42	54
	30	UC	0.52	67
	40	UC	0.60	77
	50	UC	0.67	86
	60	UC	0.73	93
	70	XC	0.79	101
	80	XC	0.85	109
	90	XC	0.90	115
	100	XC	0.95	122









# DIESEL

REFUELING  
EQUIPMENT



# DieselSergeant™

Low-Profile Diesel Refueling Units

## The Reason to Say GoodBye to Jerry Cans!

The low-profile, compact DieselSergeant™ is a simple yet effective diesel refueling tank. The pump is mounted on a sturdy 'squat' tank, with a large lid for easy access to the tank.

Pin-mounting provisions make it easy to secure to tank for safe transportation.

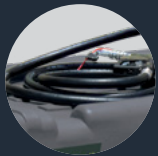
### KEY FEATURES



Reliable 40L/min Transfer40™ Pump with integrated Bypass



Auto Shut-off Nozzle Prevents Overfilling and Fuel Wastage



4 Metres of Delivery Hose



Lockable Filler Cap for Security

Fits Where Others Don't!

Low Profile, Space Saver Design



40L/min Pump

\$1,430\*

220 Litres

SKU: DSU0220LD040V1

\$1,660\*

400 Litres

SKU: DSU0400ALD040V1





# DieselMajor™

with Honda GX50 Petrol Pump

The DieselMajor™ lives up to its name, as the big boy of portable diesel tanks.

The DieselMajor™ will take charge of your onsite diesel refueling, with a 10m retractable reel and high flow pump making your refueling task a breeze.

## KEY FEATURES



Genuine Honda GX50 coupled with 210L/min Pump (Max Flow 120lpm with Nozzle)



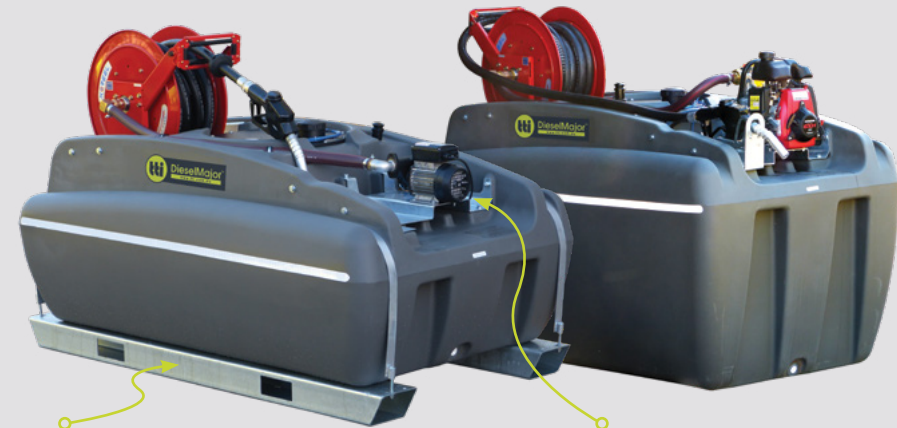
Spring Retractable Reel with 10m x 25mm Hose



Provision For Tie Down Straps To Securely Fasten Tank Onto Your Vehicle



Fitted LiquidLocker™ Baffle System



Note: Steel Frame as optional upgrade

12v Pump Options Available

### 210 L/min Pump, 10m Reel

\$6,005*	\$6,295*	\$6,515*
<b>600</b> Litres	<b>800</b> Litres	<b>1,000</b> Litres
SKU: DUCD0600LHB210	SKU: DUCD0800LHB210	SKU: DUCD1000LHB210





# DieselCaptain™

Portable Diesel Tanks

**Experience**

**Hassle-Free Refueling**

**The Internationally Certified DieselCaptain™ is your ultimate and reliable refueling partner!**

This range of poly diesel fuel tanks are equipped with world-class pumps, hoses and auto shut off nozzles, so you can be assured your diesel refueling is done quickly and efficiently.



**25-YEAR TANK WARRANTY**



**INCORPORATED LIFTING HANDLES**



# DIESELCAPTAIN™

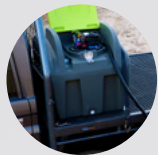
Portable Diesel Tanks



SCAN TO SEE THIS PRODUCT IN ACTION!



## KEY FEATURES



Heavy-duty Roto-molded Tank with Integrated Lifting Handles



Protected Tank Breather System & Anti-static Earth Strap



Fitted with High-flow Piusi or Transfer40 12v Diesel Pumps with 4m Battery Cables



3/4" or 1" Auto Shut Off Nozzle



6m (Piusi) or 4m (Transfer40) Anti-kink Delivery Hose



Double-hinged Lock-able Pump Cover Provides Pump Protection

## DID YOU KNOW?



All DieselCaptain™ tanks are **moulded with our unique aluminium lid mounting ring** for incredible strength!

This **unique multi-seal system** keeps the moisture out and your diesel in!

# DIESELCAPTAIN™

## Portable Diesel Tanks



Fitted with: ✓ 40L/min Transfer40 or 50L/min Piusi Pumps    ✓ Auto Shut-Off Nozzle    ✓ 4m Electrical Leads with Alligator Clips    ✓ Delivery Hose



### 100 Litres

800 x 680 x 465mm (LWH) (Standard)

40L/min 12v Transfer40 Pump  
SKU: DULO100LD040V1

50L/min 12v Piusi Pump  
SKU: DULO100LF045V1

**\$1,350\***

**\$1,680\***

★ Steel Mounting Frame **\$615\*** SKU: ASFD00100



### 200 Litres

1150 x 820 x 565mm (LWH) (Low-Profile)

40L/min 12v Transfer40 Pump  
SKU: DULO200LD040V1

50L/min 12v Piusi Pump  
SKU: DULO200LF045V1

**\$1,490\***

**\$1,840\***

★ Steel Mounting Frame **\$615\*** SKU: ASFD00200



### 200 Litres

800 x 680 x 710mm (LWH) (Space Saver)

40L/min 12v Transfer40 Pump  
SKU: DULO200ALD040V1

50L/min 12v Piusi Pump  
SKU: DULO200ALF045V1

**\$1,490\***

**\$1,840\***

★ Steel Mounting Frame **\$615\*** SKU: ASFD00100



### 300 Litres

1270 x 600 x 790mm (LWH) (Slim)

40L/min 12v Transfer40 Pump  
SKU: DULO300ALD040V1

50L/min 12v Piusi Pump  
SKU: DULO300ALF045V1

**\$1,780\***

**\$2,150\***

★ Steel Mounting Frame **\$800\*** SKU: ASFD00400



### 400 Litres

1270 x 600 x 990mm (LWH) (Slim)

40L/min 12v Transfer40 Pump  
SKU: DULO400ALD040V1

50L/min 12v Piusi Pump  
SKU: DULO400ALF045V1

**\$1,890\***

**\$2,270\***

★ Steel Mounting Frame **\$800\*** SKU: ASFD00400



### 400 Litres

1150 x 820 x 780mm (LWH) (Standard)

40L/min 12v Transfer40 Pump  
SKU: DULO400LD040V1

50L/min 12v Piusi Pump  
SKU: DULO400LF045V1

**\$1,890\***

**\$2,270\***

★ Steel Mounting Frame **\$615\*** SKU: ASFD00200



# DIESELCAPTAIN™

## Portable Diesel Tanks



SCAN TO SEE THIS PRODUCT IN ACTION!

Fitted with: 50L/min Piusi or 60L/min Fluid Pumps Auto Shut-Off Nozzle 4m Electrical Leads with Alligator Clips Delivery Hose



### 440 Litres

1700 x 880 x 620mm (LWH) (Standard)

<b>40L/min 12v Transfer40 Pump</b> SKU: DULO440LDO40V1	<b>50L/min 12v Piusi Pump</b> SKU: DULO440LF045V1
<b>\$2,110*</b>	<b>\$2,370*</b>

★ Steel Mounting Frame **\$820\*** SKU: ASFD00440



### 600 Litres

1700 x 880 x 740mm (Standard)

<b>50L/min 12v Piusi Pump</b> SKU: DULO600LF045V1	<b>60 L/min 12v Fluid Pump</b> SKU: DULO600LF060V1
<b>\$2,480*</b>	<b>\$2,800*</b>

★ Steel Mounting Frame **\$820\*** SKU: ASFD00440



Inc LiquidLocker Baffles



### 800 Litres

1700 x 1000 x 860mm (LWH) (Standard)

<b>60 L/min 12v Pump</b> SKU: DULO800LF060V1	<b>80 L/min 12v Pump</b> SKU: DULO800LT080V1
<b>\$3,420*</b>	<b>\$3,680*</b>

★ Steel Mounting Frame **\$820\*** SKU: ASFD00440



Inc LiquidLocker Baffles



### 1,000 Litres

1700 x 1000 x 1025mm (LWH) (Standard)

<b>60 L/min 12v Pump</b> SKU: DUL1000LF060V1	<b>80 L/min 12v Pump</b> SKU: DUL1000LT080V1
<b>\$3,650*</b>	<b>\$3,900*</b>

★ Steel Mounting Frame **\$820\*** SKU: ASFD00440



Inc LiquidLocker Baffles



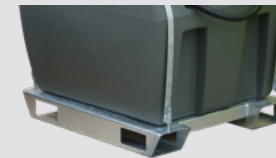
### 1,200 Litres

1700 x 1000 x 1190mm (LWH) (Standard)

<b>60 L/min 12v Pump</b> SKU: DUL1200LF060V1	<b>80 L/min 12v Pump</b> SKU: DUL1200LT080V1
<b>\$3,890*</b>	<b>\$4,150*</b>

★ Steel Mounting Frame **\$820\*** SKU: ASFD00440

## UPGRADE OPTIONS



**\$SEE TABLES**

**Steel Frames**

**Forkliftable Steel Frames**



**\$393\***

**Flow Meter**

**5-Digit Flow Meters**  
SKU: ADFPE25D5

# DieselCadet™

Diesel Transfer Refueling Tanks

Free-Standing Diesel Tanks

Tank Sizes:  
50 - 10,000 Litres



## KEY FEATURES



3/4" Drain Bung  
and Optional  
Brass Outlet



Heavy-duty, UV  
Stabilized Tank  
with 15-Year  
Warranty



4 x Mounting  
Pins Supplied for  
Easy & Secure  
Mounting



A Large  
Removable Plate  
Lid Allows Access  
to the Tank if  
Required

## Free-Standing with 25-Year Warranty

The DieselCadet™ poly diesel tanks are widely regarded for their versatility when transporting larger volumes of diesel. These free-standing diesel cartage tanks can be tray-mounted and kitted out with pumps and hose reels to suit different applications.

Note: Supplied with Pins for Easy Mounting & Securing (Above 500L)





SCAN TO SEE THIS PRODUCT IN ACTION!



**50 Litres**

**100 Litres**

800 x 430 x 390mm (LWH)  
SKU: DTC00050L

900 x 450 x 475 mm (LWH)  
SKU: DTC00100L

**\$426\***

**\$640\***

ø150mm Lid & Seal Assy;  
3/4" Drain Bung; Optional Outlet



**220 Litres**

925 x 710 x 510mm (LWH)  
SKU: DTC00220L

**\$750\***

ø250 Lid & Seal Assembly;  
3/4" Drain Bung; Optional Outlet

★ **Steel Skid-Frame** **\$675\*** SKU: ASFD00220

★ **Top-Mount Steel Pump Plate** **\$295\***



**400 Litres**

1620 x 710 x 510mm (LWH)  
SKU: DTC00400AL

**\$1,200\***

ø250 Lid & Seal Assembly;  
3/4" Drain Bung; Optional Outlet

★ **Steel Skid-Frame** **\$800\*** SKU: ASFD00400A

★ **Top-Mount Steel Pump Plate** **\$295\***



**500 Litres**

1250 x 1070 x 580mm (LWH)  
SKU: DTC00500L

**\$1,365\***

Mounting Pins Provided; ø250 Lid & Seal Assembly;  
3/4" Drain Bung; Optional Outlet



**600 Litres**

1250 x 1070 x 740mm (LWH)  
SKU: DTC00600L

**\$1,610\***

Mounting Pins Provided; ø455 Lid & Seal Assembly;  
3/4" Drain Bung; Optional Outlet

★ **LiquidLocker™ 16pcs** **\$208\***



**800 Litres**

1430 x 1220 x 670mm (LWH)  
SKU: DTC00800L

**\$1,985\***

Mounting Pins Provided; ø455 Lid & Seal Assembly;  
3/4" Drain Bung; Optional Outlet

★ **LiquidLocker™ 17pcs** **\$221\***



SCAN TO SEE THIS PRODUCT IN ACTION!



**1,000 Litres**

1430 x 1220 x 835mm (LWH)  
SKU: DTC01000L

**\$2,185\***

Mounting Pins Provided; ø455 Lid & Seal Assembly;  
3/4" Drain Bung; Optional Outlet

★ LiquidLocker™ 24pcs **\$312\***



**1,200 Litres**

1720 x 1230 x 840mm (LWH)  
SKU: DTC01200L

**\$2,310\***

Mounting Pins Provided; ø455 Lid & Seal Assembly;  
3/4" Drain Bung; Optional Outlet

★ LiquidLocker™ 29pcs **\$377\***



**1,500 Litres**

1720 x 1230 x 1000mm (LWH)  
SKU: DTC01500L

**\$2,880\***

Mounting Pins Provided; ø455 Lid & Seal Assembly;  
3/4" Drain Bung; Optional Outlet

★ LiquidLocker™ 40pcs **\$520\***



**2,000 Litres**

2150 x 1410 x 870mm (LWH)  
SKU: DTC02000L

**\$3,785\***

Mounting Pins Provided; ø455 Lid & Seal Assembly;  
3/4" Drain Bung; Optional Outlet

★ LiquidLocker™ 55pcs **\$715\***

★ Steel Mounting Frame **\$2,700\*** SKU: ASFC02000



**2,400 Litres**

2150 x 1410 x 1140mm (LWH)  
SKU: DTC02400L

**\$4,310\***

Mounting Pins Provided; ø455 Lid & Seal Assembly;  
3/4" Drain Bung; Optional Outlet

★ LiquidLocker™ 66pcs **\$858\***

★ Steel Mounting Frame **\$2,700\*** SKU: ASFC02000



**3,000 Litres**

2430 x 1540 x 1200mm (LWH)  
SKU: DTC03000L

**\$5,915\***

Mounting Pins Provided; ø455 Lid & Seal Assembly;  
3/4" Drain Bung; Optional Outlet

★ LiquidLocker™ 85pcs **\$1,105\***

★ Steel Mounting Frame **\$4,205\*** SKU: ASFC03000





SCAN TO SEE THIS PRODUCT IN ACTION!



**4,000 Litres**

2430 x 1540 x 1450mm (LWH)  
SKU: DTC04000L

**\$6,805\***

Mounting Pins Provided; ø455 Lid & Seal Assembly;  
3/4" Drain Bung; Optional Outlet

★ LiquidLocker™ 110pcs **\$1,430\***

★ Steel Mounting Frame **\$4,205\*** SKU: ASFC03000



**5,000 Litres**

2760 x 2000 x 1400mm (LWH)  
SKU: DTC05000L

**\$8,020\***

Mounting Pins Provided; ø455 Lid & Seal Assembly;  
3/4" Drain Bung; Optional Outlet

★ LiquidLocker™ 138pcs **\$1,794\***

★ Steel Mounting Frame **\$5,525\*** SKU: ASFC05000



**6,000 Litres**

2760 x 2000 x 1540mm (LWH)  
SKU: DTC06000L

**\$10,220\***

Mounting Pins Provided; ø455 Lid & Seal Assembly;  
3/4" Drain Bung; Optional Outlet

★ LiquidLocker™ 165pcs **\$2,145\***

★ Steel Mounting Frame **\$5,525\*** SKU: ASFC05000



**7,000 Litres**

3390 x 2250 x 1390mm (LWH)  
SKU: DTC07000L

**\$10,860\***

Mounting Pins Provided; ø455 Lid & Seal Assembly;  
3/4" Drain Bung; Optional Outlet

★ LiquidLocker™ 190pcs **\$2,470\***

★ Steel Mounting Frame **\$6,940\*** SKU: ASFC07000



**NEW!**

**8,000 Litres**

3600 x 2100 x 1540mm (LWH)  
SKU: DTC08000AL

**\$13,510\***

Mounting Pins Provided; ø455 Lid & Seal Assembly;  
3/4" Drain Bung; Optional Outlet

★ LiquidLocker™ 240pcs **\$3,120\***

★ Steel Mounting Frame **\$6,940\*** SKU: ASFCA08000



**10,000 Litres**

3480 x 2250 x 1940mm (LWH)  
SKU: DTC10000L

**\$15,870\***

Mounting Pins Provided; ø455 Lid & Seal Assembly;  
3/4" Drain Bung; Optional Outlet

★ LiquidLocker™ 295pcs **\$3,835\***

★ Steel Mounting Frame **\$6,940\*** SKU: ASFC07000

# DieselCadet™

Free-Standing Diesel Tanks

with Pump & Optional Skid

Tank Sizes:  
1,000 - 6,000 Litres

25-YEAR

25

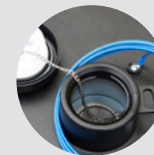
TANK WARRANTY



## KEY FEATURES



Reliable 60L/min 12v Fluid Italian Pump with 4m Battery Cables



Large Removable Plate Lid with Pad-Lockable Filler Cap



6 Meters 1" Delivery Hose & Auto Shut-off Nozzle



4 x Mounting Pins Supplied for Easy and Secure Mounting

## Comes with 25-Year Warranty

The DieselCadet™ with pump is a complete refueling solution, ready to be mounted onto a trailer or left stationary on the ground. Backed with a 15 Year Tank Warranty.





SCAN TO SEE THIS PRODUCT IN ACTION!



Pictured with Optional Frame & Reel

DieselCadet™ with 60L/min 12v Pump			
CODE	CAPACITY (LITRES)	RRP*(\$)	STEEL FRAME
DUC1000LF060V1	1,000 Litres	\$ 3,480*	\$ 2,820*
DUC1200LF060V1	1,200 Litres	\$ 3,770*	\$ 2,990*
DUC1500LF060V1	1,500 Litres	\$ 4,220*	\$ 2,990*
DUC2000LF060V1	2,000 Litres	\$ 5,030*	\$ 2,700*
DUC2400LF060V1	2,400 Litres	\$ 5,635*	\$ 2,700*
DUC3000LF060V1	3,000 Litres	\$ 6,885*	\$ 4,205*
DUC4000LF060V1	4,000 Litres	\$ 8,410*	\$ 4,205*
DUC5000LF060V1	5,000 Litres	\$ 9,710*	\$ 5,525*
DUC6000LF060V1	6,000 Litres	\$ 12,065*	\$ 5,525*

## UPGRADE OPTIONS



\$ 464\*

**Filter**

**Cartridge Filter**  
(for 60L/min Pump Only)  
SKU: ADC30M25DUC-F



\$ 393\*

**Flow Meter**

**5-Digit Flow Meters**  
SKU: ADFPE25D5



\$ 2,215\*

**10m Retractable Reel**

**10m of 25mm Hose & 1" Nozzle**  
SKU: ADHR010M25



**See Table**

**Steel Frames**

**Steel-Mounting Frames**  
SEE TABLE FOR PRICING



**POA**

**LiquidLocker™**

**LiquidLocker™ Ball Baffles**  
CONTACT US FOR PRICING



\$ 1,830\*

**GX160 Engine**

**GX160 Honda & 490L/min Pump**  
UPGRADE PRICE FROM 60LPM 12V PUMP





# DIESEL REFUELING TRAILERS



# DieselPatrol14™

## Diesel Transfer Refueling Trailers

**TTi's DieselPatrol14™ Refueling Trailer is a simple yet effective solution, at an affordable price.**

Providing serious bang for your buck, the DieselPatrol14 provides safe and hassle-free refueling for your plant and equipment.

Featuring a robust galvanized chassis, heavy duty poly diesel tank, high flow pump mounted in a toolbox, the DieselPatrol14 will deliver effortless refueling of equipment.

### KEY FEATURES



50L/min 12v Piusi Pump Mounted in Lockable Toolbox



Heavy-Duty Poly Tank with LiquidLocker™ Baffles



Galvanised Chassis with 50mm 2T-Rated Galvanised Axles & 14" Wheels



LED Combination Tail & Number Plate Lights



SCAN TO SEE THIS PRODUCT IN ACTION!

**\$ 9,380\***

**1,000 Litres (UnBraked)**

UnBraked with 50L/min 12v Piusi Pump; with Lights; Unbraked

SKU: DSRX1000LF045V1

**\$ 11,860\***

**1,000 Litres (with Brake)**

Braked / Registerable with 50L/min 12v Piusi Pump; with Lights; with Brakes

SKU: DSRQ1000LF045V1

### UPGRADE OPTIONS



**\$ 660\***

**Cartridge Filter**

SKU: ADC30M25-F

**\$ 2,215\***

**10m Retractable Hose Reel**

SKU: ADHR010M25







We Are an Approved

**VicRoads Trailer Registration Dealer!**

# DieselPatrol15™

Diesel Refueling Trailers

TTI's DieselPatrol15™ Refueling Trailers are the professionals choice for providing safe and hassle-free refueling for your plant and equipment.

The DieselPatrol15 features a robust galvanized chassis, heavy duty poly tanks, high flow pumps, and optional hose reels, for ultimately delivering effortless refueling of your equipment.



# DIESELPATROL15™

Refueling Trailers



SCAN TO SEE THIS PRODUCT IN ACTION!



## KEY FEATURES



Galvanised Chassis with 65mm 2T-Rated Galvanised Axles & 15" Landcruiser Wheels



Recessed LED Combination Tail Lights & License Plate Light



Fully-Drainable UV Stabilised Poly Tank with LiquidLocker™ Baffles



Diesel Cartridge Filter 30micron (Water Absorbing)

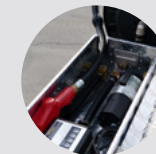


10m Retractable Reel with 10m of 25mm Hose & 1" Nozzle



4-Digit Mechanical Flow Meter

## PUMP OPTIONS



Fluid Italian 60L/min 12v Pump Mounted in Lockable Toolbox



GX160 Honda & 490L/min Pump with Pressure Relief

# DIESELPATROL15™

Single Axle Refueling Trailers

## SINGLE AXLE



SCAN TO SEE THIS PRODUCT IN ACTION!



### 800 Litres

### 1,000 Litres

12v 60L/min Pump

Honda GX160 490L/min Pump

12v 60L/min Pump

Honda GX160 490L/min Pump

\$13,175\*

\$15,810\*

\$16,125\*

\$18,760\*

\$13,290\*

\$16,180\*

\$16,240\*

\$19,130\*

UnBraked

Hydraulic Braked;  
Registerable

UnBraked

Hydraulic Braked;  
Registerable

UnBraked

Hydraulic Braked;  
Registerable

UnBraked

Hydraulic Braked;  
Registerable



### 1,200 Litres

### 1,500 Litres

12v 60L/min Pump

Honda GX160 490L/min Pump

12v 60L/min Pump

Honda GX160 490L/min Pump

\$14,340\*

\$17,230\*

\$17,290\*

\$20,180\*

\$14,865\*

\$17,700\*

\$17,815\*

\$20,650\*

UnBraked

Hydraulic Braked;  
Registerable

UnBraked

Hydraulic Braked;  
Registerable

UnBraked

Hydraulic Braked;  
Registerable

UnBraked

Hydraulic Braked;  
Registerable



# DIESELPATROL15™

Dual Axle Refueling Trailers

## DUAL AXLE



SCAN TO SEE THIS PRODUCT IN ACTION!



### 1,500 Litres

12v 60L/min Pump		Honda GX160 490L/min Pump	
<b>\$18,074*</b>	<b>\$23,585*</b>	<b>\$21,025*</b>	<b>\$26,535*</b>
UnBraked	Electric Braked; Registerable	UnBraked	Electric Braked; Registerable



### 2,000 Litres

12v 60L/min Pump		Honda GX160 490L/min Pump	
<b>\$19,240*</b>	<b>\$24,980*</b>	<b>\$22,190*</b>	<b>\$27,930*</b>
UnBraked	Electric Braked; Registerable	UnBraked	Electric Braked; Registerable



### 2,400 Litres

12v 60L/min Pump		Honda GX160 490L/min Pump	
<b>\$19,925*</b>	<b>\$25,680*</b>	<b>\$22,875*</b>	<b>\$28,630*</b>
UnBraked	Electric Braked; Registerable	UnBraked	Electric Braked; Registerable



### 3,000 Litres

12v 60L/min Pump		Honda GX160 490L/min Pump	
<b>\$22,855</b>	<b>\$28,205*</b>	<b>\$25,805*</b>	<b>\$31,155*</b>
UnBraked	Electric Braked; Registerable	UnBraked	Electric Braked; Registerable

\*GST included | Freight Rates Apply

# DIESEL ACCESSORIES

## Assembly: Lid & Filter

- ◆ Pad-lockable, non vented diesel filler lid with strainer & anti-loss chain
- ◆ Used in all TransDiesel units
- ◆ #50 mesh filter at fill point helps prevent contamination of your fuel



### Diesel Lid Cap with Chain

**\$ 98\***

SKU: ADLC001CC

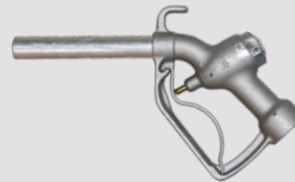
### Lid & Filter Assembly

**\$ 182\***

SKU: ADLC001CCF

## Auto Shut-Off Diesel Nozzles

Reliable Auto Shut-Off Nozzles in 2 Sizes



### 3/4" Manual Fuel Dispensing Nozzle

**\$ 136\***

**BSP Connection; Aluminium Construction**

SKU: ADGM20



### 3/4" Auto Shut-off Fuel Dispensing Nozzle

**\$ 179\***

**Supplied Standard with all 50L/min Pump Kits**

SKU: ADGA20



### 1" Auto Shut-off Fuel Dispensing Nozzle

**\$ 268\***

**Supplied Standard with all 60L/min Pump Kits**

SKU: ADGA25

## Diesel Hose

- ◆ Choose from 6 & 10 metre hose lengths
- ◆ Choose from 3/4" and 1" hose diameter
- ◆ High quality diesel grade hose with crimped fittings
- ◆ Hose kinking prevented by anti-kink spring



SKU	DESCRIPTION	RRP*(\$)
ADZF6M20	Diesel hose 6 metres 20mm with crimped ends	<b>\$ 191</b>
ADZF6M25	Diesel hose 6 metres 25mm with crimped ends	<b>\$ 303</b>
ADZF10M25	Diesel hose 10 metres 25mm with crimped ends	<b>\$ 365</b>



# DIESEL ACCESSORIES

## Fuel Level Gauge

Never guess your fuel level again!

- ◆ Fits neatly beside filler cap
- ◆ Easy to read fuel level gauge for DieselCaptain units

SKU	DESCRIPTION	RRP*[\$]
ADLM01MK	250mm Fuel Level Gauge	\$ 156
ADLM02MK	300mm Fuel Level Gauge	\$ 162
ADLM03MK	400mm Fuel Level Gauge	\$ 172
ADLM04MK	500mm Fuel Level Gauge	\$ 177
ADLM05MK	600mm Fuel Level Gauge	\$ 187



3/4" Brass Hose Swivel

\$ 81\*

3/4" MBSP to 3/4" FBSP  
SKU: CFSBB20M20F



1" Brass Hose Swivel

\$ 97\*

1" MBSP to 1" FBSP  
SKU: CFSPB25M25F



Diesel Cartridge  
70 L/min

\$ 181\*

SKU: ADC30M25F



Diesel Cartridge  
Filter 150 L/min

\$ 392\*

SKU: EFHD-15010-25



Honda GX160 Pump Kit

\$ 3,110\*

GX160 Honda & 490L/min Pump  
SKU: ADPX4900ZK



Diesel Hose Reel

\$ 2,215\*

10m of 25mm Hose & 1" Nozzle  
SKU: ADHR010M25



5-Digit Flow Meter (Digital)

\$ 393\*

5-Digit Flow Meter (Digital)  
SKU: ADFPE25D5



4-Digit Flow Meter (Mechanical)

\$ 406\*

4-Digit Flow Meter  
SKU: ADFMM25D4

## 12v Transfer40 Pump

- 12 volt 40L/min open flow rate
- Improved heavy duty switch
- Supplied with suction filter
- 3/4" BSP ports
- Self priming
- Reliable & compact
- Redesigned integrated bypass valve
- 4 metres of electrical cable with battery clips



### Transfer40 40L/min Pump

**\$ 358\***

12v with Battery Cables

SKU: ADPX2040V1P

## 12v 45L/min Fluid Pump

- 12 volt rotary electric vane pump
- Integrated suction filter & bypass valve
- 4 metres of electrical cable with battery clips
- 3/4" Female threaded ports
- Self priming
- Reliable & compact
- Made in Italy



### Fluid 45L/min Pump

**\$ 610\***

12v with Battery Cables

SKU: ADPF045V1P

## 12v 50L/min Piusi Pump

- 12 volt rotary electric vane pump
- 4 metres of electrical cable with battery clips
- 1" suction port
- 3/4" discharge port
- Self priming
- Reliable & compact
- Made in Italy



### Piusi 50L/min Pump

**\$ 610\***

12v with Battery Cables

SKU: I-12578

## 12v 60L/min Fluid Pump

- 12 volt rotary electric vane pumps
- Integrated suction filter & bypass valve
- 4 metres of electrical cable with battery clips
- 1" BSP ports
- Self priming
- Reliable & compact
- Made in Italy



### Fluid 60L/min Pump

**\$ 940\***

12v with Battery Cables

SKU: ADPF060V1P

## 24v 60L/min Fluid Pump

- 24 volt rotary electric vane pumps
- Integrated suction filter & bypass valve
- 1" BSP ports
- Self priming
- Reliable & compact
- Made in Italy
- 4 metres of electrical cable with battery clips



### Fluid 60L/min Pump

**\$ 985\***

24v with Battery Cables

SKU: ADPF060V2P

## 240v 60L/min Fluid Pump

- 60 L/min 240 volt diesel pump kit
- Made in Italy
- 1" Female BSB Threaded Ports



### Fluid 60L/min Pump

**\$ 1,090\***

240v with Plug

SKU: ADPF060V3P

## Adam 12v 85L/min Pump

- 12v 85L/min Adam Pump
- Easy clean suction strainer
- On/off switch on pump
- 1/4" suction; 1" discharge (threaded ports)



### Adam 85L/min Pump

**\$ 1,250\***

12v with Battery Cables

SKU: ADPT085V1P



## 12v 40L/min Transfer40 Kit

- Improved heavy duty switch
- Supplied with suction filter
- 3/4" BSP ports
- Self priming
- Reliable & compact
- 4 metres delivery hose
- 2 metres of 25mm suction hose
- 4 metres of electrical cable with battery clips



### Transfer40 40L/min Kit

**\$ 610\***

12v with Battery Cables  
SKU: ADPX2040V1K

## 12v 50L/min Piusi Kit

- Automatic nozzle with swivel to prevent hose tangles
- Easy clean suction strainer
- 1" Suction; 3/4" Discharge Tails
- Bypass valve integrated on pump body
- 4 metres of power cable + battery clips
- 2 metres of 25mm suction hose
- 6 metre delivery hose
- Made in Italy



### Piusi 50L/min Kit

**\$ 960\***

12v with Battery Cables  
SKU: ADPF045V1K

## 12v 60L/min Fluid Kit

- Automatic nozzle with swivel to prevent hose tangles
- Easy clean suction strainer
- 1" BSP threaded connectors
- Bypass valve integrated on pump body
- 4 metres of power cable + battery clips
- 2 metres of 25mm suction hose
- 6 metre delivery hose
- Made in Italy



### Fluid 60L/min Kit

**\$ 1,280\***

12v with Battery Cables  
SKU: ADPF060V1K

## 24v 60L/min Fluid Kit

- 60L/min 24 volt diesel pump kit
- 4 metres of power cable + battery clips
- 2 metres of 25mm suction hose
- 6 metres of 25mm anti-static delivery hose with anti-kink spring + auto shut-off nozzle
- Made in Italy



### Fluid 60L/min Kit

**\$ 1,340\***

24v with Battery Cables  
SKU: ADPF060V2K

## 240v 60L/min Fluid Kit

- 60L/min 240 volt diesel pump kit
- 2 metres of 25mm suction hose
- Made in Italy
- 6 metres of 25mm anti-static delivery hose with anti-kink spring and auto shut-off nozzle



### Fluid 60L/min Kit

**\$ 1,705\***

240 with Plug  
SKU: ADPF060V3K

## 12v 85L/min Adam Pump Kit

- Automatic nozzle with swivel to prevent hose tangles
- Easy clean suction strainer
- On/off switch on pump
- 1 1/4" suction; 1" discharge (threaded ports)



### Adam 85L/min Kit

**\$ 2,090\***

12v with Battery Cables  
SKU: ADPT085V1K

# BluEmission™

## Diesel Exhaust Fluid (DEF)

- ◆ 35L/min flow rate
- ◆ Stainless steel lid and auto shut-off nozzle for controlled dispensing
- ◆ Stainless steel pump with internal bypass for durability and ease of use
- ◆ Stainless steel breather mounted behind lid
- ◆ 4m of electrical cable with battery clips
- ◆ EPDM gaskets and seals
- ◆ Tank manufactured from urea grade polyethylene - Diesel Exhaust Fluid (DEF) compatible
- ◆ Filler cap Diesel Exhaust Fluid (DEF) compatible
- ◆ 4 metres of 19mm flexible delivery hose

## AFFORDABLE BULK ADBLUE TRANSPORTABLE TANKS

- ✓ **Enjoy the Poly Advantage of No Rust!**
- ✓ **Tanks are Designed to Carry the Extra Weight of AdBlue**
- ✓ **Available Tank Sizes: 1,000L to 30,000L**
- ✓ **25-Year Tank Warranty**
- ✓ **Extra UV Stabilisation - Protects the Tank from ever Deteriorating in Direct Sunlight**

Call us Today to Discuss  
Your Specific Requirements



\$ **2,620\***

**100** Litres

100 Litre with 35L/min Pump and Auto Nozzle  
800 x 680 x 465mm (LWH)

SKU: DALO100LT035AV1



\$ **2,895\***

**200** Litres

200 Litre with 35L/min Pump and Auto Nozzle  
800 x 680 x 710mm (LWH)

SKU: DALO200ALT035AV1

- ✓ **Diesel Exhaust Fluid (DEF)**
- ✓ **Dispenser with 35L/min flow rate**
- ✓ **Fully enclosed lockable pump compartment for security and protection**







# FIRE

## FIGHTING EQUIPMENT



# StandBy10™

Hand-Held / Tractor-Mount  
Fire Fighters



SCAN TO SEE  
THIS PRODUCT  
IN ACTION!



- ♦ Fast & consistent flow from double-action hand pump
- ♦ Adjustable nozzle for effective performance in varying conditions;
- ♦ Supplied with spring steel mounting brackets;
- ♦ UV stabilised roto-molded poly tank

**\$ 466\***

**10 Litres**

**10 Litre Tractor Mount Fire Fighter  
with Spring Steel Mounting Brackets**

SKU: PFT0010L



# BackUp16™

Knapsack Fire Fighter



SCAN TO SEE  
THIS PRODUCT  
IN ACTION!



- ♦ Fast & consistent flow from double-action hand pump
- ♦ Ideal for spark/ember suppression, managing spot fires & burning off
- ♦ Comfortable to wear, easy to carry, and easy to use
- ♦ Adjustable nozzle for effective performance in varying conditions
- ♦ Unique grease-ring pump lubrication



**\$ 399\***

**16 Litres**

**16 Litre Knapsack Fire Fighter**

SKU: PFK0016L

**\$ 205\***

**Frame**

**Vehicle Carry Frame to Suit BackUp16™**

SKU: ASFF00016





“

I can say that their 1000L slip on units are fantastic, and that the two we bought this year were instrumental in saving our farms and a neighbour's house in the Yeppoon / Cobraball bushfires. When I ordered our second unit I considered it as cheap insurance!

**DAVID GROVES**

FIRE BRIGADE MEMBER



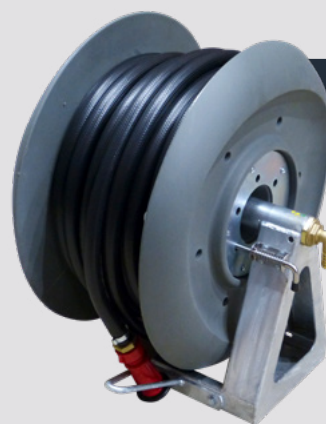
# ARE YOU READY FOR FIRE SEASON?

In the heat of the moment, you can always rely on TTI's Fire Fighting Equipment!

\*GST included | Freight Rates Apply

## FIRE FIGHTING HOSE REELS

High-Quality, Multi Purpose Manual & Spring Rewind Hose Reels



NEW & IMPROVED  
POLY REEL

**\$1,005\***

**36m Hose Reel (Poly)**

Manual rewind poly hose reel with 36m of 19mm hose & adjustable nozzle

SKU: AFHW10B036M19



**\$2,095\***

**20m Spring Rewind  
Hose Reel (Steel)**

Spring rewind steel reel with 20m x 25mm hose & adjustable nozzle

SKU: ATHW020SR

# FireCombat™

Portable Fire Fighter



- ◆ Honda GX160 Motor with 500L/min Davey Single Impeller 1½" Pump
- ◆ Pressure relief valve and bypass to protect pump;
- ◆ Camlock fittings and 6m quick fill kit for filling from external water source;
- ◆ 18m x 19mm Fire hose with adjustable nozzle

**\$4,200\***

**400 Litres**

**Honda GX160 with Davey Pump**  
**1620 x 710 x 810mm (LWH)**  
 SKU: SF0400LZ

# FireGuard™

Portable Fire Fighters

- ◆ Handy size fire fighter for rapid response to fire emergencies;
- ◆ GX50 Honda motor, 210L/min FF pump for fast & reliable flow;
- ◆ 18 metres of fire hose with twist action adjustable FF nozzle
- ◆ UV stabilised tank with 25-year warranty



**\$2,785\***

**220 Litres**

**Honda GX50 with 210L/min Pump**  
**925 x 710 x 810mm (LWH)**

SKU: SF0220LZ

**\$3,245\***

**400 Litres**

**Honda GX50 with 210L/min Pump**  
**1620 x 710 x 810mm (LWH)**

SKU: SF0400LZS



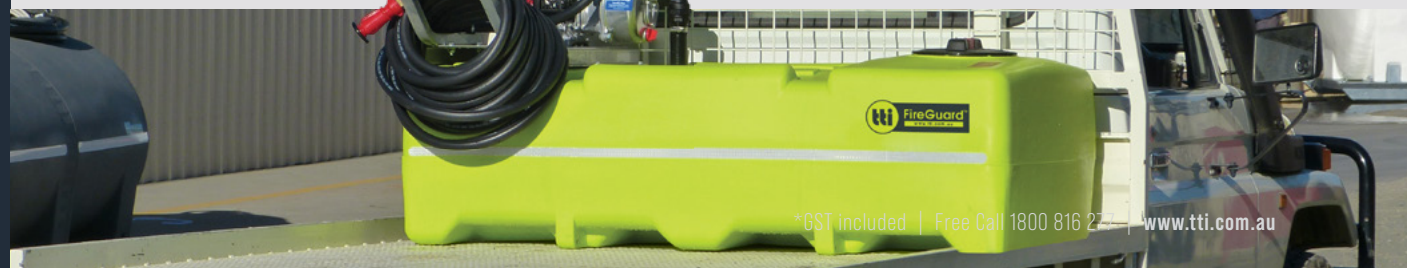
**Steel Skid-Frame** SKU: ASFD00220

**\$675\***



★ **Steel Skid-Frame** SKU: ASFD00400A

**\$800\***





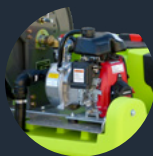
# FireBoss™

## UTV Fire Fighting Unit

Sitting neat and sitting low, the TTI FireBoss™ UTV fire fighting unit is always right behind you, when performing your fire duties.

From fire fighting, tree watering, washdown, and more, the FireBoss™ slip-on UTV firefighter lives up to its name.

### KEY FEATURES



Honda GX50 Motor with 210L/min Pump for Fast and Reliable Flow



Fully-Drainable Tank Tie-Down Provisions & Integrated Lifting Handles



18m Hose Reel with Adjustable Nozzle



Galvanised Forkable Steel Frame



(Standard)

\$4,980\*

300 Litres

Honda GX50 with 210L/min Pump  
1000 x 1250 x 600mm (LWH)

SKU: PFD0300LZS



(Compact)

\$4,980\*

300 Litres

Honda GX50 with 210L/min Pump  
870 x 1100 x 850mm (LWH)

SKU: PFDA0300LZS





# FireDefence™

Slip-On Fire Fighting Unit



**A compact combo that always delivers punch, the FireDefence™ is in a class of its own.**

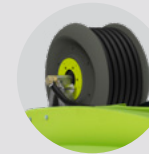
The unique mounting of the pump, motor and reel ensures the centre of gravity is low and safe, making it the perfect choice for property owners.



## KEY FEATURES



Honda GX160 Motor with 500L/Min Davey Single Impeller 1½" Pump



36m Hose Reel with Adjustable Nozzle



UV Stabilised Poly Tank with Tie-Down Provisions & Integrated Lifting Handles



LiquidLocker™ Baffling System Fitted



6m Suction Fill Kit for Filling from External Water Source



Low-Profile Design for Safety and Stability





# FIREDEFENCE™

Slip-On Fire Fighting Unit



SCAN TO SEE  
THIS PRODUCT  
IN ACTION!

Heavy-Duty Fire Fighters

Ideal for Tray or Trailer Mounting



\$5,955\*

600 Litres

1700 x 1000 x 990mm (LWH)

SKU: SFD0600LZ

\$6,105\*

800 Litres

1700 x 1000 x 1155mm (LWH)

SKU: SFD0800LZ

\$6,340\*

1000 Litres

1700 x 1000 x 1320mm (LWH)

SKU: SFD1000LZ

## UPGRADE OPTIONS



\$820\*

Frame Upgrade

Forkliftable Steel Frame

SKU: ASFD00440



\$451\*

Pump Upgrade

Davey Twin Impeller Pump

SKU: ADD "T" TO END OF SKU



\$806\*

Reel Upgrade

20m Spring Rewind Reel

SKU: ADD "S" TO END OF SKU



# FireAttack™

Skid-Mounted Fire Fighting Unit



SCAN TO SEE  
THIS PRODUCT  
IN ACTION!



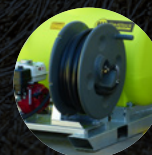
## KEY FEATURES

Always action ready, the FireAttack™ lineup of slip on firefighting units are the choice of serious property owners.

During the heat of the moment, when every drop counts, the fully draining tank and Davey Twin Impeller pump will deliver under pressure!



Honda GX200 Engine with 400l/Min Davey Twin Impeller 1½" Pump



36m x ¾" Heavy-Duty Hose Reel with Adjustable Twist Type Nozzle



Heavy-Duty Galvanised Skid Frame with Forklift Pockets



UV Stabilised Fully-Drainable Tank with Liquidlocker™ Baffle System



6m Suction Fill Kit for Filling from External Water Source



Pressure Relief Bypass Ensures Pump Remains Cool when In Operation





SCAN TO SEE  
THIS PRODUCT  
IN ACTION!



**\$7,060\***

**400 Litres**

1480 x 1220 x 1000mm (LWH)  
SKU: PFUS0400LZF



**\$7,165\***

**500 Litres**

1740 x 1250 x 760mm (LWH)  
SKU: PFU0500LZF



**\$7,410\***

**600 Litres**

1740 x 1250 x 920mm (LWH)  
SKU: PFU0600LZF



**\$7,580\***

**800 Litres**

1900 x 1440 x 810mm (LWH)  
SKU: PFU0800LZF



**\$7,980\***

**1,000 Litres**

1900 x 1440 x 980mm (LWH)  
SKU: PFU1000LZF



**\$8,435\***

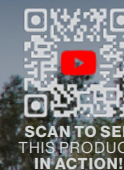
**1,500 Litres**

1900 x 1700 x 1250mm (LWH)  
SKU: PFU1500LZF



# AquaPath™

Skid-Mounted Water Carts



SCAN TO SEE  
THIS PRODUCT  
IN ACTION!



## KEY FEATURES

**TTi's tough and robust AquaPath™ is perfect for civil works, dust suppression, tree watering and fire fighting.**

This AquaPath™ slip-on water cart is simple, effective & reliable, and will be sure to get any water transport job done with ease! Our range of accessories and options ensures we can provide you with the perfect AquaPath™ water cart for your needs!

Tested and ready to be mounted on any tipper, flat tray or trailer!



Honda GX200 6.5hp Engine with 400L/Min 1 1/2" Davey Twin Impeller Pump



36m Heavy-Duty Hose Reel with Adjustable Nozzle



Dual Deflector Sprayer Kit with Wireless Remote Control



Heavy-Duty Poly Tank with Liquidlocker™ Baffle System



Galvanised Steel Skid Frame with Forklift Pockets



6m Suction Fill Kit for Filling from External Water Source







SCAN TO SEE THIS PRODUCT IN ACTION!



### UPGRADE OPTIONS



**\$1,640\***

**Honda Elec Start Engine**

Honda Electric Start Engine with Battery Pack



**\$3,990\***

**Yanmar Diesel Engine 4.8hp**

Electric Start with Battery Pack and Davey Pump



**\$1,980\***

**Hydrant Fill Lid**

3" Hydrant Fill Lid



**\$806\***

**Spring Rewind Reel**

18m x 25mm hose and adjustable F/F nozzle

# AQUAPATH™

## Skid-Mounted Water Carts



SCAN TO SEE  
THIS PRODUCT  
IN ACTION!



**\$14,440\***

**2,000 Litres**

2910 x 1410 x 958mm (LWH)



**\$14,885\***

**2,400 Litres**

2910 x 1410 x 1228mm (LWH)



**\$17,895\***

**3,000 Litres**

3020 x 1540 x 1340mm (LWH)



**\$19,470\***

**4,000 Litres**

3020 x 1540 x 1590mm (LWH)



**\$22,305\***

**5,000 Litres**

3500 x 2000 x 1569mm (LWH)



**\$23,805\***

**6,000 Litres**

3500 x 2000 x 1709mm (LWH)



# AQUAPATH™ TESTIMONIALS



“ Highly recommend one of these TTi AquaPath™ units to anyone in the civil industry.”

**Peter Atkinson**

Bulldog Earthmoving  
Civil Contractor

“ Very easy to take off the truck for something else if we're not using the tank. We've got six AquaPath™ units across the company. They're very versatile, easy to fill-up and make it a lot easier on site.

**Michael Hanly**

ACE Contractors Group Civil and Landscaping

“ Highly recommend TTi, I couldn't recommend them any more, they always have the after sales service, and will hand deliver the unit! You can't ask for any better service!

**Neil and Gareth**

Regal Innovations Civil and Landscaping



# FirePatrol14™

Water Cartage Trailer



Simple, safe and effective sums up the FirePatrol14™ water cart trailer. Clearly a market leader.

A great property owners choice for a range of applications such as firefighting, water transfer, washdown and wherever else you need water.



## KEY FEATURES



GX160 Honda Motor with 1½" Single Impeller Davey 500L/Min Pump



36m Heavy-Duty Hose Reel with Adjustable Nozzle



Galvanised Chassis with 50mm 2T-Rated Galvanised Axles & 14" Wheels



Heavy-Duty Poly Tank with LiquidLocker™ Baffles



6m Suction Fill Kit with Bracket for Filling from External Water Source



Led Combination Tail & Number Plate Lights



# Multi-Purpose Water Cart Trailer

## for Fire Fighting, Dust Suppression and Tree Watering



**\$10,460\***

**1,000 Litres**

**UnBraked**  
SKU: SRFX1000LZ

**\$12,230\***

**1,000 Litres**

**Braked / Registerable**  
SKU: SRFQ1000LZ

Now fitted with  
**LiquidLocker™**  
**Baffle System!**



### UPGRADE OPTIONS



**\$1,640\***

**Honda Electric Start Engine**

Honda Electric Start Engine with  
Battery Pack



**\$2,935\***

**Deflector Sprayer Kit  
with Actuator**

Single Deflector with Actuator Valve  
& Wireless Remote Control



**\$915\***

**Deflector Spray Kit  
Manual Control**

1.5 inch Single Deflector, Ball Valve  
& Pipework





We Are an Approved

**VicRoads Trailer Registration Dealer!**

# FirePatrol15™

Australia's No: 1 Water Cartage Trailer

Robust, safe and engineer approved, the FirePatrol15™ line up of water cartage trailers are still being voted 'Best & Fairest' on and off the road!

High performing and versatile, they make putting 'water to work' a pleasure!



# FIREPATROL15™

Australia's No: 1 Water Cartage Trailer



SCAN TO SEE THIS PRODUCT IN ACTION!



**SINGLE AXLE**



**DUAL AXLE**

## KEY FEATURES



Reliable Honda GX200 Engine & 400L/Min Davey Twin Impeller Pump



36m Heavy-Duty Hose Reel with Adjustable Nozzle



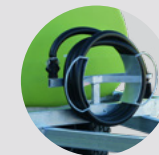
Galvanised Chassis with 65mm 2T-Rated Galvanised Axles & 15" Landcruiser Wheels



Recessed Led Combination Taillights & License Plate Light



Fully-Drainable UV Stabilised Poly Tank With Liquidlocker™ Baffles



6m Suction Fill Kit with Bracket for Filling from External Water Source

## UPGRADE OPTIONS



**\$3,990\***

**Yanmar Diesel Engine 4.8hp**

Electric Start with Battery Pack and Davey Pump



**\$1,640\***

**Honda Elec Start Engine**

Honda Electric Start Engine with Battery Pack



**\$915\***

**Single Deflector**

1.5" Deflector, Ball Valve & Pipework



**\$3,883\***

**Dual Deflectors**

1.5" Deflectors, Single actuator Valve with Remote Control & Pipework



**\$1,090\***

**Spring Rewind Reel**

18m x 25mm Hose and Adjustable F/F Nozzle



**\$1,980\***

**Hydrant Fill Lid**

3" Hydrant Fill System

# FIREPATROL15™

Australia's No: 1 Water Cartage Trailer

## SINGLE AXLE



SCAN TO SEE THIS PRODUCT IN ACTION!



**800 Litres**

**\$12,700\***

**\$14,595\***

**Unbraked**

**Braked Registerable**

(Hydraulic Brakes)

SKU: PRFX0800LZ

SKU: PRFQ0800LZ



**1,000 Litres**

**\$13,150\***

**\$15,215\***

**Unbraked**

**Braked Registerable**

(Hydraulic Brakes)

SKU: PRFX1000LZ

SKU: PRFQ1000LZ



**1,200 Litres**

**\$14,410\***

**\$16,490\***

**Unbraked**

**Braked Registerable**

(Hydraulic Brakes)

SKU: PRFX1200LZ

SKU: PRFQ1200LZ





# FIREPATROL15™

Australia's No. 1 Water Cartage Trailer

## DUAL AXLE



SCAN TO SEE THIS PRODUCT IN ACTION!



1,500 Litres	
<b>\$17,200*</b>	<b>\$22,040*</b>
Unbraked	Braked Registerable (Electric Brakes)
SKU: PRFXD1500LZ	SKU: PRFQD1500LZ

2,000 Litres	
<b>\$19,700*</b>	<b>\$23,670*</b>
Unbraked	Braked Registerable (Electric Brakes)
SKU: PRFXD2000LZ	SKU: PRFQD2000LZ

2,400 Litres	
<b>\$20,250*</b>	<b>\$24,095*</b>
Unbraked	Braked Registerable (Electric Brakes)
SKU: PRFXD2400LZ	SKU: PRFQD2400LZ

3,000 Litres	
<b>\$22,280*</b>	<b>\$27,380*</b>
Unbraked	Braked Registerable (Electric Brakes)
SKU: PRFXD3000LZ	SKU: PRFQD3000LZ



\*GST included | Freight Rates Apply

# PantherPatrol™

State-of-the-Art  
Water Cartage Trailer

Clearly a market leading water cart trailer.

The state of the art TTI PantherPatrol™ Trailer Mounted Water Cart includes an inbuilt handwash tank and toolbox, and can be used for firefighting, washdown and tree watering.

## KEY FEATURES



Genuine GX200  
Honda Motor  
Twin Impeller  
Davey Fire  
Fighting Pump



36m of 19mm  
Hose Fire  
Fighting Hose  
Reel with  
Adjustable  
Nozzle



15" wheels with  
Landcruiser  
Hub Pattern with  
Galvanised Steel  
Frame



LiquidLocker™  
Baffling System



SCAN TO SEE  
THIS PRODUCT  
IN ACTION!



**1,100** Litres

**\$13,800\***

Unbraked  
Honda GX200 with Twin Impeller  
Davey Pump  
SKU: PRFPX1100LZ

**\$16,825\***

Braked / Registerable  
Honda GX200 with Twin Impeller  
Davey Pump  
SKU: PRFPQ1100LZ







# CIVIL

## EQUIPMENT



# PolymerPro™

Polymer Application Trailer



TTi's market-leading solution for transporting and applying polymer – The PolymerPro™.

TTi's latest innovation is designed specifically for industries like civil construction, commercial landscaping, and mining. The Polymer Pro Trailer makes applying polymer chemicals easier and more efficient than ever before.



SCAN TO SEE THIS PRODUCT IN ACTION!



## KEY FEATURES



Genuine Honda GX200 Petrol Engine coupled with a Polmer-Spec 75L/Min Bertolini Pump



Twin Agitator System & Pressure Bypass



4-way pressure regulator and gauge for accurate & controlled spraying



Complete with 36m x 19mm Hose and brass nozzle designed for polmer application



100L freshwater tank plumbed to the main tank with a valve for flushing



Venturi Quick Fill Kit - Easy tank filling from external water source or sucking polmer from IBC/ drums into the tank



Available in 1,000 & 2,000 Litres



SCAN TO SEE  
THIS PRODUCT  
IN ACTION!



## UPGRADE OPTIONS



### Honda Electric Start Engine

Honda Electric Start Engine with  
Battery Pack



### Dual Deflector Sprayer Kit with Actuator

1.5" Dual Deflector with Actuator  
Valve & Wireless Remote Control



### Deflector Spray Kit Manual Control

1.5 inch Single Deflector, Ball Valve  
& Pipework

# 4X2 / 6X4 PACKAGES

## Water Trucks

At TTI, we have been manufacturing and supplying reliable water truck solutions for Civil Contractors, Landscapers, Councils and Hire Companies across the country for over 20 years. TTI's water trucks simply work when you need them to.

**ISUZU**  
TRUCKS

**HINO**

**FUSO**

**UD**  
TRUCKS



SCAN TO SEE  
THIS PRODUCT  
IN ACTION!





# FEATURES

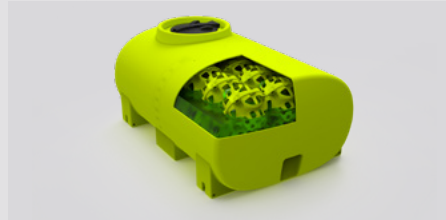


SCAN TO SEE THIS PRODUCT IN ACTION!



### HEAVY-DUTY POLY TANK

Tough, rotomolded poly tank with a 20-Year Warranty, reflective decals & rear/side site tubes



### LIQUIDLOCKER™ Baffle System

100% Elimination of liquid surge for safe water transport



### ENGINEER APPROVED CHASSIS FRAME

Galvanised, engineer-approved subframe, fitted to truck chassis. VASS Certificate supplied.



### EASY-TO-USE IN-CAB CONTROLLER

Ergonomic In-cab control panel mounted in the cabin



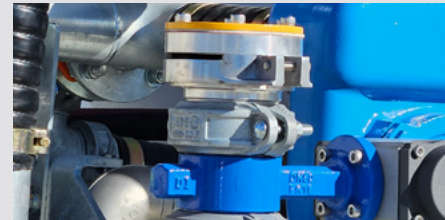
### HYDRAULIC PUMP SYSTEM

Variable Speed Hydraulic system complete with Hydra Pak, PTO to Truck, Piston Pump, Hydraulic valving and controls



### 1600 L/MIN CAST IRON PUMP

1600L/min, Self Priming, Australian Made Cast Iron Pump with pressure relief



### 3" REAR SPRAY HEADS

Central 3" & two 1.5" left and right magnum spray heads with individual on/off. Adjustable roll groove mounting



### PRESSURISED AND/OR GRAVITY DRIBBLE BAR

Featuring 3" Pressurised and/or Gravity Dribble Bar's



### 3" WATER CANNON (ELECTRIC)

Electric nozzle for spray pattern control; In-cab joystick; Australian Made



### BATTERY SPRAY HEADS

2x Battery spray heads mounted on each side of the truck between the tank and the cab



### FRONT SPRAY HEADS

2 x Front spray frog nozzles mounted on front of the truck - individual on/off



### WORK LIGHTS

Engineered-for-purpose water cart vehicles. Built to your specifications to suit any mining, civil, or commercial environment.



# 4X2 TRUCK PACKAGES



SCAN TO SEE  
THIS PRODUCT  
IN ACTION!



# 8,000L

8,000L (HINO 4x2)



8,000L (ISUZU 4x2)



8,000L (HINO 4x2)





# 6X4 TRUCK PACKAGES



SCAN TO SEE  
THIS PRODUCT  
IN ACTION!



## 13,000L & 15,000L

**13,000L** (UD 6x4)



**15,000L** (HINO 6x4)



**15,000L** (ISUZU 6x4)





# WATER TRUCK CHASSIS-MOUNT MODULES

## AquaModule™

TTi offers remote supply modules, which is the perfect solution if you have the desire to do your own 'fit-off' of a complete water cart module.

Design, fabrication and testing of steel componentry is all completed in house, before being hot-dip galvanised ready for final assembly.

The module is then fully assembled and tested one of our state-of-the-art facilities, ready for sign off and mounting to the truck of your choice.

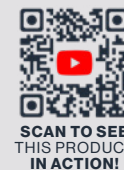


SCAN TO SEE  
THIS PRODUCT  
IN ACTION!





# WE OFFER A RANGE OF SIZES



**8,000** Litres



**10,000** Litres



**12,000** Litres



**13,000** Litres



**15,000** Litres

- 

**PLUG & PLAY WIRING**  
For Fast & Easy Wiring
- 

**BODY MOUNTING KIT**  
Engineer Approved Brackets
- 

**INSTALLATION GUIDE SUPPLIED**  
Step by Step Guide
- 

**FACTORY TESTED BEFORE DISPATCH**  
Ready to Work!

# SLIP-ON WATER CARTS

## FloodRite™

FloodRite™ slip on water carts are designed primarily for slipping into tipper trucks, or forklifting onto tray trucks.

Their perfect for general civil works or road construction, dust suppression or landscape watering.



SCAN TO SEE  
THIS PRODUCT  
IN ACTION!





SCAN TO SEE THIS PRODUCT IN ACTION!

# FEATURES



### HANDHELD WIRELESS REMOTE CONTROL

Turn motor on/off, spray bar & dribble bar on/off. Easily switch trucks.



### HEAVY-DUTY, FULLY BAFFLED POLY TANK

UV stabilized tank, suitable for potable water and backed by an industry best 20 year warranty.



### 1600L/MIN SELF PRIMING PUMP

1600L/min Self Priming Pump with Honda Petrol or Yanmar Diesel Engines.



### HEAVY DUTY GALVANISED SKID FRAME

The tank is mounted on a heavy duty skid frame, which incorporates forklift pockets.



### 20M SPRING RETRACTABLE HOSE REEL

Heavy-duty spring rewind multi-purpose hose reel, fitted with 20m of 25mm wash down hose and adjustable nozzle.



### ERGONOMIC PIPEWORK MANIFOLD

Fully welded and hot dip galvanised pipework manifold, with actuators & valves.



### STANDPIPE, HYDRANT & SUCTION FILL CAPABILITIES

3" Hydrant Funnel fill lid, hydrant system with air-gap & 6m quick fill kit for suction filling.



### 3" REAR ADJUSTABLE SPRAY HEADS

Fully adjustable & individually operated rear spray heads.

# WE OFFER A RANGE OF SIZES

SLIP ON WATER CARTS



**6,000** Litres

3600 x 2000 x 1990mm (LWH) / 1,200kg



**8,000** Litres

4400 x 2100 x 1990mm (LWH) / 1,450kg



**10,000** Litres

4400 x 2100 x 2330mm (LWH) / 1,550kg



**12,000** Litres

4400 x 2100 x 2690mm (LWH) / 1,680kg



**13,000** Litres

4200 x 2250 x 2760mm (LWH) / 1,680kg



**13,000** Litres (*Low-Profile*)

5400 x 2370 x 2240mm (LWH) / 1,770kg



SLIP ON WATER CARTS



**15,000** Litres

5400 x 2370 x 2490mm (LWH) / 1,860kg



**17,000** Litres

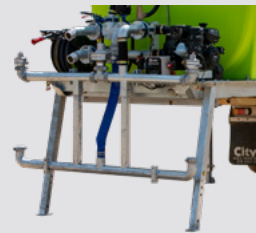
5400 x 2370 x 2840mm (LWH) / 1,950kg

EASY LOADING & UNLOADING FROM TIPPERS

OPTIONAL SWING-UP LEG SYSTEM



OPTIONS



Self-Loading Legs



Dribble Bar



Water Cannon

# HOOKLIFT WATER CARTS



SCAN TO SEE  
THIS PRODUCT  
IN ACTION!



## Hooklift™

FloodRite Hooklift water carts are designed primarily for Hooklift trucks.

They're perfect for general civil works or road construction, dust suppression or landscape watering.



10,000 Litres



13,000 Litres



15,000 Litres





SCAN TO SEE THIS PRODUCT IN ACTION!

# FEATURES



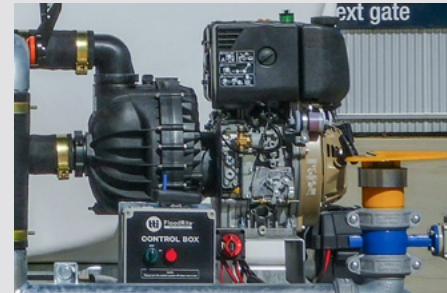
### HANDHELD WIRELESS REMOTE CONTROL

Turn motor on/off, spray bar & dribble bar on/off. Easily switch trucks.



### HEAVY-DUTY, FULLY BAFFLED POLY TANK

UV stabilized tank, suitable for potable water & backed by an industry best 20 year warranty



### 1600L/MIN SELF PRIMING PUMP

Self Priming Pump coupled with KOHLER Diesel electric start engines, with battery pack



### HEAVY-DUTY GALVANISED SKID FRAME

The tank is mounted on a heavy duty skid frame, with an a-frame



### 20M SPRING RETRACTABLE HOSE REEL

Heavy-duty spring rewind multi-purpose hose reel, fitted with 20m of 25mm wash down hose and adjustable nozzle



### ERGONOMIC PIPEWORK MANIFOLD

Fully welded and hot dip galvanised pipework manifold, with actuators & valves



### STANDPIPE, HYDRANT & SUCTION FILL CAPABILITIES

3" Hydrant Funnel fill lid, hydrant system with air-gap & 6m quick fill kit for suction filling



### 3" REAR ADJUSTABLE SPRAY HEADS

Fully adjustable & individually operated rear spray heads

# xTreme™

## Pressure Cleaning Trailer



### Heavy-Duty Cold Wash Pressure Cleaning Trailer

Heavy-duty pressure cleaning trailers are ideal for councils, civil and industrial use, with high performing pressure cleaning pumps ideal for removing heavy grime and dirt



SCAN TO SEE THIS PRODUCT IN ACTION!

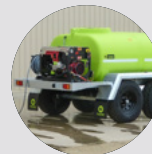
### KEY FEATURES



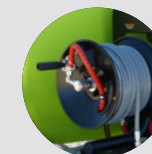
**Heavy-Duty Poly Tank**  
Australian Made, Tough, Lightweight and Rust-Free Polyethylene Cartage Tank with 25-Year Warranty



**Pressure Cleaning Kit**  
Choice of Honda petrol or Kubota diesel engines with Spitwater pressure cleaner pumps (3650psi)



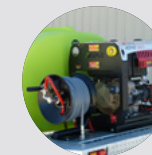
**Heavy-Duty Chassis**  
A well balanced, easy towing, fully hot dipped galvanised chassis is engineer approved, for years of hard work



**20m Hose Reel**  
Convenient 20m hose reel with heavy duty braid hose & quality spray wand



**LiquidLocker™ Baffles**  
Fitted for safety and stability, LiquidLocker™ baffles are included in every xTreme™ Trailer



**High Pressure Pump**  
High performing pumps rated to 3150-3650psi pumps get the job done with ease!



# xTreme™

# PLUS

## Pressure Cleaning & Washdown Trailer

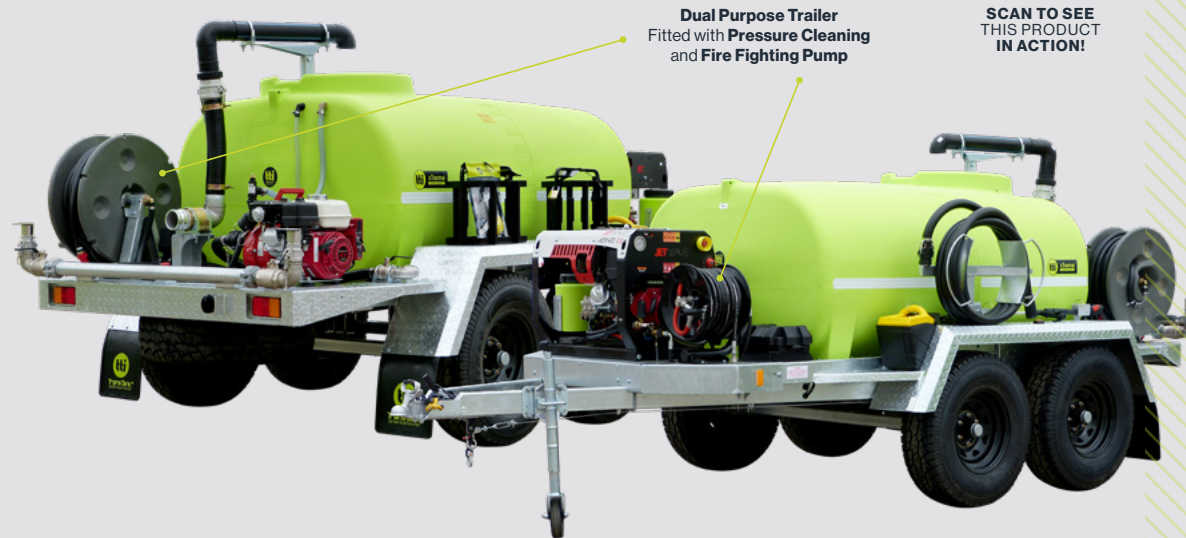


### Powerful Pressure Cleaning & Washdown Trailer

Dual purpose pressure cleaning & washdown trailers are ideal for councils, civil and industrial use. Separate pressure cleaning & washdown pumps enable you to tackle any application



SCAN TO SEE THIS PRODUCT IN ACTION!



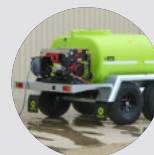
### KEY FEATURES



**Heavy-Duty Poly Tank**  
Australian Made, Tough, Lightweight and Rust-Free Polyethylene Cartage Tank with 25-Year Warranty



**Washdown Pump Kit**  
Choice of Honda petrol or Yanmar diesel engines with Davey pump for washdown; 36m x 19mm hose and reel



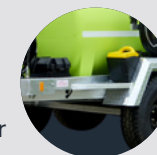
**Heavy-Duty Chassis**  
A well balanced, easy towing, fully hot dipped galvanised chassis is engineer approved, for years of hard work



**Pressure Cleaning Kit**  
Choice of Honda petrol or Kubota diesel engines with Spitwater pressure cleaner pumps (3650psi)



**LiquidLocker™ Baffles**  
Fitted for safety and stability, LiquidLocker™ baffles are included in every xTreme™ Trailer



**15" Sunraysia Landcruiser wheels** makes for smooth towing even in the toughest terrain



# OUR PEOPLE



SCAN TO SEE  
ABOUT US  
VIDEO!

## OUR STAFF - OUR KEY!

At TTi we believe that anyone can copy the products we manufacture, the marketing we produce, the facilities we have, but nobody can copy the people that make the company what it is.

Our people and their families mean everything to us and always will.





# SOME OF US!

[www.tti.com.au](http://www.tti.com.au)



**Andre Büchner**  
Director



**Ross Büchner**  
Chief Executive Officer



**Rolf Büchner**  
National Sales Manager



**Jens Büchner**  
Marketing Manager



**Richard Southall**  
Operations Manager



**Wayde Büchner**  
Head of Innovation



**Andrew Trappel**  
National Key Account Manager-AG



**Kevin Büchner**  
Industrial Product Specialist



**Dale James**  
Product Specialist



**Sidney Ferguson**  
Digital Marketing Manager



**Pierre Büchner**  
TTi Ambassador



**Elmer Selby**  
SA/NT State Manager



**Laura Steward**  
Receptionist/Admin Assistant



**Joseph Patten**  
Technical Team Leader



**Jedd Büchner**  
Product Specialist



**Rick Hansen**  
Dealer Support Specialist



**Andrea Boschetti**  
Sales Support



**Paul Kiesskalt**  
Customer Service Team Leader



**Brian Boyd**  
Customer Care Coordinator



**Craig Hook**  
Warehouse, Dispatch &  
Conveyancing Supervisor

# FREIGHT RATE GUIDE

Call to Discuss Your Tailored Freight Pricing  
**1800 816 277**

## ZONES



		1	2	3	4	5	6
All Bare Tanks	100L to 400L	\$70	\$100	\$125	\$140	\$210	POA
	500L to 1,500L	\$125	\$200	\$240	\$360	\$425	POA
	2,000L to 4,000L	\$240	\$440	\$495	\$550	\$770	POA
	5,000L to 12,000L	\$550	\$690	\$1,000	POA	POA	POA
	13,000L to 17,000L	\$690	\$1,000	POA	POA	POA	POA

Inter™ / WeedMasta™	All Sizes	\$35	\$35	\$35	\$35	\$45	POA
WeedControl™	55L to 95L	\$45	\$55	\$65	\$90	\$100	POA
	150L to 225L	\$65	\$90	\$110	\$130	\$165	POA
OnDeck™/ReelStrike™	200L to 400L	\$110	\$165	\$250	\$275	\$410	POA
TopCrop™	500L to 1,000L	\$275	\$410	\$550	\$660	POA	POA
WeedControl™ Trailers	55L / 95L / 150L	\$85	\$100	\$110	\$155	\$175	POA
TrailPro™	200L	\$140	\$210	\$275	\$415	\$440	POA
	400L	\$275	\$485	\$605	POA	POA	POA
GlidePath™	800L to 1,200L	\$550	\$1,000	POA	POA	POA	POA
LinkOn™	300L to 400L	\$140	\$275	\$385	POA	\$550	POA
	600L to 1,000L	\$210	\$415	POA	POA	POA	POA
Booms or Versatile Boom	2m - 4m	\$60	\$80	\$100	\$150	\$150	POA
Booms	6m - 8m	\$110	\$140	\$210	\$250	\$275	POA
	10m - 12m	\$210	\$275	\$485	POA	POA	POA
Hose Reels	30m - 50m	\$45	\$55	\$65	\$65	\$75	POA
	Fire Hose / SuperReels	\$65	\$90	\$110	\$130	\$130	POA

## ZONES



Diesel Units	100L to 400L	\$70	\$85	\$110	\$110	\$165	POA
	440L to 600L	\$120	\$140	\$275	\$300	\$350	POA
	800L to 1,200L	\$175	\$240	\$300	\$350	\$440	POA
	1,500L to 4,000L	\$300	\$600	\$825	POA	POA	POA
	5,000L to 10,000L	\$550	\$900	\$1,200	POA	POA	POA
Diesel Trailers	Single Axle	\$550	\$1,000	POA	POA	POA	POA
	Dual Axle	\$750	\$1,200	POA	POA	POA	POA

Fire Units	220L to 300L	\$100	\$130	\$165	\$275	\$275	POA
	400L to 1,500L	\$140	\$200	\$275	\$480	POA	POA
Fire Units / AquaPath™	2,000L to 4,000L	\$400	\$685	\$960	POA	POA	POA
	5,000L to 6,000L	\$550	\$825	\$1,200	POA	POA	POA
Fire Trailers	800L to 1,200L	\$550	\$1,000	POA	POA	POA	POA
	1,500L to 3,000L	\$750	\$1,100	POA	POA	POA	POA

AquaDelivery™ / FloodRite™ Water Trucks		POA	POA	POA	POA	POA	POA
---	--	-----	-----	-----	-----	-----	-----

### NOTE:

If multiple products are being ordered, Please contact for consolidated freight quote.

**Call 1800 816 277 for details.**



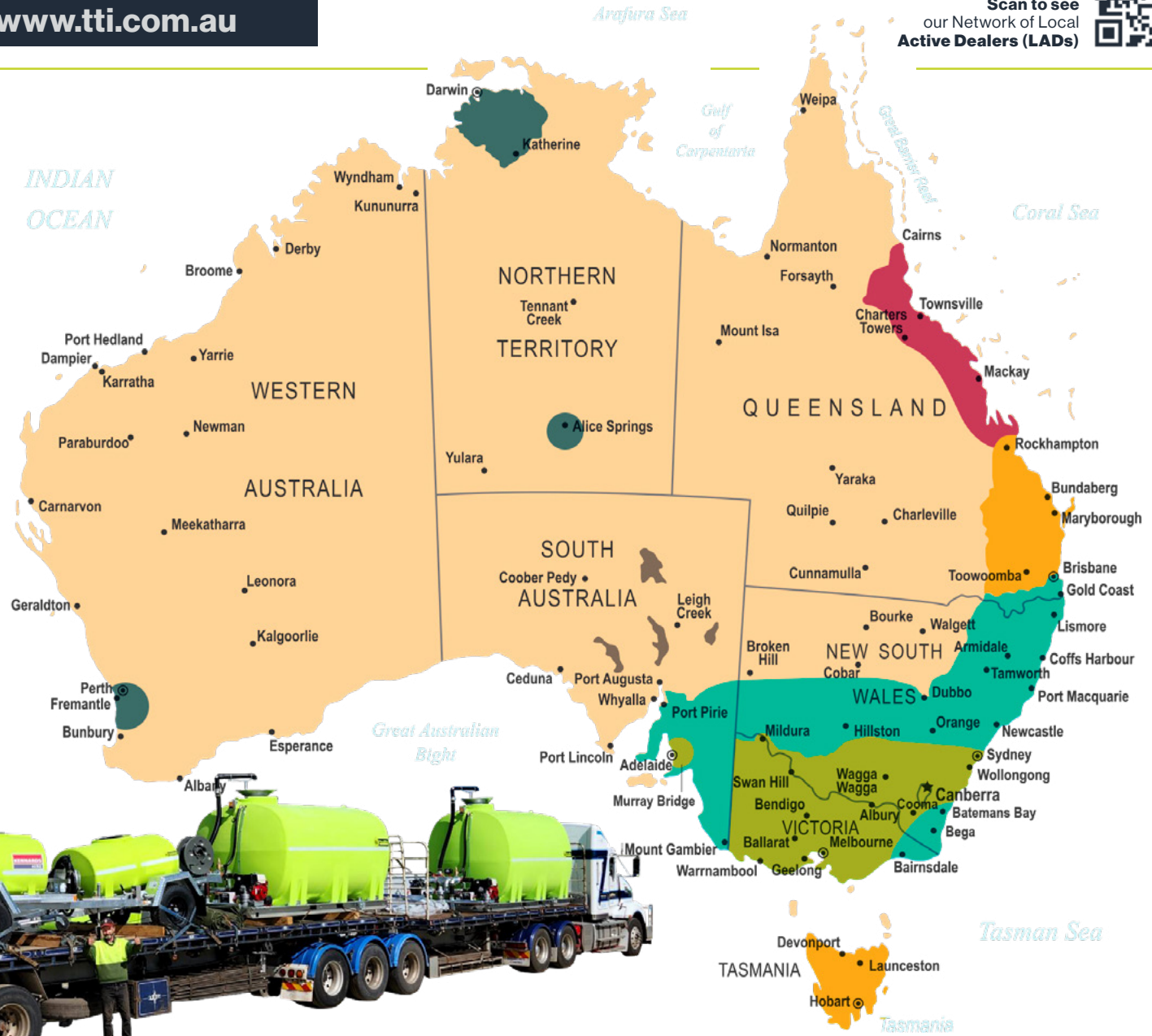
Having trouble locating your dealer?  
 Call **1800 816 277** or visit **www.tti.com.au**



Scan to see  
 our Network of Local  
**Active Dealers (LADs)**

**LEGEND:**

- Zone 1
- Zone 2
- Zone 3
- Zone 4
- Zone 5
- Zone 6



\*GST Excluded | Freight Rates Apply



**TransTank**<sup>®</sup>  
INTERNATIONAL

#### HEAD OFFICE [ NATHALIA ]

---

3 Murray Valley Hwy,  
Nathalia, VIC, 3638

#### FABRICATION [ NATHALIA ]

---

5 Nugent St,  
Nathalia, VIC, 3638

#### WATER TRUCKS [ MELBOURNE ]

---

12 Burwood Avenue,  
Sunshine North, VIC, 3020



#### QUOTES AND ENQUIRIES

# 1800 816 277

#### HEAD OFFICE

---

Head Office: **1800 816 277**  
Landline: (03) **5866 3266**  
Fax: (03) **5866 3019**

#### EMAIL

---

Sales: **sales@tti.com.au**  
Marketing: **marketing@tti.com.au**  
Operations: **operations@tti.com.au**  
Accounts Receivable: **accountsreceivable@tti.com.au**  
Accounts Payable: **accountspayable@tti.com.au**  
Support/Warranty: **support@tti.com.au**

#### ONLINE

---

www.**tti.com.au**  
www.**ttiwatertrucks.com.au**



Follow us at **#TransTankInternational**